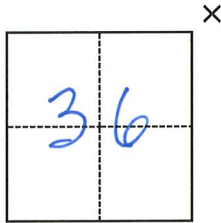


CORNER RECORD

Agency Index CR-22-219
 Document Number _____

City of Manteca County of San Joaquin, California
 Brief Legal Description Airport Way & Louise Ave at NE corner of Sec 36, T1S, R6E, M.D.B.M.



- CORNER TYPE**
- Government Corner
 - Meander
 - Rancho
 - Control
 - Property
 - Other

COORDINATES (Optional)

N. _____ E. _____
 Elevation _____
 Units Metric U.S. Survey Foot
 Horizontal Datum _____
 Zone _____ Epoch Date _____
 Vertical Datum _____
 Complies with Public Resources Code §§8801-8819
 Complies with Public Resources Code §§8890-8902

Date of Survey July 6, 2022

- PLS Act Ref.: 8765(d) 8771 8773 Other:
- Corner/Monument: Left as found Established Rebuilt Pre-Construction
 Found and tagged Reestablished Referenced Post-Construction

Narrative of corner identified and monument as found, set, reset, replaced, or removed:
 See sheet #2 for description(s):



SURVEYOR'S STATEMENT

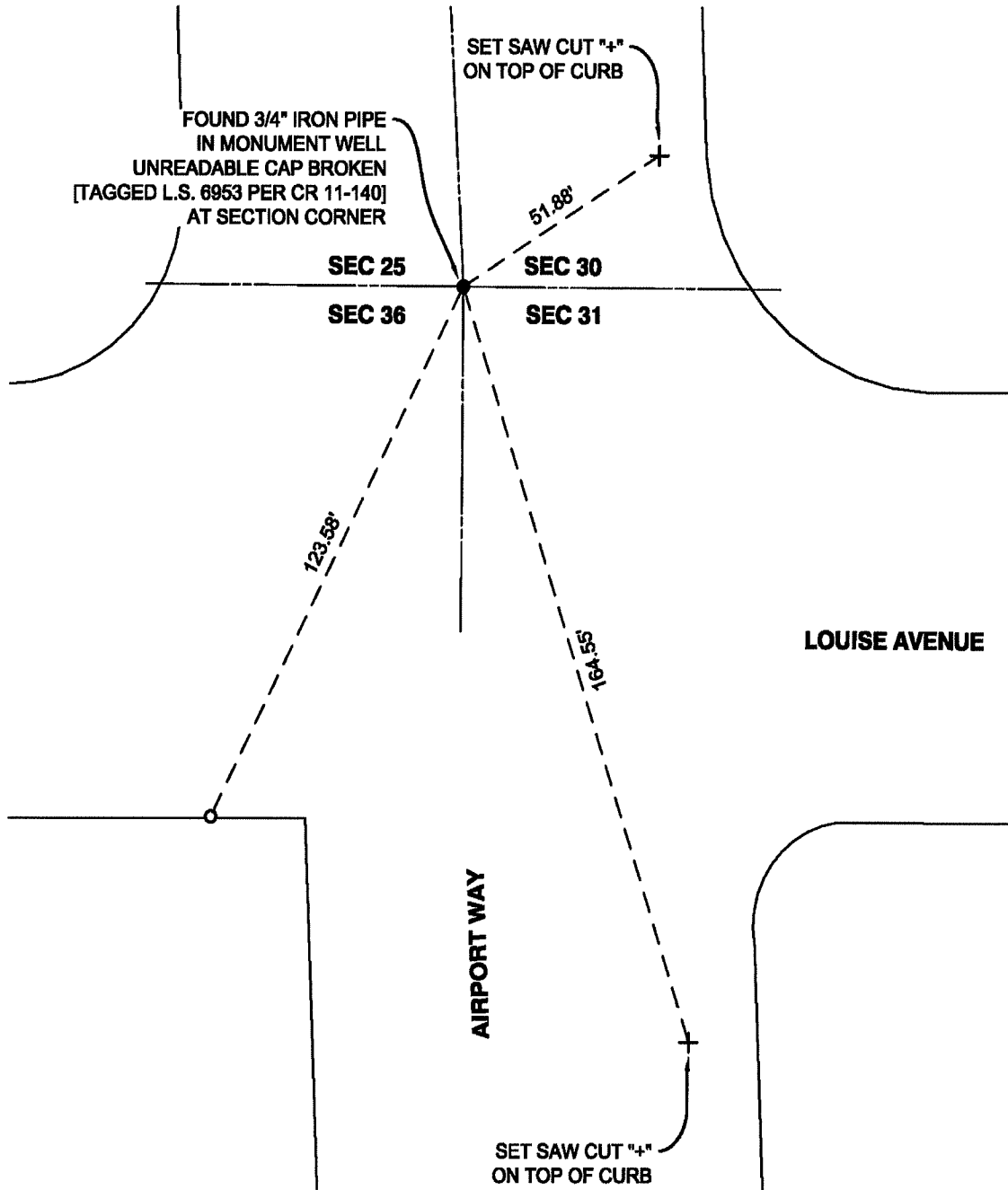
This Corner Record was prepared by me or under my direction in conformance with
 the Professional Land Surveyors' Act on July 27, 2022
 Signed Douglas F. Banks P.L.S. or R.C.E. No. 8159

COUNTY SURVEYOR'S STATEMENT

This Corner Record was received August 25, 2022
 and examined and filed September 8, 2022
 Signed James E. Hart P.L.S. or R.C.E. No. 8657
 Title County Surveyor



County Surveyor's Comment



NOTES:

- FOUND MONUMENT AS NOTED
- SET 3/4" IRON PIPE WITH PLASTIC CAP, STAMPED L.S. 8159
- ⊕ SET SAW CUT "+" AS NOTED
- CR CORNER RECORD, SAN JOAQUIN COUNTY SURVEYOR'S RECORDS



NOT TO SCALE