

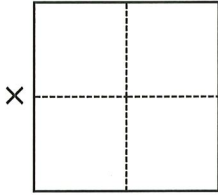
# CORNER RECORD

Agency Index CR-22-217  
Document Number \_\_\_\_\_

City of Manteca County of San Joaquin, California  
Brief Legal Description Airport Way & Wawona St at W 1/4 corner Sec 6, T2S, R7E, M.D.B.M.

### CORNER TYPE

### COORDINATES (Optional)



- Government Corner
- Meander
- Rancho
- Control
- Property
- Other

Date of Survey July 6, 2022

N. \_\_\_\_\_ E. \_\_\_\_\_  
 Elevation \_\_\_\_\_  
 Units  Metric  U.S. Survey Foot  
 Horizontal Datum \_\_\_\_\_  
 Zone \_\_\_\_\_ Epoch Date \_\_\_\_\_  
 Vertical Datum \_\_\_\_\_  
 Complies with Public Resources Code §§8801-8819  
 Complies with Public Resources Code §§8890-8902

- PLS Act Ref.:  8765(d)  8771  8773  Other: \_\_\_\_\_
- Corner/Monument:  Left as found  Established  Rebuilt  Pre-Construction  
 Found and tagged  Reestablished  Referenced  Post-Construction

Narrative of corner identified and monument as found, set, reset, replaced, or removed:  
 See sheet #2 for description(s):

### SURVEYOR'S STATEMENT

This Corner Record was prepared by me or under my direction in conformance with the Professional Land Surveyors' Act on July 27, 2022.

Signed Douglas F. Banks P.L.S. or R.C.E. No. 8159



### COUNTY SURVEYOR'S STATEMENT

This Corner Record was received August 3, 2022

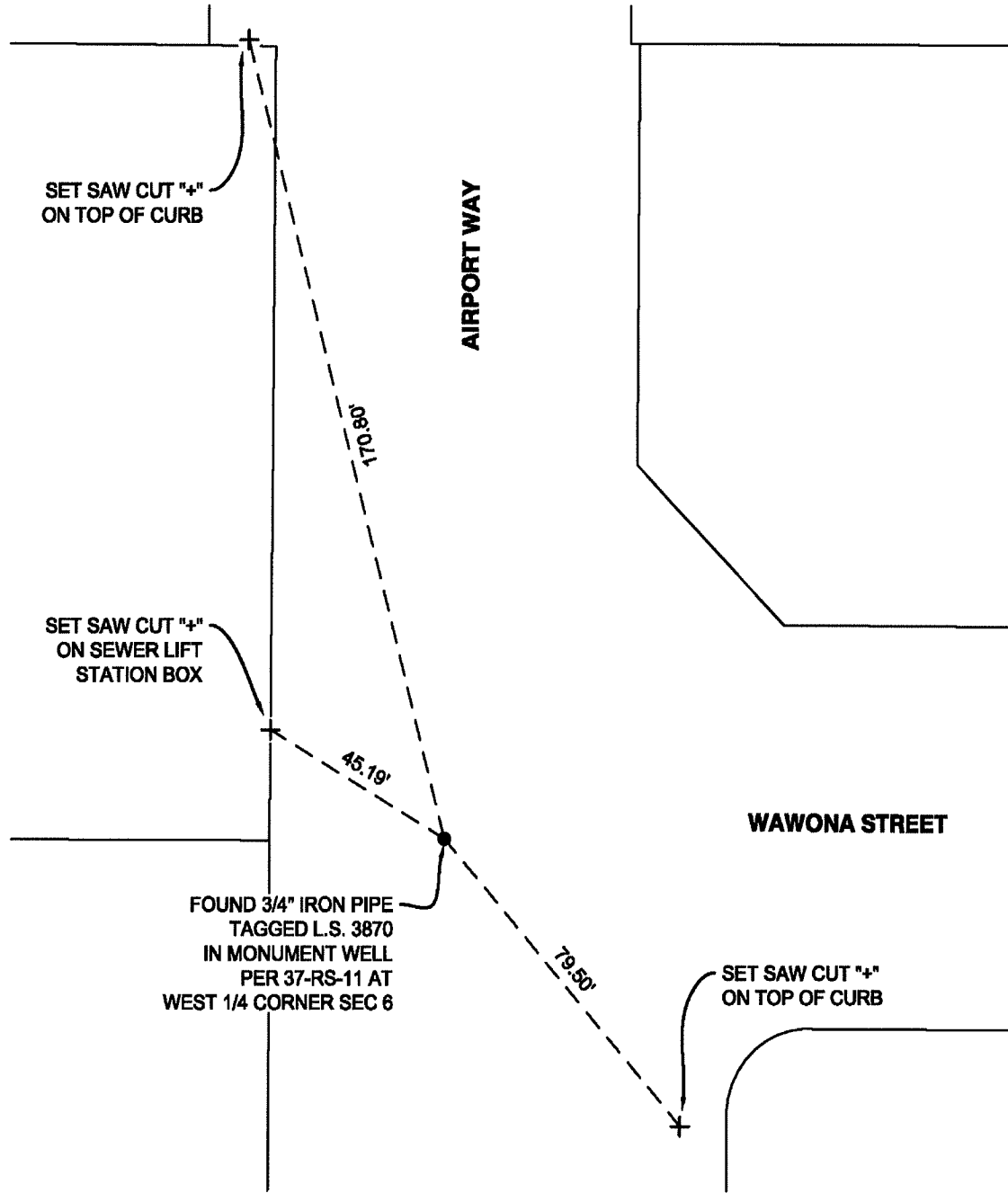
and examined and filed August 18, 2022.

Signed James E. Hart P.L.S. or R.C.E. No. 8657

Title County Surveyor

County Surveyor's Comment





NOTES:

- FOUND MONUMENT AS NOTED
- RS- SURVEYS, BOOK, PAGE, SAN JOAQUIN COUNTY RECORDS
- + SET SAW CUT "+" AS NOTED



NOT TO SCALE