

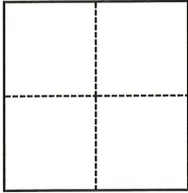
# CORNER RECORD

Agency Index CR-22-215  
Document Number \_\_\_\_\_

City of Manteca County of San Joaquin, California  
Brief Legal Description Airport Way & Peregrine St in Section 12, T2S, R6E, M.D.B.M.

### CORNER TYPE

### COORDINATES (Optional)



- Government Corner
- Meander
- Rancho
- Control
- Property
- Other

Date of Survey July 6, 2022

N. \_\_\_\_\_ E. \_\_\_\_\_  
 Elevation \_\_\_\_\_  
 Units  Metric  U.S. Survey Foot  
 Horizontal Datum \_\_\_\_\_  
 Zone \_\_\_\_\_ Epoch Date \_\_\_\_\_  
 Vertical Datum \_\_\_\_\_  
 Complies with Public Resources Code §§8801-8819  
 Complies with Public Resources Code §§8890-8902

- PLS Act Ref.:  8765(d)  8771  8773  Other:
- Corner/Monument:  Left as found  Established  Rebuilt  Pre-Construction  
 Found and tagged  Reestablished  Referenced  Post-Construction

Narrative of corner identified and monument as found, set, reset, replaced, or removed:  
 See sheet #2 for description(s):

### SURVEYOR'S STATEMENT

This Corner Record was prepared by me or under my direction in conformance with  
the Professional Land Surveyors' Act on July 27, 2022

Signed Douglas F. Banks P.L.S. or R.C.E. No. 8159



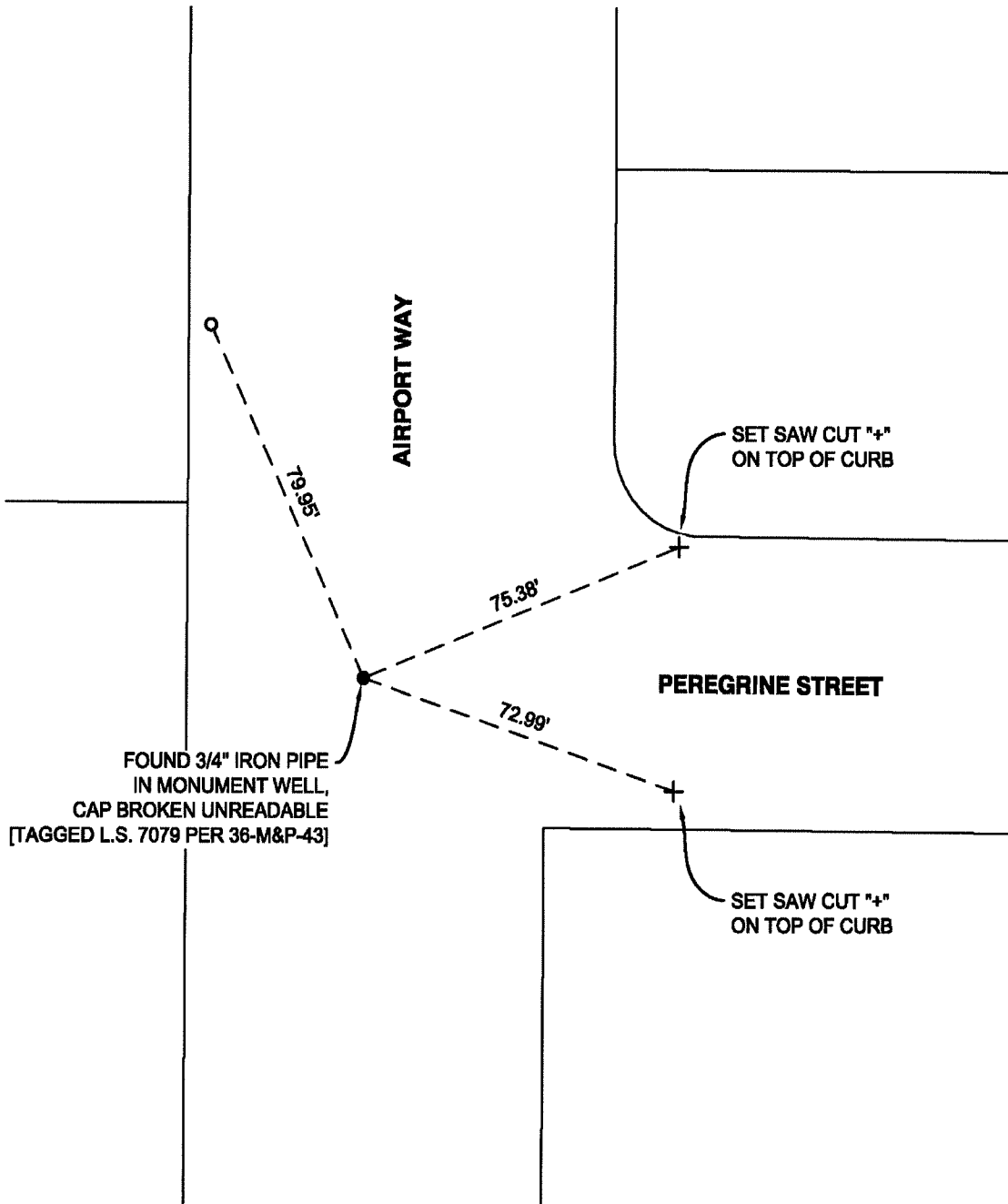
### COUNTY SURVEYOR'S STATEMENT

This Corner Record was received August 3, 2022  
and examined and filed August 18, 2022

Signed James E. Hart P.L.S. or R.C.E. No. 8657  
Title County Surveyor



County Surveyor's Comment



NOTES:

- FOUND MONUMENT AS NOTED
- SET 3/4" IRON PIPE WITH PLASTIC CAP, STAMPED L.S. 8159
- ⊕ SET SAW CUT "+" AS NOTED
- M&P- MAPS AND PLATS, BOOK, PAGE, SAN JOAQUIN COUNTY RECORDS



NOT TO SCALE