

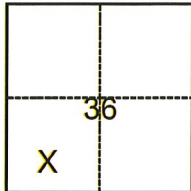
# CORNER RECORD

Agency Index CR-22-211  
Document Number \_\_\_\_\_

City of Lodi County of San Joaquin, California  
Brief Legal Description Lot 7, Tract No. 926 "Rivergate Mokelumne" Unit No. 1, M.&P. 22-27, S.J.C.R.

### CORNER TYPE

### COORDINATES (Optional)



- Government Corner     Control  
 Meander                     Property  
 Rancho                          Other

N. \_\_\_\_\_ E. \_\_\_\_\_

Elevation \_\_\_\_\_

Units  Metric  U.S. Survey Foot

Horizontal Datum \_\_\_\_\_

Zone \_\_\_\_\_ Epoch Date \_\_\_\_\_

Vertical Datum \_\_\_\_\_

Complies with Public Resources Code §§8801-8819

Complies with Public Resources Code §§8890-8902

Date of Survey April 15, 2022

T.4N., R.6E., M.D.B.&M.

PLS Act Ref.:  8765(d)     8771     8773     Other:

Corner/Monument:  Left as found     Established     Rebuilt     Pre-Construction

Found and tagged     Reestablished     Referenced     Post-Construction

Narrative of corner identified and monument as found, set, reset, replaced, or removed:

See sheet #2 for description(s):

### SURVEYOR'S STATEMENT

This Corner Record was prepared by me or under my direction in conformance with  
the Professional Land Surveyors' Act on August 2, 2022  
Signed [Signature] P.L.S. or R.C.E. No. 25835



### COUNTY SURVEYOR'S STATEMENT

This Corner Record was received August 2, 2022  
and examined and filed August 12, 2022  
Signed James E. Hart P.L.S. or R.C.E. No. 8657  
Title County Surveyor

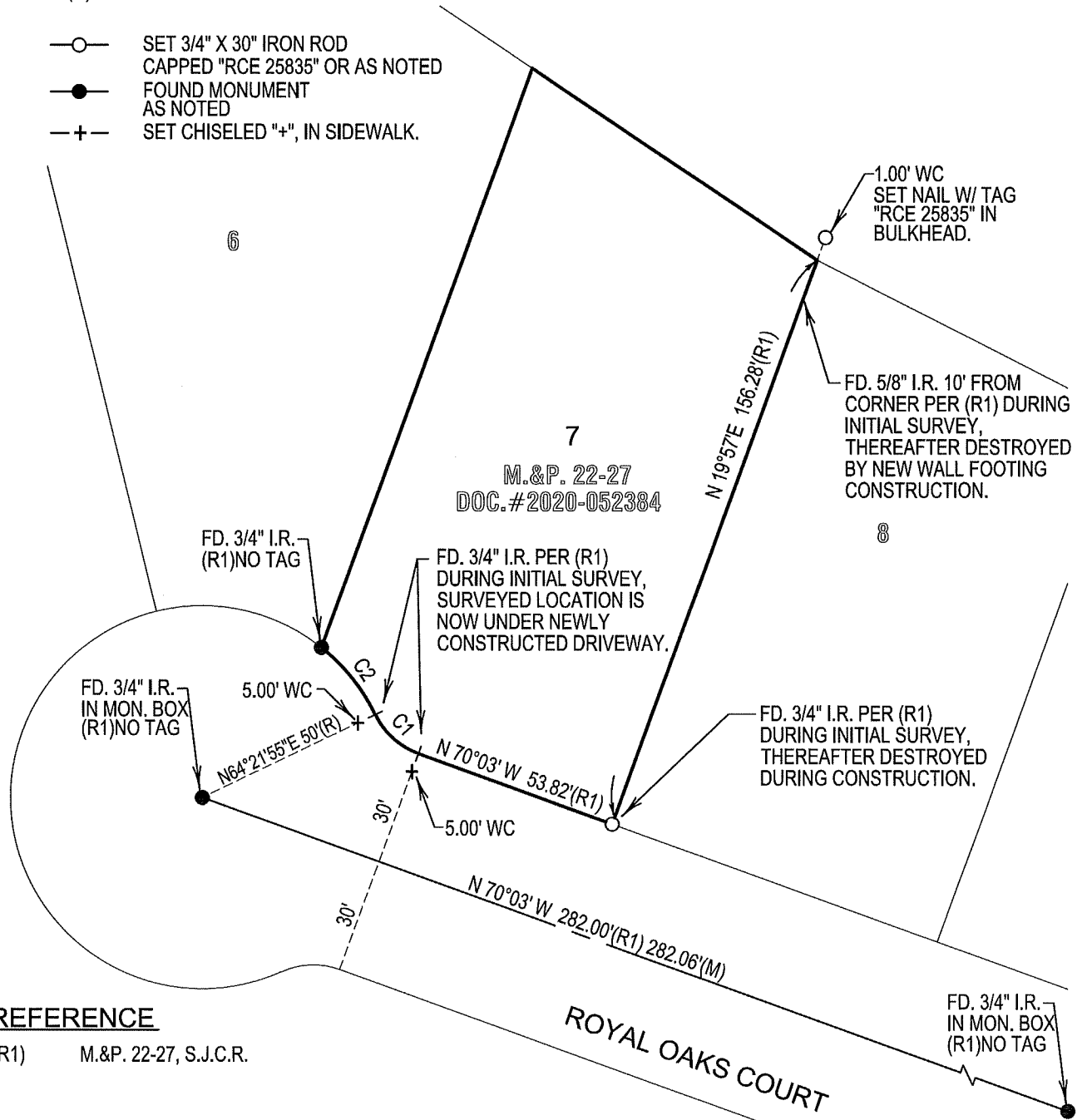
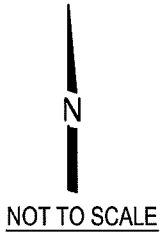


County Surveyor's Comment

**LEGEND**

- FD. FOUND
- S.J.C.R. SAN JOAQUIN COUNTY RECORDS
- M.&P. MAPS & PLATS
- (M) MEASURED
- DOC.# DOCUMENT NUMBER
- I.R. IRON ROD
- MON. MONUMENT
- WC WITNESS CORNER
- (R) RADIAL

- SET 3/4" X 30" IRON ROD  
CAPPED "RCE 25835" OR AS NOTED
- FOUND MONUMENT  
AS NOTED
- +- SET CHISELED "+", IN SIDEWALK.



**REFERENCE**

(R1) M.&P. 22-27, S.J.C.R.

CURVE TABLE				
CURVE	RADIUS	DELTA	LENGTH	CHORD
C1	20.00'	44°24'53"	15.50'	N47°50'34"W 15.12'
C2	50.00'	25°52'38"	22.58'	S38°34'26"E 22.39'