

CORNER RECORD

Agency Index CR-22-207

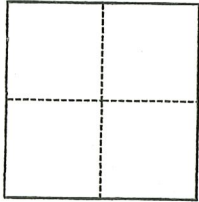
Document Number _____

City of _____ County of SAN JOAQUIN, California

Brief Legal Description LOTS 10 & 83, M.&P. 13-124, TRACT NO. 308, RIVIERA CLIFFS

CORNER TYPE

COORDINATES (Optional)



- Government Corner
- Meander
- Rancho
- Control
- Property
- Other

Date of Survey May 23, 2022

N. _____ E. _____

Elevation _____

Units Metric U.S. Survey Foot

Horizontal Datum _____

Zone _____ Epoch Date _____

Vertical Datum _____

Complies with Public Resources Code §§8801-8819

Complies with Public Resources Code §§8890-8902

PLS Act Ref.: 8765(d) 8771 8773 Other: _____

Corner/Monument: Left as found Established Rebuilt Pre-Construction

Found and tagged Reestablished Referenced Post-Construction

Narrative of corner identified and monument as found, set, reset, replaced, or removed:

See sheet #2 for description(s):

SEE PAGE 2 OF 2 FOR EXHIBIT MAP SHOWING MONUMENTS FOUND AND SET

SURVEYOR'S STATEMENT

This Corner Record was prepared by me or under my direction in conformance with the Professional Land Surveyors' Act on 07/27/2022

Signed Walter John Shoup P.L.S. or R.C.E. No. L-7736



COUNTY SURVEYOR'S STATEMENT

This Corner Record was received July 27, 2022

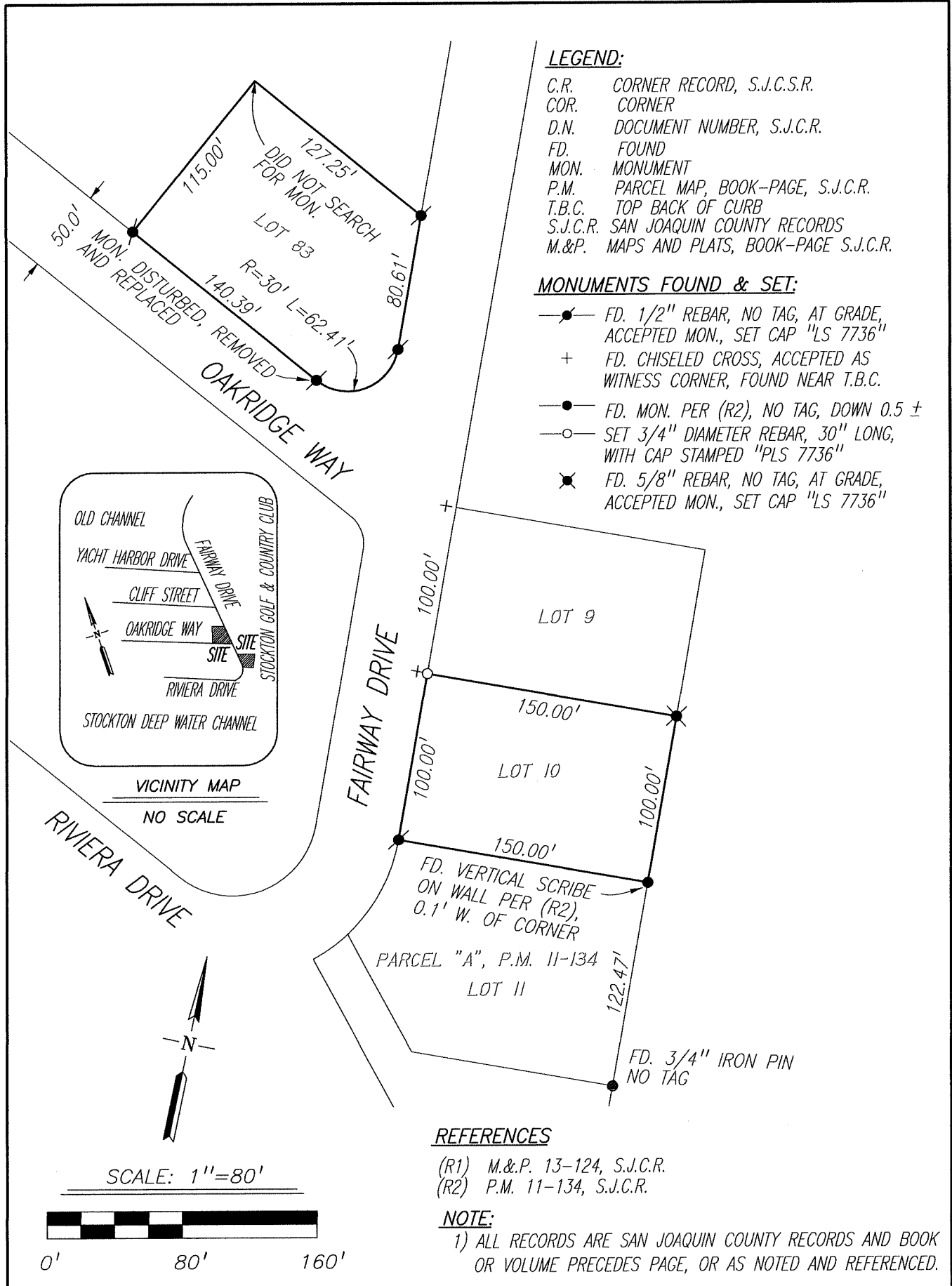
and examined and filed August 11, 2022

Signed James E. Hart P.L.S. or R.C.E. No. 8657

Title County Surveyor

County Surveyor's Comment _____



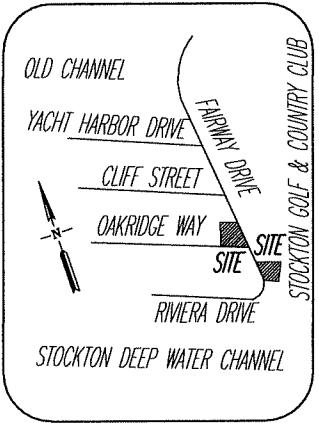


LEGEND:

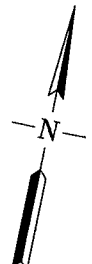
- C.R. CORNER RECORD, S.J.C.S.R.
- COR. CORNER
- D.N. DOCUMENT NUMBER, S.J.C.R.
- FD. FOUND
- MON. MONUMENT
- P.M. PARCEL MAP, BOOK-PAGE, S.J.C.R.
- T.B.C. TOP BACK OF CURB
- S.J.C.R. SAN JOAQUIN COUNTY RECORDS
- M.&P. MAPS AND PLATS, BOOK-PAGE S.J.C.R.

MONUMENTS FOUND & SET:

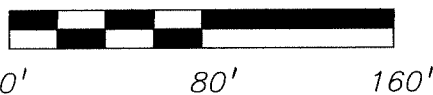
- FD. 1/2" REBAR, NO TAG, AT GRADE, ACCEPTED MON., SET CAP "LS 7736"
- + FD. CHISELED CROSS, ACCEPTED AS WITNESS CORNER, FOUND NEAR T.B.C.
- FD. MON. PER (R2), NO TAG, DOWN 0.5 ±
- SET 3/4" DIAMETER REBAR, 30" LONG, WITH CAP STAMPED "PLS 7736"
- ✱ FD. 5/8" REBAR, NO TAG, AT GRADE, ACCEPTED MON., SET CAP "LS 7736"



VICINITY MAP
NO SCALE



SCALE: 1"=80'



REFERENCES

- (R1) M.&P. 13-124, S.J.C.R.
- (R2) P.M. 11-134, S.J.C.R.

NOTE:

1) ALL RECORDS ARE SAN JOAQUIN COUNTY RECORDS AND BOOK OR VOLUME PRECEDES PAGE, OR AS NOTED AND REFERENCED.

Scale: 1"=80'	SHOUP LAND SURVEYING CLIENT: DARREN OVERTON	Date: 07/07/2022
Job No.: 22-015		DWG: 22015.DWG