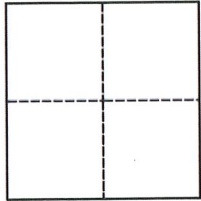


CORNER RECORD

Agency Index CR-22-206
Document Number _____

City of STOCKTON County of SAN JOAQUIN, California
Brief Legal Description 204 FEET SOUTH OF ZEPHYR STREET AND S AIRPORT WAY INTERSECTION



CORNER TYPE

- Government Corner Control
- Meander Property
- Rancho Other

Date of Survey 05/10/2022

COORDINATES (Optional)

- N. _____ E. _____
 Elevation _____
 Units Metric U.S. Survey Foot
 Horizontal Datum _____
 Zone _____ Epoch Date _____
 Vertical Datum _____
 Complies with Public Resources Code §§8801-8819
 Complies with Public Resources Code §§8890-8902

- PLS Act Ref.: 8765(d) 8771 8773 Other:
 Corner/Monument: Left as found Established Rebuilt Pre-Construction
 Found and tagged Reestablished Referenced Post-Construction

Narrative of corner identified and monument as found, set, reset, replaced, or removed:

See sheet #2 for description(s):

FOUND 3/4 INCH IRON PIN SIX(6) INCHES DOWN IN THE GROUND APPROXIMATELY 204 FEET SOUTH OF ZEPHYR STREET AND S AIRPORT WAY INTERSECTION. SET TWO(2) CUT "X" REFERENCES AND A TIE TO THE MONUMENT APPROXIMATELY 88 FEET SOUTH OF THE ZEPHYR STREET AND S AIRPORT WAY INTERSECTION SHOWN ON SHEET 2.

SURVEYOR'S STATEMENT

This Corner Record was prepared by me or under my direction in conformance with the Professional Land Surveyors' Act on JUNE 8, 2022

Signed *James N. Landrum* P.L.S. or R.C.E. No. LS 5837



COUNTY SURVEYOR'S STATEMENT

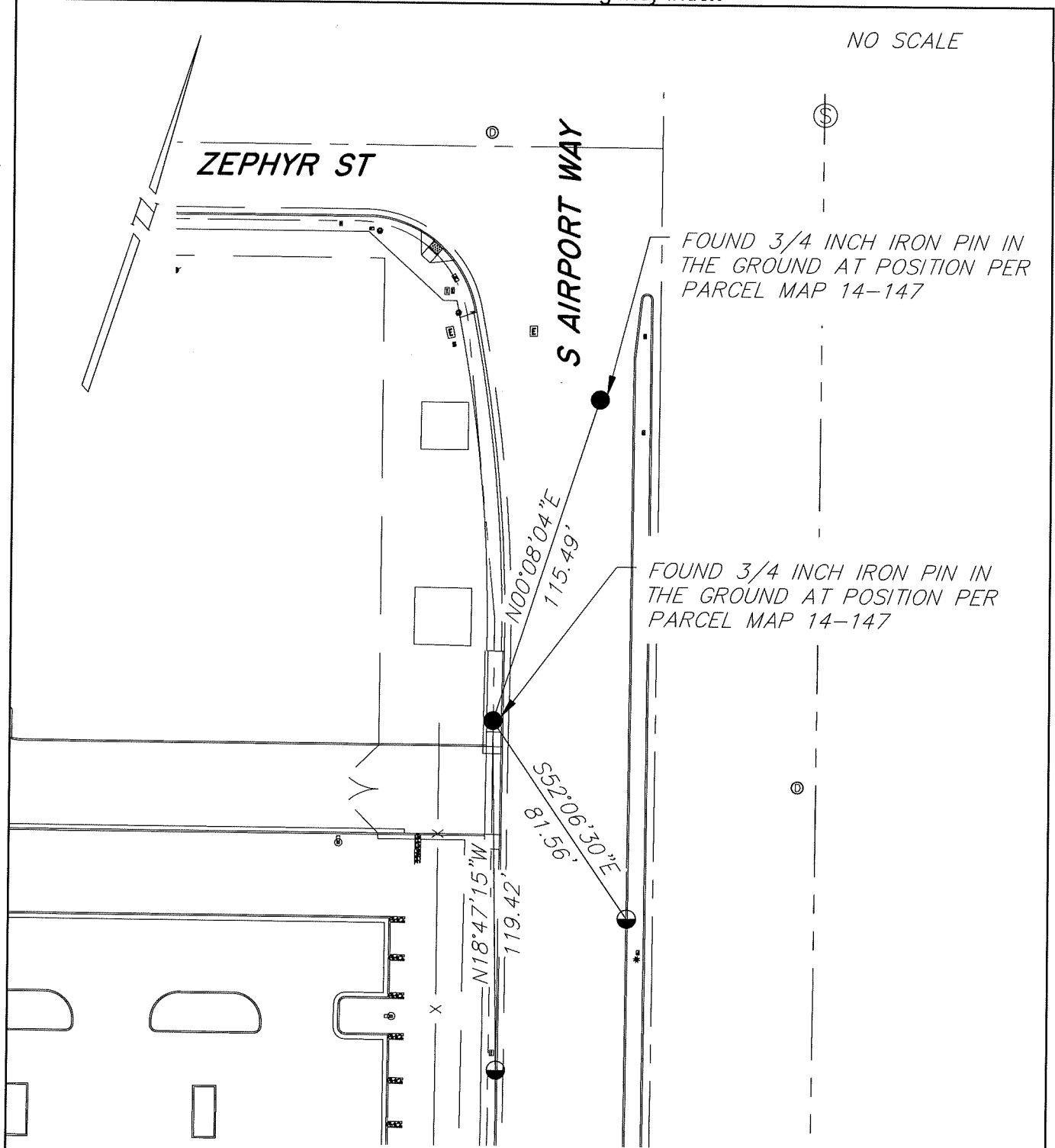
This Corner Record was received July 15, 2022 and examined and filed August 2, 2022

Signed *James E. Hart* P.L.S. or R.C.E. No. 8657
Title County Surveyor

County Surveyor's Comment



NO SCALE



LEGEND

- FOUND MONUMENT
- ⊖ SET CUT "X" UNLESS OTHERWISE SHOWN
- Ⓢ SANITARY SEWER MANHOLE
- ⊙ STORM DRAINAGE MANHOLE

NOTES

1. NOTE THAT BEARINGS SHOWN ARE FOR ANGULAR CONTROL FROM LOCAL CONSTRUCTION SURVEY DATA.