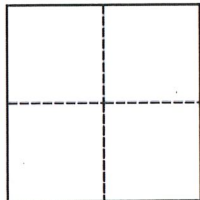


CORNER RECORD

Agency Index CR-22-204
Document Number _____

City of STOCKTON County of SAN JOAQUIN, California
Brief Legal Description 20 FEET WEST OF ZEPHYR STREET AND S AIRPORT WAY INTERSECTION



CORNER TYPE

Government Corner Control
Meander Property
Rancho Other

Date of Survey 05/10/2022

COORDINATES (Optional)

N. _____ E. _____
Elevation _____
Units Metric U.S. Survey Foot
Horizontal Datum _____
Zone _____ Epoch Date _____
Vertical Datum _____
 Complies with Public Resources Code §§8801-8819
 Complies with Public Resources Code §§8890-8902

PLS Act Ref.: 8765(d) 8771 8773 Other:
Corner/Monument: Left as found Established Rebuilt Pre-Construction
 Found and tagged Reestablished Referenced Post-Construction

Narrative of corner identified and monument as found, set, reset, replaced, or removed:
 See sheet #2 for description(s):

FOUND 3/4 INCH IRON PIN IN MONUMENT WELL APPROXIMATELY 20 FEET WEST OF ZEPHYR STREET AND S AIRPORT WAY INTERSECTION. SET TWO(2) CUT "X" REFERENCES AND A TIE TO THE MONUMENT SOUTH OF THE ZEPHYR STREET AND S AIRPORT WAY INTERSECTION AS SHOWN ON SHEET 2.

SURVEYOR'S STATEMENT

This Corner Record was prepared by me or under my direction in conformance with the Professional Land Surveyors' Act on JUNE 8, 2022.
Signed *James N. Landrum* P.L.S. or R.C.E. No. LS 5837



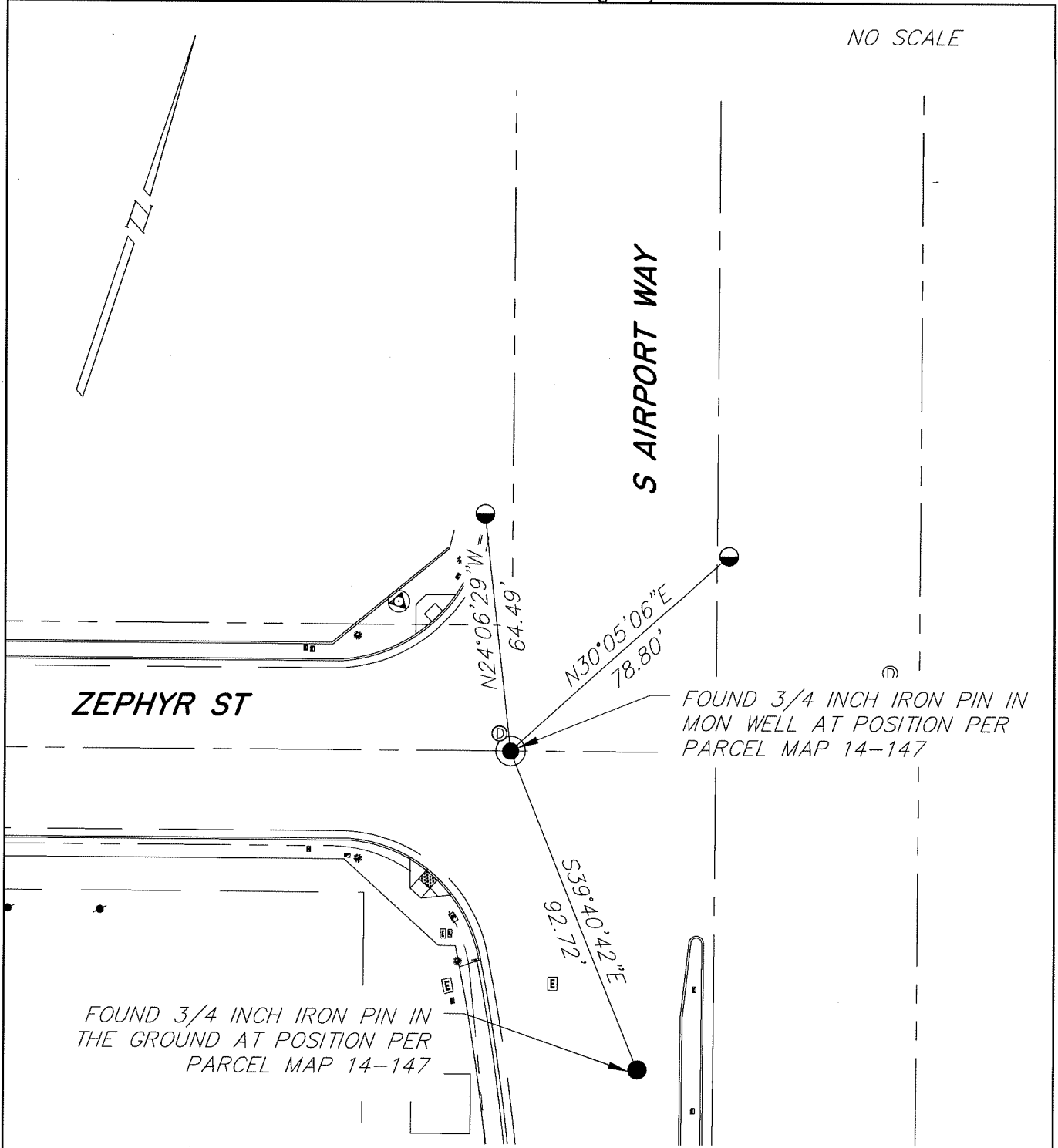
COUNTY SURVEYOR'S STATEMENT

This Corner Record was received July 15, 2022
and examined and filed August 2, 2022.
Signed *James E. Hart* P.L.S. or R.C.E. No. 8657
Title County Surveyor



County Surveyor's Comment _____

NO SCALE



ZEPHYR ST

S AIRPORT WAY

FOUND 3/4 INCH IRON PIN IN THE GROUND AT POSITION PER PARCEL MAP 14-147

FOUND 3/4 INCH IRON PIN IN MON WELL AT POSITION PER PARCEL MAP 14-147

LEGEND

- FOUND MONUMENT IN MON WELL
- FOUND MONUMENT
- SET CUT "X" UNLESS OTHERWISE SHOWN
- Ⓢ SANITARY SEWER MANHOLE
- Ⓣ STORM DRAINAGE MANHOLE

NOTES

1. NOTE THAT BEARINGS SHOWN ARE FOR ANGULAR CONTROL FROM LOCAL CONSTRUCTION SURVEY DATA.