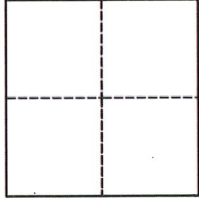


CORNER RECORD

Agency Index CR-22-203
Document Number _____

City of STOCKTON County of SAN JOAQUIN, California

Brief Legal Description 198 FEET SOUTHWEST OF ZEPHYR STREET AND ZEPHYR COURT INTERSECTION



CORNER TYPE

Government Corner Control
Meander Property
Rancho Other

Date of Survey 05/10/2022

COORDINATES (Optional)

N. _____ E. _____

Elevation _____

Units Metric U.S. Survey Foot

Horizontal Datum _____

Zone _____ Epoch Date _____

Vertical Datum _____

Complies with Public Resources Code §§8801-8819
 Complies with Public Resources Code §§8890-8902

PLS Act Ref.: 8765(d) 8771 8773 Other:

Corner/Monument: Left as found Established Rebuilt Pre-Construction
 Found and tagged Reestablished Referenced Post-Construction

Narrative of corner identified and monument as found, set, reset, replaced, or removed:

See sheet #2 for description(s):

FOUND 3/4 INCH IRON PIN TWO(2) INCHES DOWN IN THE GROUND APPROXIMATELY 198 FEET SOUTHWEST OF ZEPHYR STREET AND ZEPHYR COURT INTERSECTION. SET FOUR(4) CUT "X" REFERENCES AS SHOWN ON SHEET 2.

SURVEYOR'S STATEMENT

This Corner Record was prepared by me or under my direction in conformance with

the Professional Land Surveyors' Act on JUNE 8, 2022

Signed James N. Landrum P.L.S. or R.C.E. No. LS 5837



COUNTY SURVEYOR'S STATEMENT

This Corner Record was received July 15, 2022

and examined and filed August 2, 2022

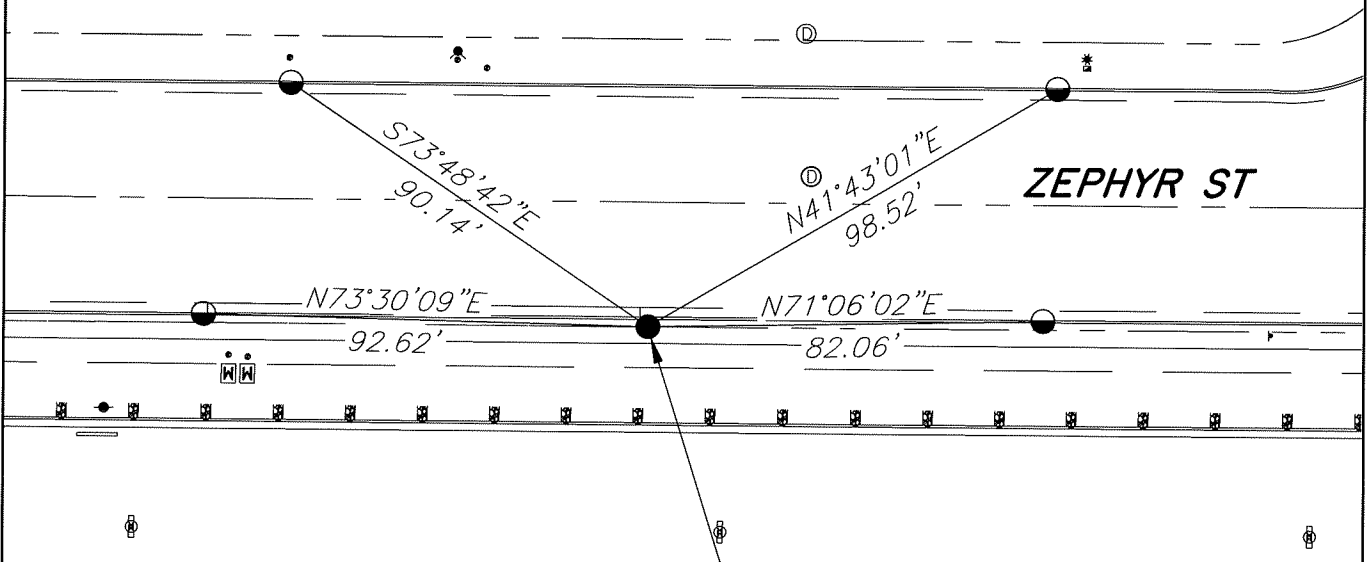
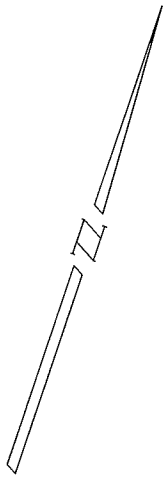
Signed James E. Hart P.L.S. or R.C.E. No. 8657

Title County Surveyor

County Surveyor's Comment



NO SCALE



FOUND 3/4 INCH IRON PIN AT
POSITION PER PARCEL MAP
14-147

LEGEND

- FOUND MONUMENT
- SET CUT "X" UNLESS OTHERWISE SHOWN

NOTES

1. NOTE THAT BEARINGS SHOWN ARE FOR ANGULAR CONTROL FROM LOCAL CONSTRUCTION SURVEY DATA.