

# CORNER RECORD

Agency Index CR-22-202  
Document Number \_\_\_\_\_

City of STOCKTON County of SAN JOAQUIN, California

Brief Legal Description 761 FEET SOUTHWEST OF ZEPHYR STREET AND ZEPHYR COURT INTERSECTION



### CORNER TYPE

Government Corner  Control   
Meander  Property   
Rancho  Other

Date of Survey 05/10/2022

### COORDINATES (Optional)

N. \_\_\_\_\_ E. \_\_\_\_\_

Elevation \_\_\_\_\_

Units Metric  U.S. Survey Foot

Horizontal Datum \_\_\_\_\_

Zone \_\_\_\_\_ Epoch Date \_\_\_\_\_

Vertical Datum \_\_\_\_\_

Complies with Public Resources Code §§8801-8819

Complies with Public Resources Code §§8890-8902

PLS Act Ref.:  8765(d)  8771  8773  Other:

Corner/Monument:  Left as found  Established  Rebuilt  Pre-Construction

Found and tagged  Reestablished  Referenced  Post-Construction

Narrative of corner identified and monument as found, set, reset, replaced, or removed:

See sheet #2 for description(s):

*FOUND 3/4 INCH IRON PIN SIX(6) INCHES DOWN IN THE GROUND APPROXIMATELY 761 FEET SOUTHWEST OF ZEPHYR STREET AND ZEPHYR COURT INTERSECTION. SET FOUR(4) CUT "X" REFERENCES AS SHOWN ON SHEET 2.*

### SURVEYOR'S STATEMENT

This Corner Record was prepared by me or under my direction in conformance with

the Professional Land Surveyors' Act on JUNE 8, 2022

Signed *James N. Landrum* P.L.S. or R.C.E. No. LS 5837



### COUNTY SURVEYOR'S STATEMENT

This Corner Record was received July 15, 2022

and examined and filed August 2, 2022

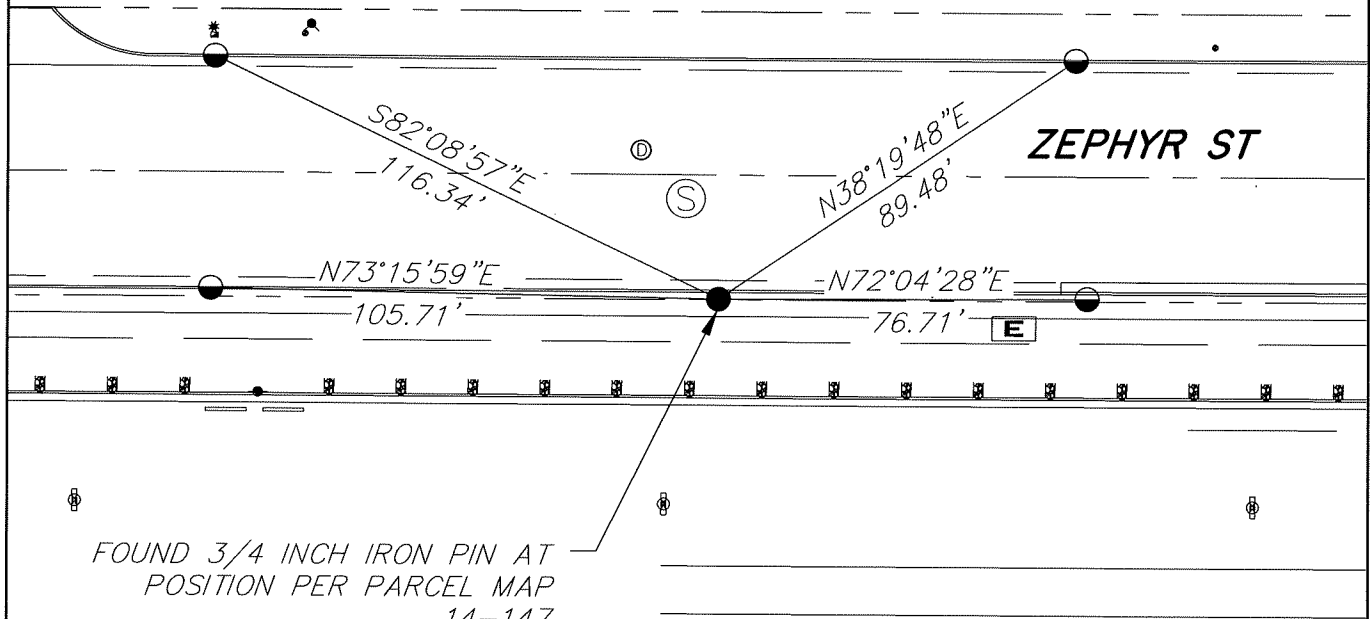
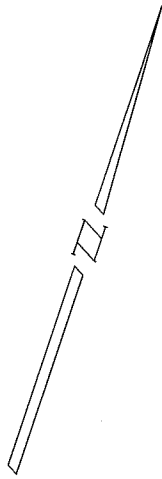
Signed *James E. Hart* P.L.S. or R.C.E. No. 8657

Title County Surveyor

County Surveyor's Comment



NO SCALE



**LEGEND**

- FOUND MONUMENT
- SET CUT "X" UNLESS OTHERWISE SHOWN
- Ⓢ SANITARY SEWER MANHOLE
- Ⓣ STORM DRAINAGE MANHOLE

**NOTES**

1. NOTE THAT BEARINGS SHOWN ARE FOR ANGULAR CONTROL FROM LOCAL CONSTRUCTION SURVEY DATA.