

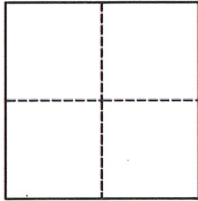
CORNER RECORD

Agency Index CR-22-201

Document Number _____

City of STOCKTON County of SAN JOAQUIN, California

Brief Legal Description AT ZEPHYR STREET AND PERLMAN DRIVE INTERSECTION



CORNER TYPE

- Government Corner Control
- Meander Property
- Rancho Other

Date of Survey 05/10/2022

COORDINATES (Optional)

N. _____ E. _____

Elevation _____

Units Metric U.S. Survey Foot

Horizontal Datum _____

Zone _____ Epoch Date _____

Vertical Datum _____

Complies with Public Resources Code §§8801-8819

Complies with Public Resources Code §§8890-8902

PLS Act Ref.: 8765(d) 8771 8773 Other:

Corner/Monument: Left as found Established Rebuilt Pre-Construction

Found and tagged Reestablished Referenced Post-Construction

Narrative of corner identified and monument as found, set, reset, replaced, or removed:

See sheet #2 for description(s):

FOUND 3/4 INCH IRON PIN IN MONUMENT WELL AT ZEPHYR STREET AND PERLMAN DRIVE INTERSECTION. SET FOUR(4) CUT "X" REFERENCES AS SHOWN ON SHEET 2.

SURVEYOR'S STATEMENT

This Corner Record was prepared by me or under my direction in conformance with

the Professional Land Surveyors' Act on JUNE 8, 2022

Signed *James N. Landrum* P.L.S. or R.C.E. No. LS 5837



COUNTY SURVEYOR'S STATEMENT

This Corner Record was received July 15, 2022

and examined and filed August 2, 2022

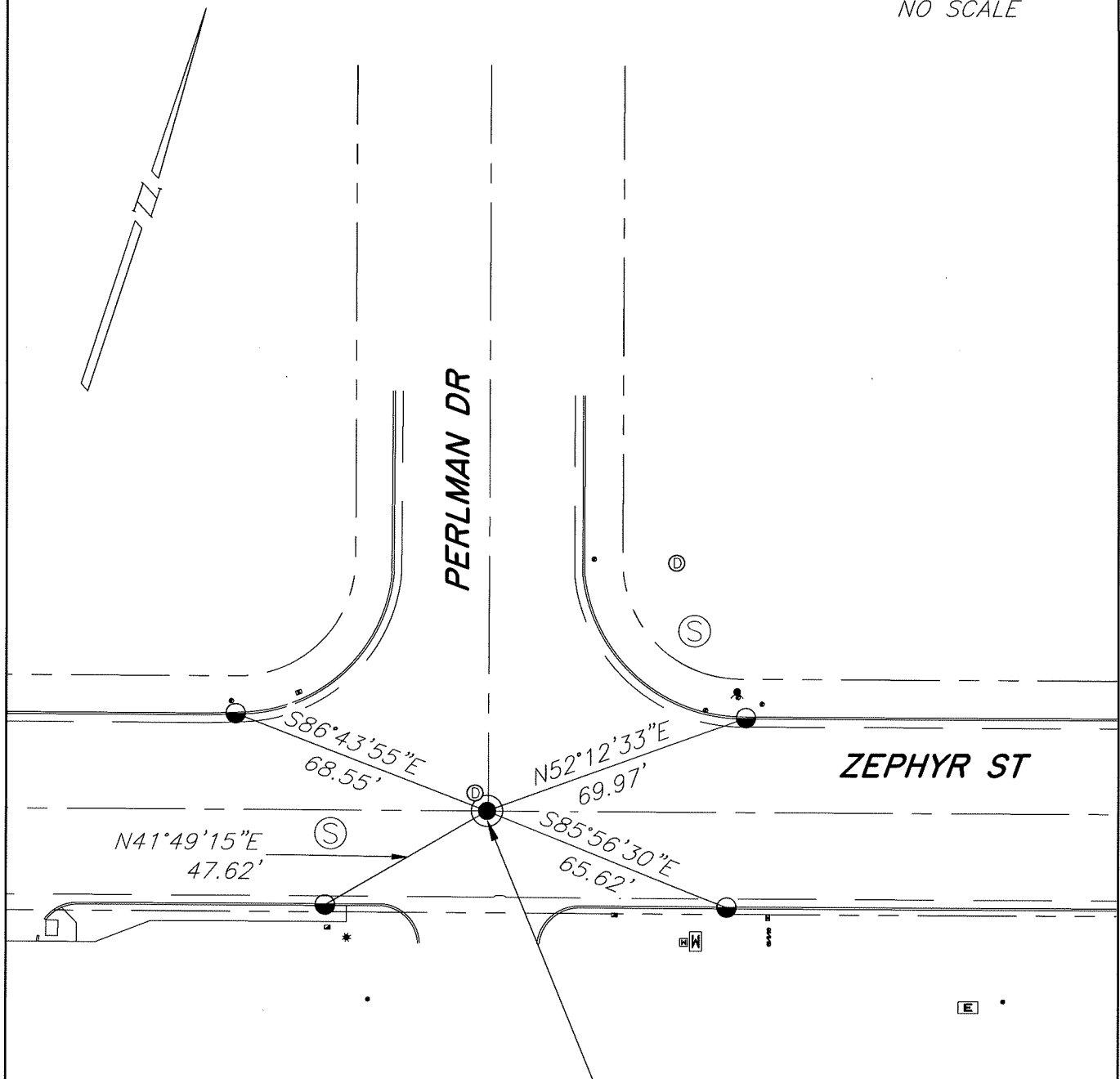
Signed *James E. Hart* P.L.S. or R.C.E. No. 8657

Title County Surveyor

County Surveyor's Comment



NO SCALE



FOUND 3/4 INCH IRON PIN IN
MON WELL AT POSITION PER
PARCEL MAP 14-144A

LEGEND

- FOUND MONUMENT IN MON WELL
- SET CUT "X" UNLESS OTHERWISE SHOWN
- Ⓢ SANITARY SEWER MANHOLE
- Ⓣ STORM DRAINAGE MANHOLE

NOTES

1. NOTE THAT BEARINGS SHOWN ARE FOR ANGULAR CONTROL FROM LOCAL CONSTRUCTION SURVEY DATA.