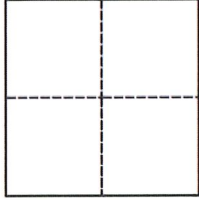


CORNER RECORD

Agency Index CR-22-200

Document Number _____

City of STOCKTON County of SAN JOAQUIN, CaliforniaBrief Legal Description AT END OF THE CURVE 832 FEET WEST OF ZEPHYR STREET AND PERLMAN DRIVE INTERSECTION**CORNER TYPE**Government Corner Control
Meander Property
Rancho OtherDate of Survey 05/10/2022**COORDINATES (Optional)**

N. _____ E. _____

Elevation _____

Units Metric U.S. Survey Foot Horizontal Datum _____

Zone _____ Epoch Date _____

Vertical Datum _____

 Complies with Public Resources Code §§8801-8819
 Complies with Public Resources Code §§8890-8902PLS Act Ref.: 8765(d) 8771 8773 Other:Corner/
Monument: Left as found Established Rebuilt Pre-Construction
 Found and tagged Reestablished Referenced Post-Construction

Narrative of corner identified and monument as found, set, reset, replaced, or removed:

 See sheet #2 for description(s):

FOUND 3/4 INCH IRON PIN IN MONUMENT WELL APPROXIMATELY 832 FEET WEST OF ZEPHYR STREET AND PERLMAN DRIVE INTERSECTION. SET TWO(2) CUT "X" REFERENCES AND A TIE TO THE BEGINNING OF CURVE MONUMENT AS SHOWN ON SHEET 2.

SURVEYOR'S STATEMENT

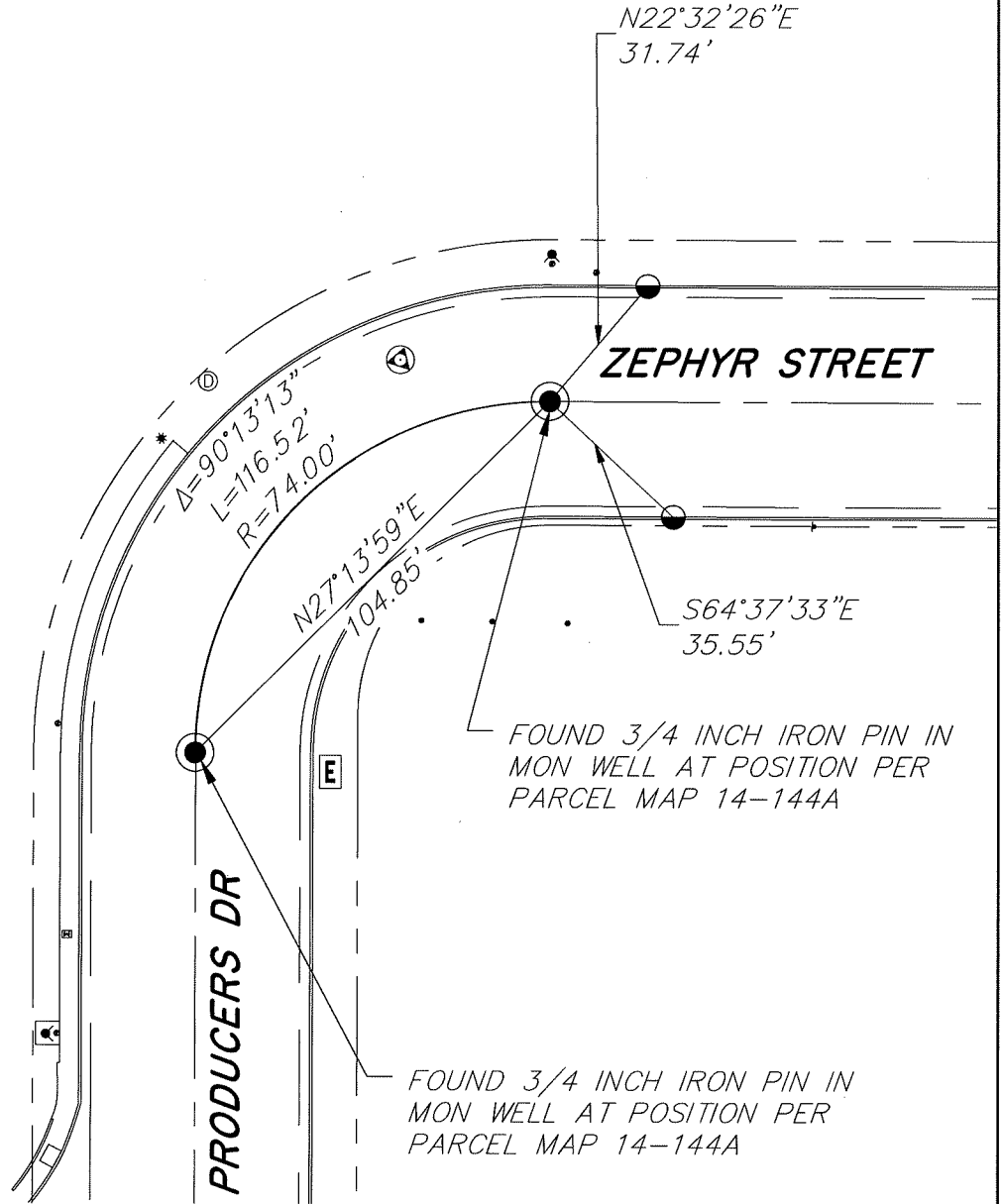
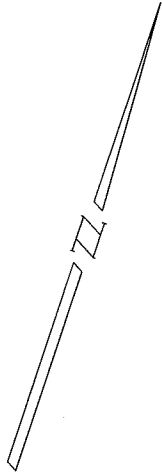
This Corner Record was prepared by me or under my direction in conformance with

the Professional Land Surveyors' Act on JUNE 8, 2022Signed James N. Landrum P.L.S. or R.C.E. No. LS 5837**COUNTY SURVEYOR'S STATEMENT**This Corner Record was received July 15, 2022and examined and filed August 2, 2022Signed James E. Hart P.L.S. or R.C.E. No. 8657Title County Surveyor

County Surveyor's Comment



NO SCALE



LEGEND

- FOUND MONUMENT IN MON WELL
- SET CUT "X" UNLESS OTHERWISE SHOWN

NOTES

1. NOTE THAT BEARINGS SHOWN ARE FOR ANGULAR CONTROL FROM LOCAL CONSTRUCTION SURVEY DATA.