

# CORNER RECORD

Agency Index CR-22-199

Document Number \_\_\_\_\_

City of STOCKTON County of SAN JOAQUIN, CaliforniaBrief Legal Description AT BEGINNING OF THE CURVE 1142 FEET NORTH OF PRODUCERS DRIVE AND INDUSTRIAL DRIVE INTERSECTION**CORNER TYPE**Government Corner  Control  
Meander  Property  
Rancho  OtherDate of Survey 05/10/2022**COORDINATES (Optional)**

N. \_\_\_\_\_ E. \_\_\_\_\_

Elevation \_\_\_\_\_

Units Metric  U.S. Survey Foot  Horizontal Datum \_\_\_\_\_

Zone \_\_\_\_\_ Epoch Date \_\_\_\_\_

Vertical Datum \_\_\_\_\_

 Complies with Public Resources Code §§8801-8819  
 Complies with Public Resources Code §§8890-8902PLS Act Ref.:  8765(d)  8771  8773  Other:Corner/  
Monument:  Left as found  Established  Rebuilt  Pre-Construction  
 Found and tagged  Reestablished  Referenced  Post-Construction

Narrative of corner identified and monument as found, set, reset, replaced, or removed:

 See sheet #2 for description(s):

FOUND 3/4 INCH IRON PIN IN MONUMENT WELL APPROXIMATELY 1142 FEET NORTH OF PRODUCERS DRIVE AND INDUSTRIAL DRIVE INTERSECTION. SET TWO(2) CUT "X" REFERENCES AND A TIE TO THE END OF CURVE MONUMENT AS SHOWN ON SHEET 2.

**SURVEYOR'S STATEMENT**

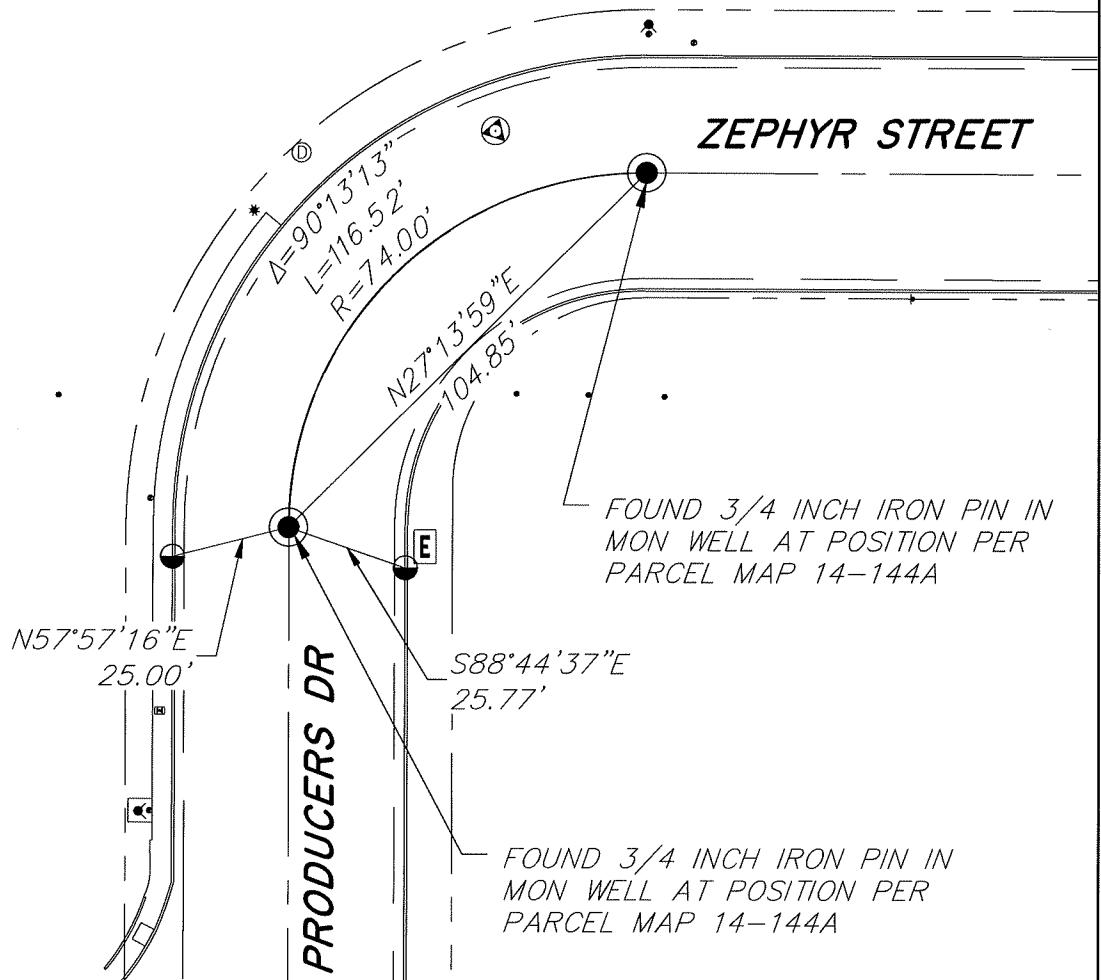
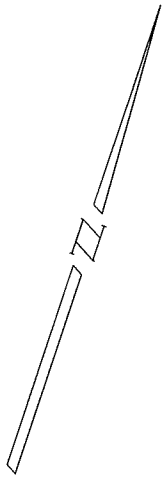
This Corner Record was prepared by me or under my direction in conformance with

the Professional Land Surveyors' Act on JUNE 8, 2022Signed James N. Landrum P.L.S. or R.C.E. No. LS 5837**COUNTY SURVEYOR'S STATEMENT**This Corner Record was received July 15, 2022and examined and filed August 2, 2022Signed James E. Hart P.L.S. or R.C.E. No. 8657Title County Surveyor

County Surveyor's Comment



NO SCALE



FOUND 3/4 INCH IRON PIN IN  
MON WELL AT POSITION PER  
PARCEL MAP 14-144A

FOUND 3/4 INCH IRON PIN IN  
MON WELL AT POSITION PER  
PARCEL MAP 14-144A

**LEGEND**

- FOUND MONUMENT IN MON WELL
- SET CUT "X" UNLESS OTHERWISE SHOWN

**NOTES**

1. NOTE THAT BEARINGS SHOWN ARE FOR ANGULAR CONTROL FROM LOCAL CONSTRUCTION SURVEY DATA.