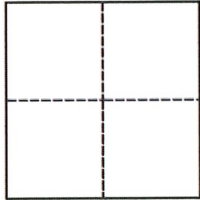


# CORNER RECORD

Agency Index CR-22-198

Document Number \_\_\_\_\_

City of STOCKTON County of SAN JOAQUIN, CaliforniaBrief Legal Description 144' NORTH OF PRODUCERS DRIVE AND INDUSTRIAL DRIVE INTERSECTION**CORNER TYPE**Government Corner  Control  
Meander  Property  
Rancho  OtherDate of Survey 05/10/2022**COORDINATES (Optional)**

N. \_\_\_\_\_ E. \_\_\_\_\_

Elevation \_\_\_\_\_

Units Metric  U.S. Survey Foot  Horizontal Datum \_\_\_\_\_

Zone \_\_\_\_\_ Epoch Date \_\_\_\_\_

Vertical Datum \_\_\_\_\_

 Complies with Public Resources Code §§8801-8819 Complies with Public Resources Code §§8890-8902PLS Act Ref.:  8765(d)  8771  8773  Other:Corner/Monument:  Left as found  Established  Rebuilt  Pre-Construction  
 Found and tagged  Reestablished  Referenced  Post-Construction

Narrative of corner identified and monument as found, set, reset, replaced, or removed:

 See sheet #2 for description(s):

FOUND 3/4 INCH IRON PIN IN GROUND APPROXIMATELY 144 FEET NORTH OF PRODUCERS DRIVE AND INDUSTRIAL DRIVE INTERSECTION. SET THREE(3) CUT "X" REFERENCES AS SHOWN ON SHEET 2.

**SURVEYOR'S STATEMENT**

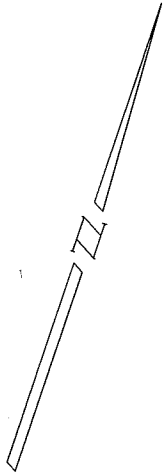
This Corner Record was prepared by me or under my direction in conformance with

the Professional Land Surveyors' Act on JUNE 8, 2022Signed James N. Landrum P.L.S. or R.C.E. No. LS 5837**COUNTY SURVEYOR'S STATEMENT**This Corner Record was received July 15, 2022and examined and filed August 2, 2022Signed James E. Hart P.L.S. or R.C.E. No. 8657Title County Surveyor

County Surveyor's Comment \_\_\_\_\_



NO SCALE



FOUND 3/4 INCH IRON PIN AT  
LOCATION PER PARCEL MAP  
14-147

PRODUCERS DR

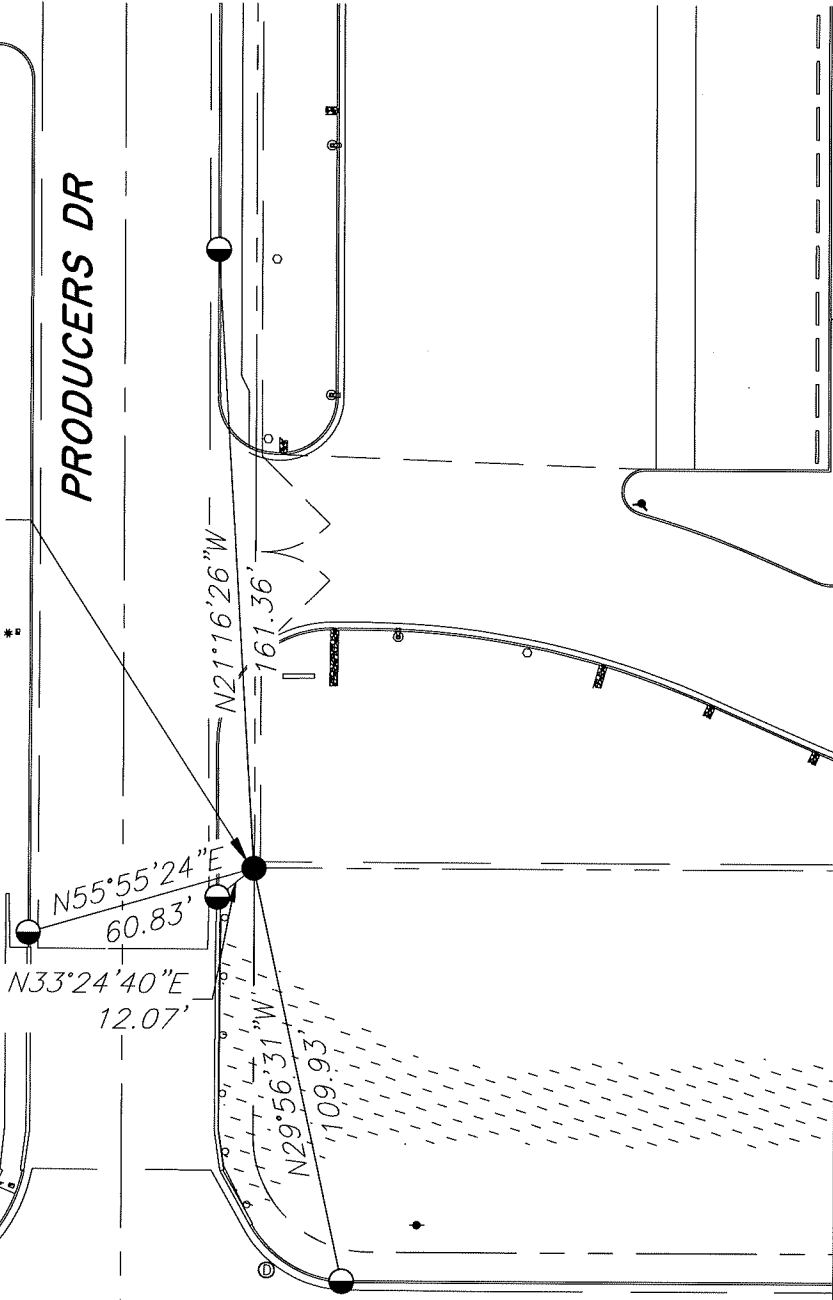
INDUSTRIAL DR

**LEGEND**

- FOUND MONUMENT
- ◐ SET CUT "X" UNLESS OTHERWISE SHOWN

**NOTES**

1. NOTE THAT BEARINGS SHOWN ARE FOR ANGULAR CONTROL FROM LOCAL CONSTRUCTION SURVEY DATA.



(S)