

# CORNER RECORD

Agency Index CR-22-192

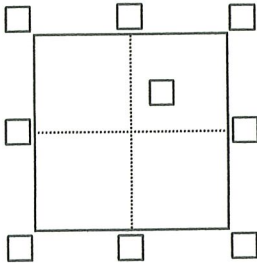
Document Number \_\_\_\_\_

City of Stockton, County of San Joaquin, California

Brief Legal Description **The centerline intersection of N. El Dorado Street with Los Felis Avenue per 18 M 23.**

### CORNER TYPE

### COORDINATES (Optional)



Government Corner  Control   
Meander  Property   
Rancho  Other

Date of Survey 05/22/2022

N. \_\_\_\_\_ N/A \_\_\_\_\_ E. \_\_\_\_\_ N/A \_\_\_\_\_

Elevation N/A

Units  Metric  U.S. Survey Foot

Horizontal Datum N/A

Zone N/A Epoch Date N/A

Vertical Datum \_\_\_\_\_

Complies with Public Resources Code §§8801-8819

Complies with Public Resources Code §§8890-8902

PLS Act Ref.:  8765(d)  8771  8773  Other

Corner / Monument:  Left as found  Established  Rebuilt  Pre-Construction  
 Found and tagged  Reestablished  Referenced  Post-Construction

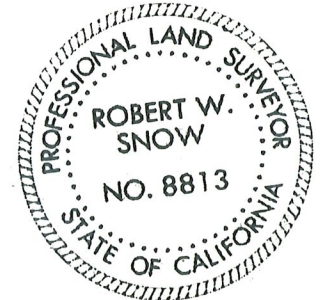
Narrative of corner identified and monument as found, set, reset, replaced, or removed:  
 See sheet #2 for description(s):

Found 3/4" iron pin, no visible tag (point #13), located in a monument box at the centerline intersection of North El Dorado Street with Los Felis Avenue per 18 M 23. Set four (4) 1-1/4" brass discs stamped "SURVEY POINT" being drilled and then driven into the top of a concrete curb as reference points. See Page 2 of 2 for a depiction of this survey. Angles and distances established utilizing a total station.

### SURVEYOR'S STATEMENT

This Corner Record was prepared by me or under my direction in conformance with the Professional Land Surveyors' Act on June 30, 2022

Signed Robert W. Snow P.L.S. or R.C.E. No. 8813



### COUNTY SURVEYOR'S STATEMENT

This Corner Record was received July 8, 2022  
and examined and filed July 22, 2022

Signed James E. Hart P.L.S. or R.C.E. No. 8657

Title County Surveyor

County Surveyor's Comment



PROJECT: ROAD DIET ON N. EL DORADO STREET, TURN AND BIKE LANES  
 FEDERAL PROJECT NO. HSIPL-5008(162) AND CITY PROJECT NO. WT17019  
 REFERENCE NOTES FOR FOUND MONUMENTS  
 CITY OF STOCKTON, COUNTY OF SAN JOAQUIN

DATE: 06/30/2022  
 PAGE: 5 OF 6

FIELD CREW:  
 R. SNOW & A. MAWLAE

FROM - TO	HZ. ANGLE	HZ. DISTANCE
13-116	00°00'00"	342.17'
13-15	∠R = 04°56'59"	284.28'
13-117	∠R = 27°45'01"	83.40'
13-118	∠R = 149°45'10"	56.21'
13-119	∠R = 259°48'46"	80.16'
13-14	∠R = 274°56'34"	62.00'
13-120	∠R = 289°51'25"	81.66'

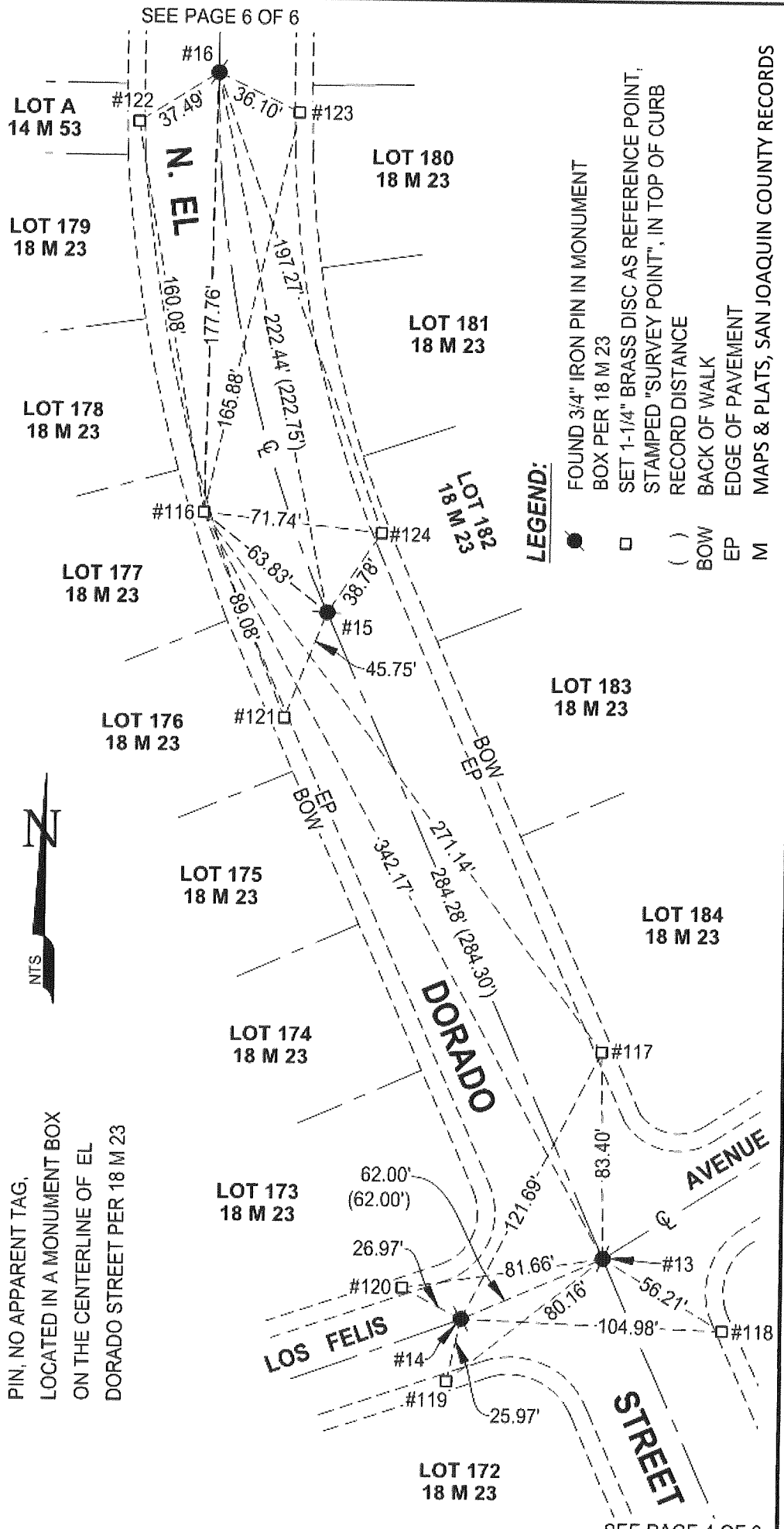
FROM - TO	HZ. ANGLE	HZ. DISTANCE
116-117	00°00'00"	271.14'
116-121	∠R = 14°57'00"	89.08'
116-122	∠R = 206°55'50"	160.08'
116-16	∠R = 218°10'41"	177.76'
116-123	∠R = 229°34'18"	165.88'
116-124	∠R = 313°03'45"	71.74'
116-15	∠R = 345°38'47"	63.83'

#116, #117, #118, #119, #120, #121, #122, #123, & #124 - SET 1-1/4" BRASS DISC AS REFERENCE POINT, STAMPED "SURVEY POINT", IN TOP OF CURB

#13, #14, #15 & #16 - FOUND 3/4" IRON PIN, NO APPARENT TAG, LOCATED IN A MONUMENT BOX ON THE CENTERLINE OF EL DORADO STREET PER 18 M 23



SEE PAGE 6 OF 6



- LEGEND:**
- FOUND 3/4" IRON PIN IN MONUMENT BOX PER 18 M 23
  - SET 1-1/4" BRASS DISC AS REFERENCE POINT, STAMPED "SURVEY POINT", IN TOP OF CURB
  - ( ) RECORD DISTANCE
  - BOW BACK OF WALK
  - EP EDGE OF PAVEMENT
  - M MAPS & PLATS, SAN JOAQUIN COUNTY RECORDS

SEE PAGE 4 OF 6