

# CORNER RECORD

Agency Index

CR-22-179

Document Number

City of Stockton

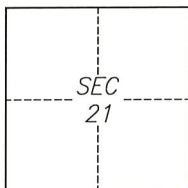
County of San Joaquin

, California

Brief Legal Description Intersection of Doctor Martin Luther King Jr Blvd and Grant St

## CORNER TYPE

## COORDINATES (Optional)

C.M. WEBER  
GRANT

- ☐ Government Corner ☐ Control  
☐ Meander ☒ Property  
☐ Rancho ☐ Other

Date of Survey May 6, 2022

N. \_\_\_\_\_ E. \_\_\_\_\_

Elevation \_\_\_\_\_

Units ☐ Metric ☐ U.S. Survey Foot

Horizontal Datum \_\_\_\_\_

Zone \_\_\_\_\_ Epoch Date \_\_\_\_\_

Vertical Datum \_\_\_\_\_

☐ Complies with Public Resources Code §§8801-8819☐ Complies with Public Resources Code §§8890-8902

PLS Act Ref.:

☐ 8765(d)☒ 8771☐ 8773☐ Other:Corner/  
Monument:☒ Left as found☐ Established☐ Rebuilt☒ Pre-Construction☐ Found and tagged☐ Reestablished☒ Referenced☐ Post-Construction

Narrative of corner identified and monument as found, set, reset, replaced, or removed:

☐ See sheet #2 for description(s):

## SURVEYOR'S STATEMENT

This Corner Record was prepared by me or under my direction in conformance with

the Professional Land Surveyors' Act on June 9, 2022

Signed

P.L.S. or R.C.E. No.

8040



## COUNTY SURVEYOR'S STATEMENT

This Corner Record was received

July 7, 2022

and examined and filed

July 21, 2022

Signed

P.L.S. or R.C.E. No.

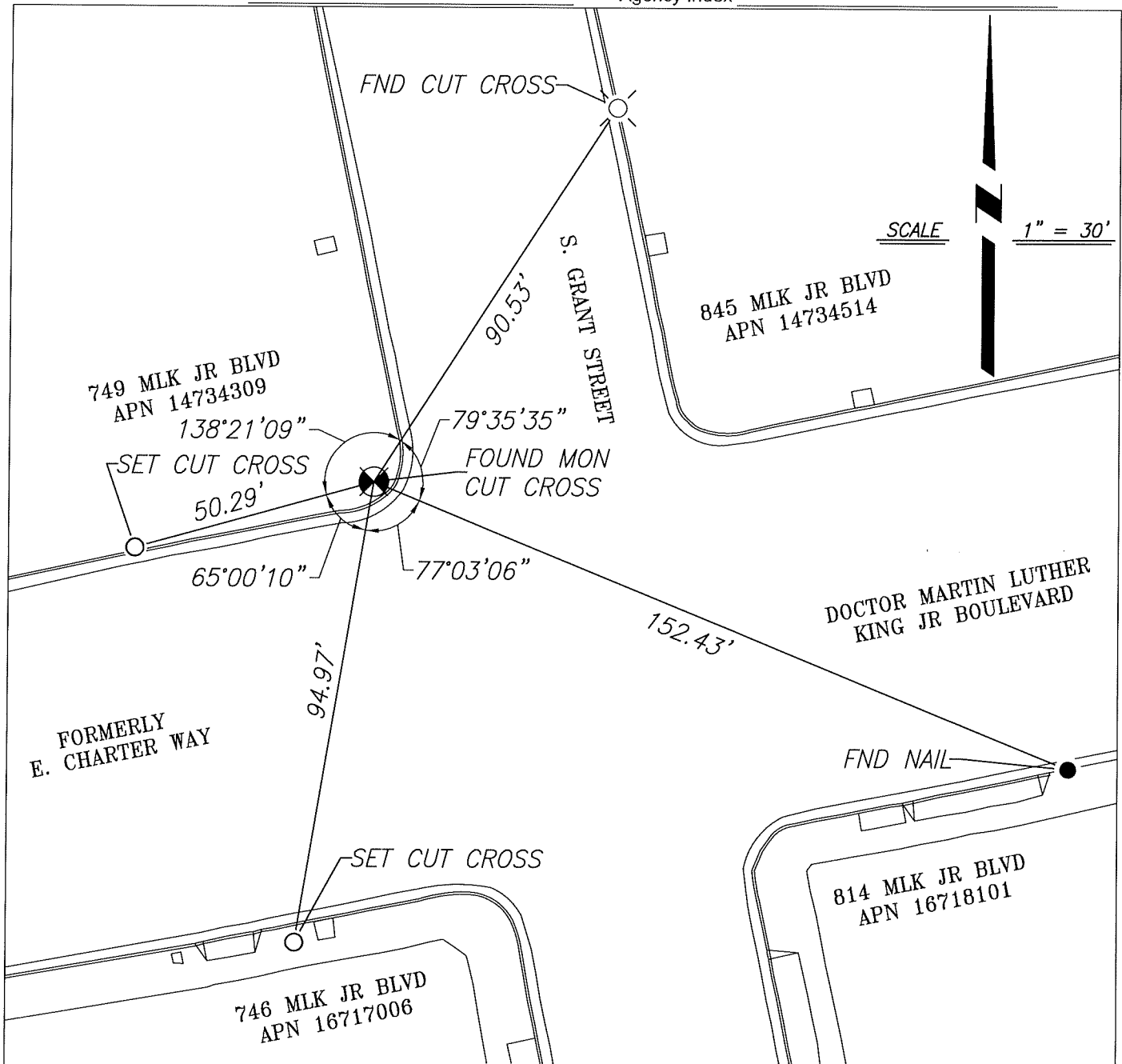
8657


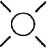


Title

County Surveyor

County Surveyor's Comment



LEGEND

-  FOUND MONUMENT, CUT CROSS IN CONCRETE
-  FOUND CUT CROSS ON CONCRETE
-  FOUND NAIL IN CONCRETE, NO TAG
-  SET CUT CROSS ON CONCRETE AS REFERENCE POINT

APN ASSESSOR'S PARCEL NUMBER

NOTES

1. FOUND MONUMENTS ARE NOT OF RECORD