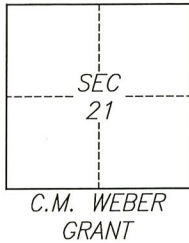


CORNER RECORD

Agency Index CR-22-178
 Document Number _____

City of Stockton County of San Joaquin, California
 Brief Legal Description Intersection of Doctor Martin Luther King Jr Blvd and California St



CORNER TYPE

Government Corner Control
 Meander Property
 Rancho Other

Date of Survey May 6, 2022

COORDINATES (Optional)

N. _____ E. _____
 Elevation _____
 Units Metric U.S. Survey Foot
 Horizontal Datum _____
 Zone _____ Epoch Date _____
 Vertical Datum _____
 Complies with Public Resources Code §§8801-8819
 Complies with Public Resources Code §§8890-8902

PLS Act Ref.: 8765(d) 8771 8773 Other:

Corner/
Monument: Left as found Established Rebuilt Pre-Construction
 Found and tagged Reestablished Referenced Post-Construction

Narrative of corner identified and monument as found, set, reset, replaced, or removed:
 See sheet #2 for description(s):

SURVEYOR'S STATEMENT

This Corner Record was prepared by me or under my direction in conformance with
 the Professional Land Surveyors' Act on June 9, 2022
 Signed [Signature] P.L.S. or R.C.E. No. 8040

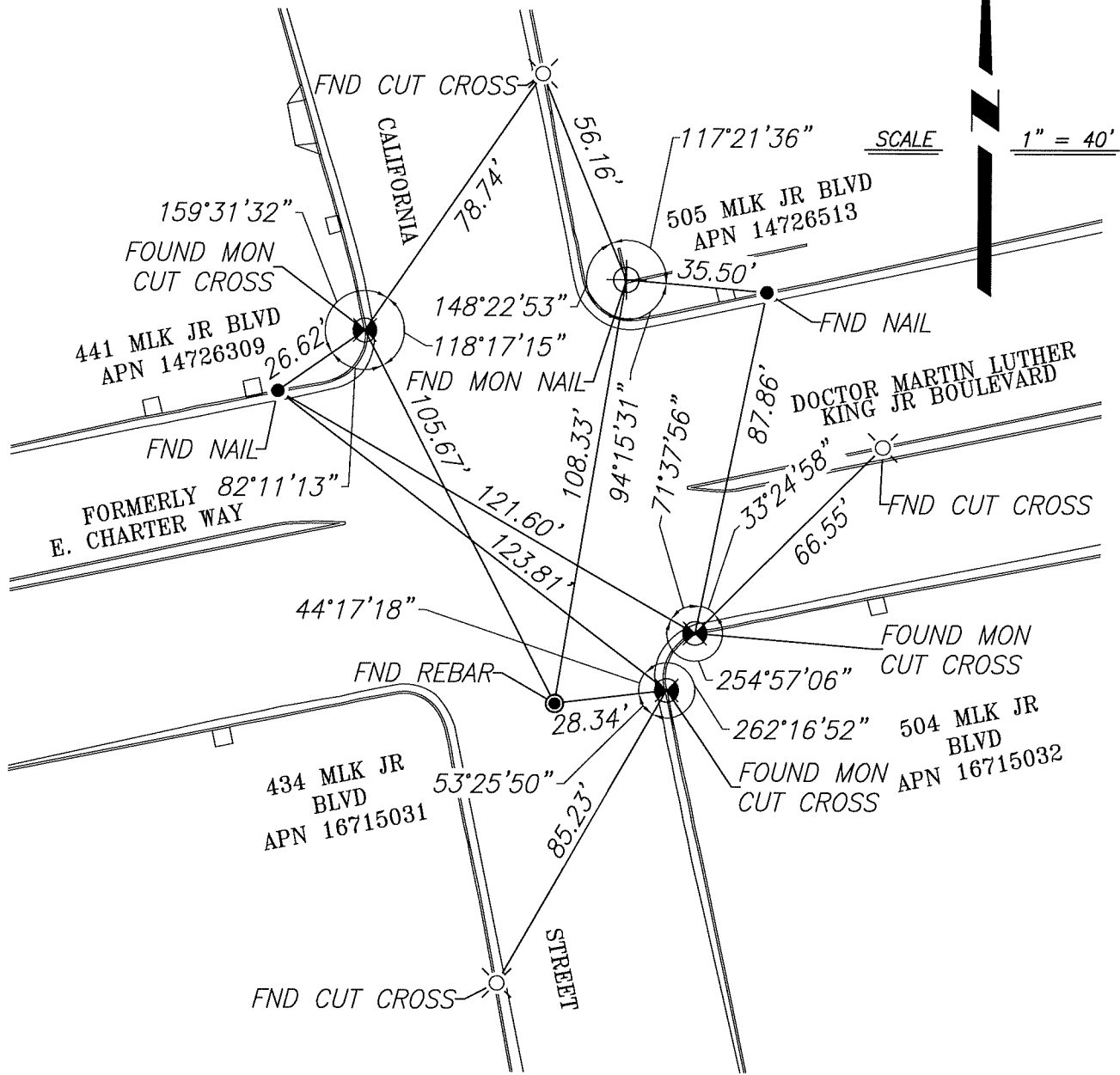


COUNTY SURVEYOR'S STATEMENT

This Corner Record was received July 7, 2022
 and examined and filed July 21, 2022
 Signed James E Hart P.L.S. or R.C.E. No. 8657
 Title County Surveyor



County Surveyor's Comment _____



LEGEND

- FOUND MONUMENT, CUT CROSS IN CONCRETE
- FOUND MONUMENT, NAIL, NO TAG
- FOUND NAIL, NO TAG, AS REFERENCE
- FOUND CUT CROSS, AS REFERENCE
- FOUND CONTROL REBAR, AS REFERENCE
- APN ASSESSOR'S PARCEL NUMBER

NOTES

1. FOUND MONUMENTS ARE NOT OF RECORD