

CORNER RECORD

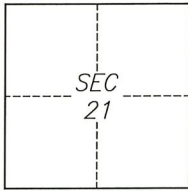
Agency Index CR-22-177
 Document Number _____

City of Stockton County of San Joaquin, California

Brief Legal Description Intersection of Doctor Martin Luther King Jr Blvd and South San Joaquin St

CORNER TYPE

COORDINATES (Optional)



C.M. WEBER
GRANT

- Government Corner Control
 Meander Property
 Rancho Other

Date of Survey May 6, 2022

N. _____ E. _____

Elevation _____

Units Metric U.S. Survey Foot

Horizontal Datum _____

Zone _____ Epoch Date _____

Vertical Datum _____

Complies with Public Resources Code §§8801-8819

Complies with Public Resources Code §§8890-8902

PLS Act Ref.: 8765(d) 8771 8773 Other:

Corner/Monument: Left as found Established Rebuilt Pre-Construction

Found and tagged Reestablished Referenced Post-Construction

Narrative of corner identified and monument as found, set, reset, replaced, or removed:

See sheet #2 for description(s):

SURVEYOR'S STATEMENT

This Corner Record was prepared by me or under my direction in conformance with
 the Professional Land Surveyors' Act on June 9, 2022
 Signed [Signature] P.L.S. or R.C.E. No. 8040

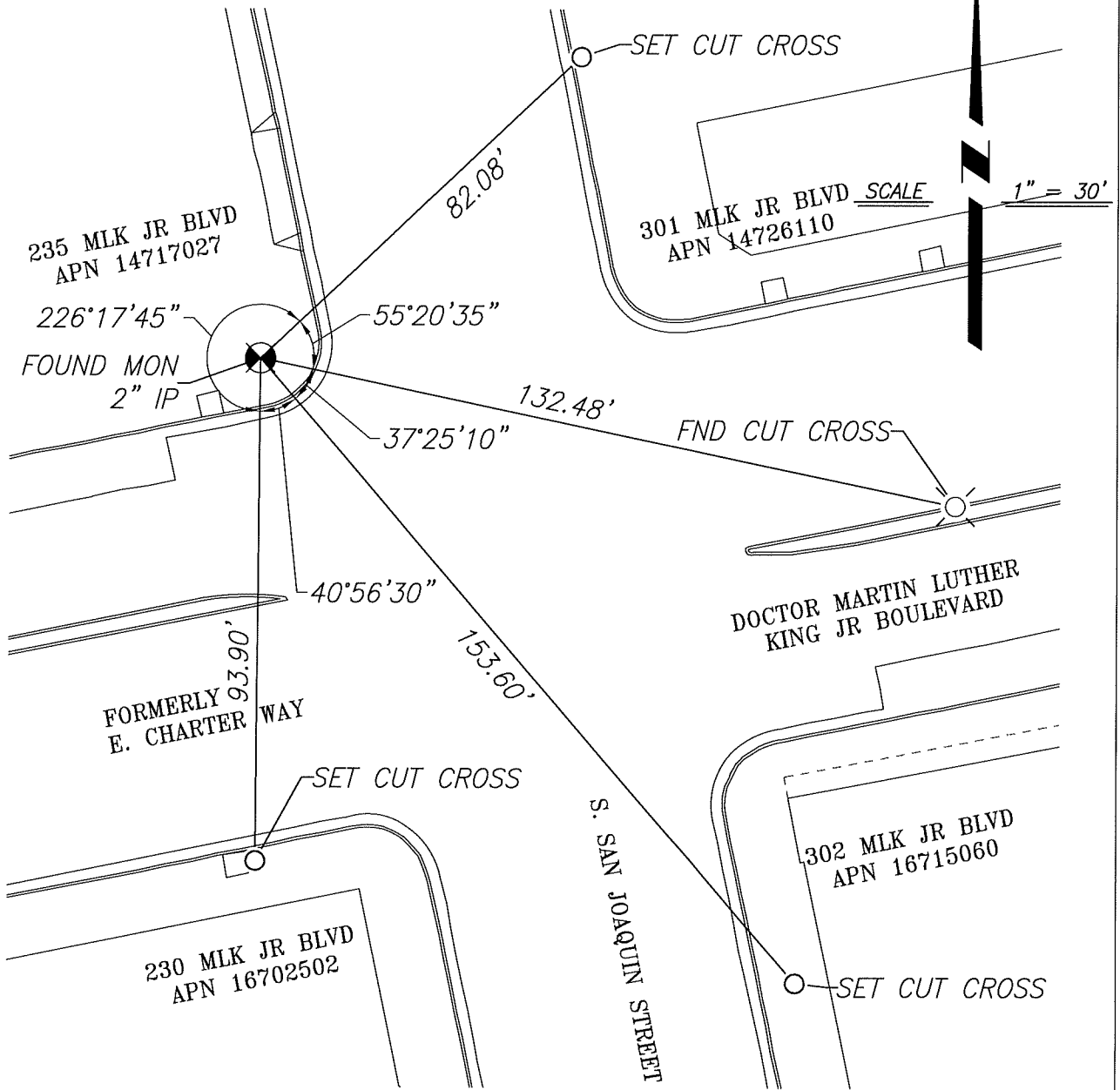


COUNTY SURVEYOR'S STATEMENT




This Corner Record was received July 7, 2022
 and examined and filed July 21, 2022
 Signed James E. Hart P.L.S. or R.C.E. No. 8657
 Title County Surveyor



County Surveyor's Comment



LEGEND

-  FOUND MONUMENT, 2" IRON PIPE, NO TAG
-  FOUND CUT CROSS ON CONCRETE
-  SET CUT CROSS ON CONCRETE AS REFERENCE POINT
- APN ASSESSOR'S PARCEL NUMBER
- IP IRON PIPE

NOTES

1. FOUND MONUMENTS ARE NOT OF RECORD