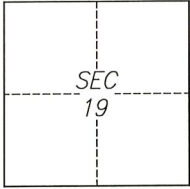


# CORNER RECORD

Agency Index CR-22-170  
Document Number \_\_\_\_\_

City of Stockton County of San Joaquin, California  
Brief Legal Description Intersection of North Madison Street and West Willow Street.



C.M. WEBER GRANT

### CORNER TYPE

- Government Corner
- Meander
- Rancho
- Control
- Property
- Other

Date of Survey 2022-03-09

### COORDINATES (Optional)

N. \_\_\_\_\_ E. \_\_\_\_\_  
 Elevation \_\_\_\_\_  
 Units  Metric  U.S. Survey Foot  
 Horizontal Datum \_\_\_\_\_  
 Zone \_\_\_\_\_ Epoch Date \_\_\_\_\_  
 Vertical Datum \_\_\_\_\_  
 Complies with Public Resources Code §§8801-8819  
 Complies with Public Resources Code §§8890-8902

PLS Act Ref.:  8765(d)  8771  8773  Other:  
 Corner/Monument:  Left as found  Established  Rebuilt  Pre-Construction  
 Found and tagged  Reestablished  Referenced  Post-Construction

Narrative of corner identified and monument as found, set, reset, replaced, or removed:  
 See sheet #2 for description(s):

### SURVEYOR'S STATEMENT

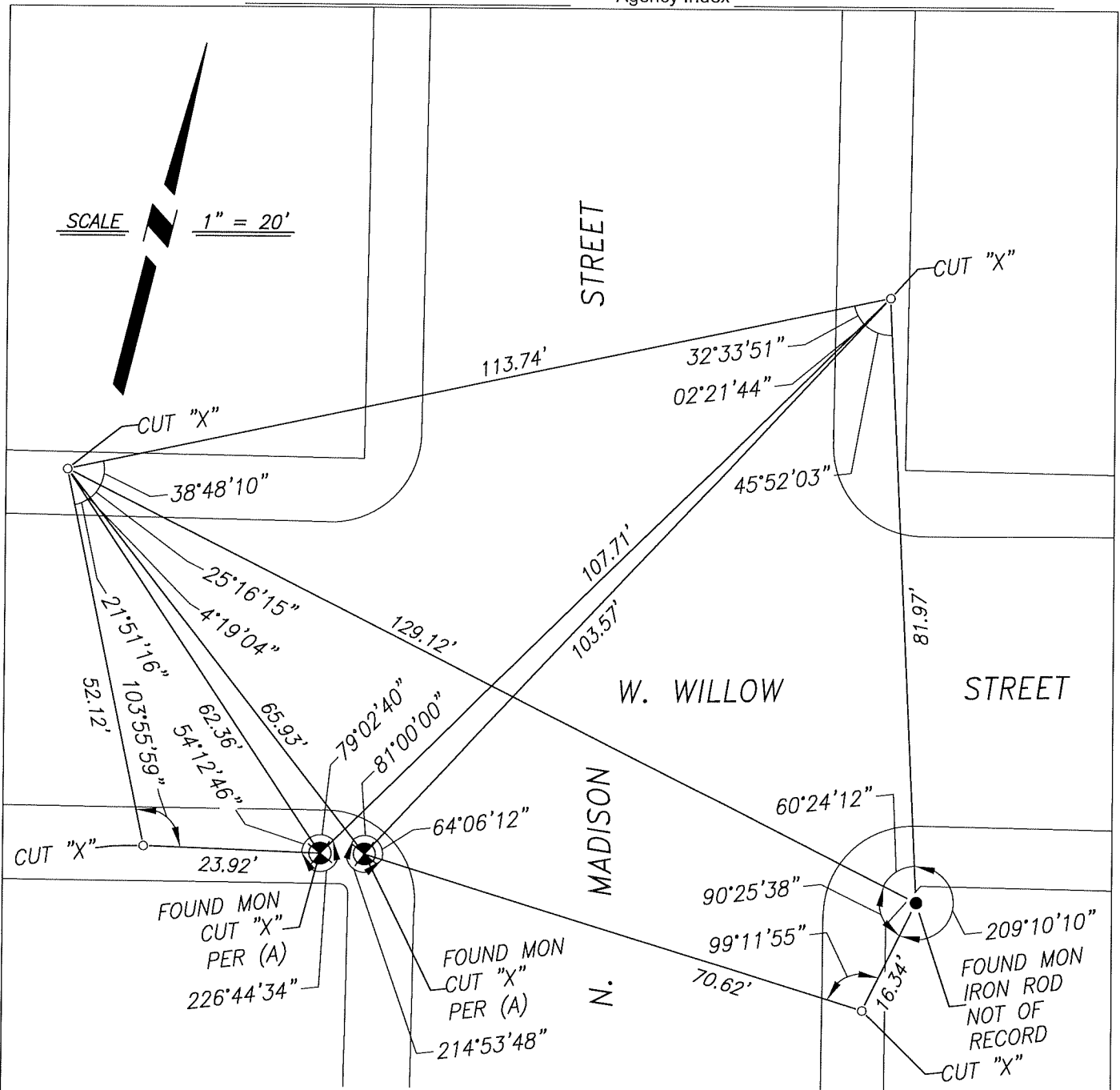
This Corner Record was prepared by me or under my direction in conformance with  
 the Professional Land Surveyors' Act on June 7, 2022  
 Signed [Signature] P.L.S. or R.C.E. No. 8040



### COUNTY SURVEYOR'S STATEMENT

This Corner Record was received June 13, 2022  
 and examined and filed June 30, 2022  
 Signed James E. Hart P.L.S. or R.C.E. No. 8657  
 Title County Surveyor  
 County Surveyor's Comment \_\_\_\_\_





**REFERENCE**

(A) RECORD OF SURVEY IN THE CITY OF STOCKTON, FILED ON DECEMBER 11, 2018, IN BOOK 39 OF SURVEYS, PAGE 98, SAN JOAQUIN COUNTY RECORDS.

**LEGEND**

- FOUND MONUMENT NAIL, NO TAG
- ⊗ FOUND MONUMENT, CUT "X" ON CONCRETE SIDEWALK
- SET CUT "X" ON CONCRETE SIDEWALK AS REFERENCE POINT

**NOTES**

1. ALL REFERENCES ARE SAN JOAQUIN COUNTY RECORDS