

# CORNER RECORD

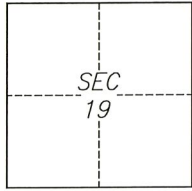
Agency Index CR-22-169

Document Number \_\_\_\_\_

City of Stockton

County of San Joaquin, California

Brief Legal Description Southwest Corner of North Madison Street and West Rose Street.



C.M. WEBER GRANT

### CORNER TYPE

- Government Corner
- Meander
- Rancho
- Control
- Property
- Other

Date of Survey 2022-03-09

### COORDINATES (Optional)

N. \_\_\_\_\_ E. \_\_\_\_\_

Elevation \_\_\_\_\_

Units  Metric  U.S. Survey Foot

Horizontal Datum \_\_\_\_\_

Zone \_\_\_\_\_ Epoch Date \_\_\_\_\_

Vertical Datum \_\_\_\_\_

Complies with Public Resources Code §§8801-8819

Complies with Public Resources Code §§8890-8902

PLS Act Ref.:  8765(d)  8771  8773  Other:

Corner/Monument:  Left as found  Established  Rebuilt  Pre-Construction

Found and tagged  Reestablished  Referenced  Post-Construction

Narrative of corner identified and monument as found, set, reset, replaced, or removed:

See sheet #2 for description(s):

### SURVEYOR'S STATEMENT

This Corner Record was prepared by me or under my direction in conformance with

the Professional Land Surveyors' Act on June 7, 2022

Signed [Signature] P.L.S. or R.C.E. No. 8040



### COUNTY SURVEYOR'S STATEMENT

This Corner Record was received June 13, 2022

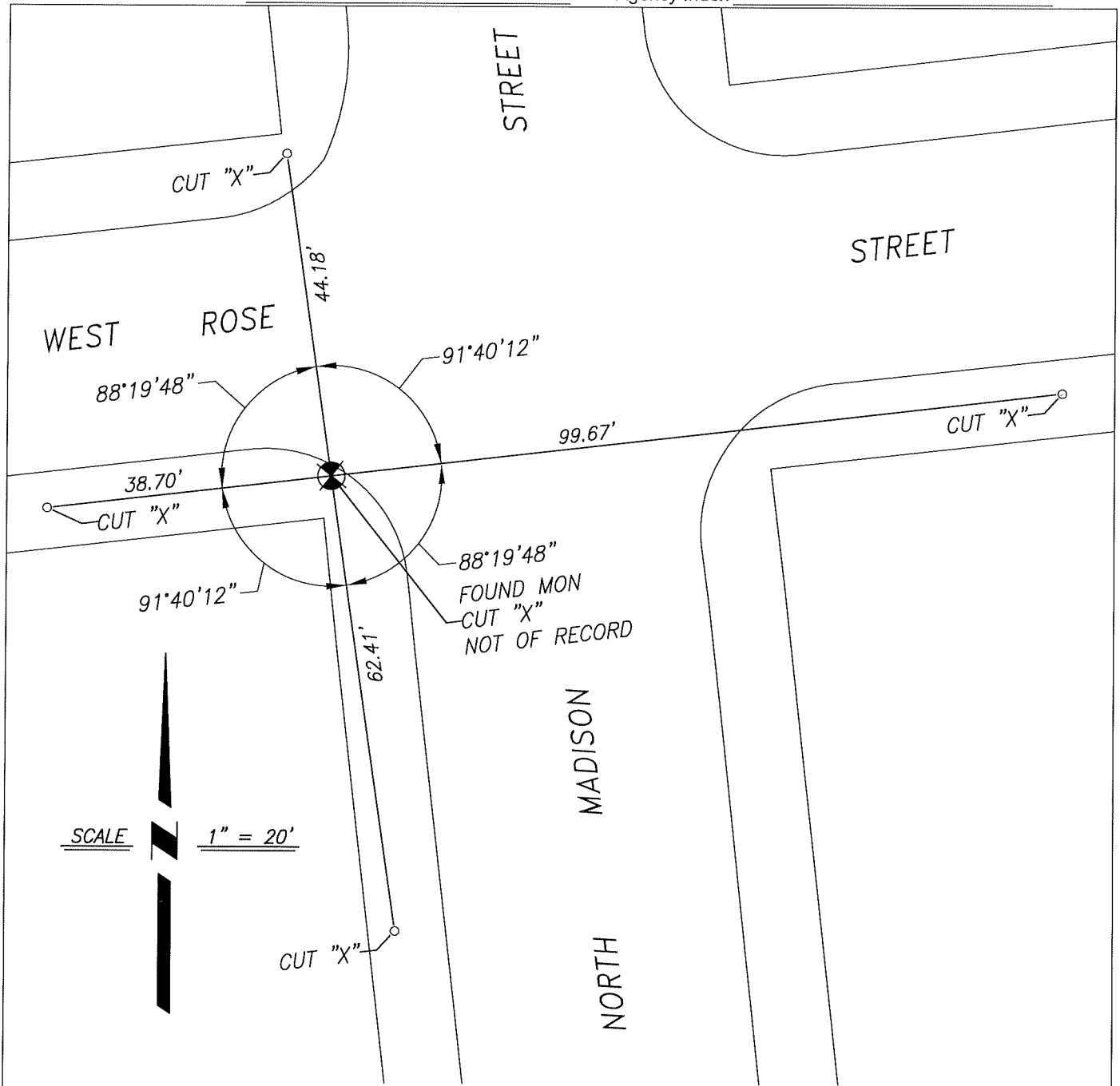
and examined and filed June 30, 2022

Signed James E. Hart P.L.S. or R.C.E. No. 8657



Title County Surveyor

County Surveyor's Comment \_\_\_\_\_





LEGEND

-  FOUND MONUMENT, CUT "X" ON CONCRETE SIDEWALK
-  SET CUT "X" ON CONCRETE SIDEWALK AS REFERENCE POINT