

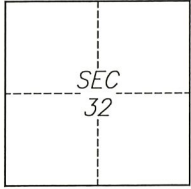
CORNER RECORD

Agency Index CR-22-166
Document Number _____

City of Stockton

County of San Joaquin, California

Brief Legal Description Southeast corner of Intersection of Rose Marie Lane and Lorenzo Lane.



T2N/R6E

CORNER TYPE

- Government Corner Control
 Meander Property
 Rancho Other

Date of Survey 2022-03-09

COORDINATES (Optional)

- N. _____ E. _____
 Elevation _____
 Units Metric U.S. Survey Foot
 Horizontal Datum _____
 Zone _____ Epoch Date _____
 Vertical Datum _____
 Complies with Public Resources Code §§8801-8819
 Complies with Public Resources Code §§8890-8902

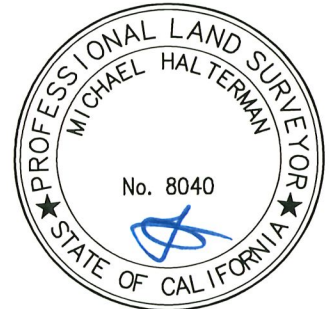
- PLS Act Ref.: 8765(d) 8771 8773 Other:
 Corner/
 Monument: Left as found Established Rebuilt Pre-Construction
 Found and tagged Reestablished Referenced Post-Construction

Narrative of corner identified and monument as found, set, reset, replaced, or removed:
 See sheet #2 for description(s):

SURVEYOR'S STATEMENT

This Corner Record was prepared by me or under my direction in conformance with the Professional Land Surveyors' Act on June 7, 2022

Signed [Signature] P.L.S. or R.C.E. No. 8040



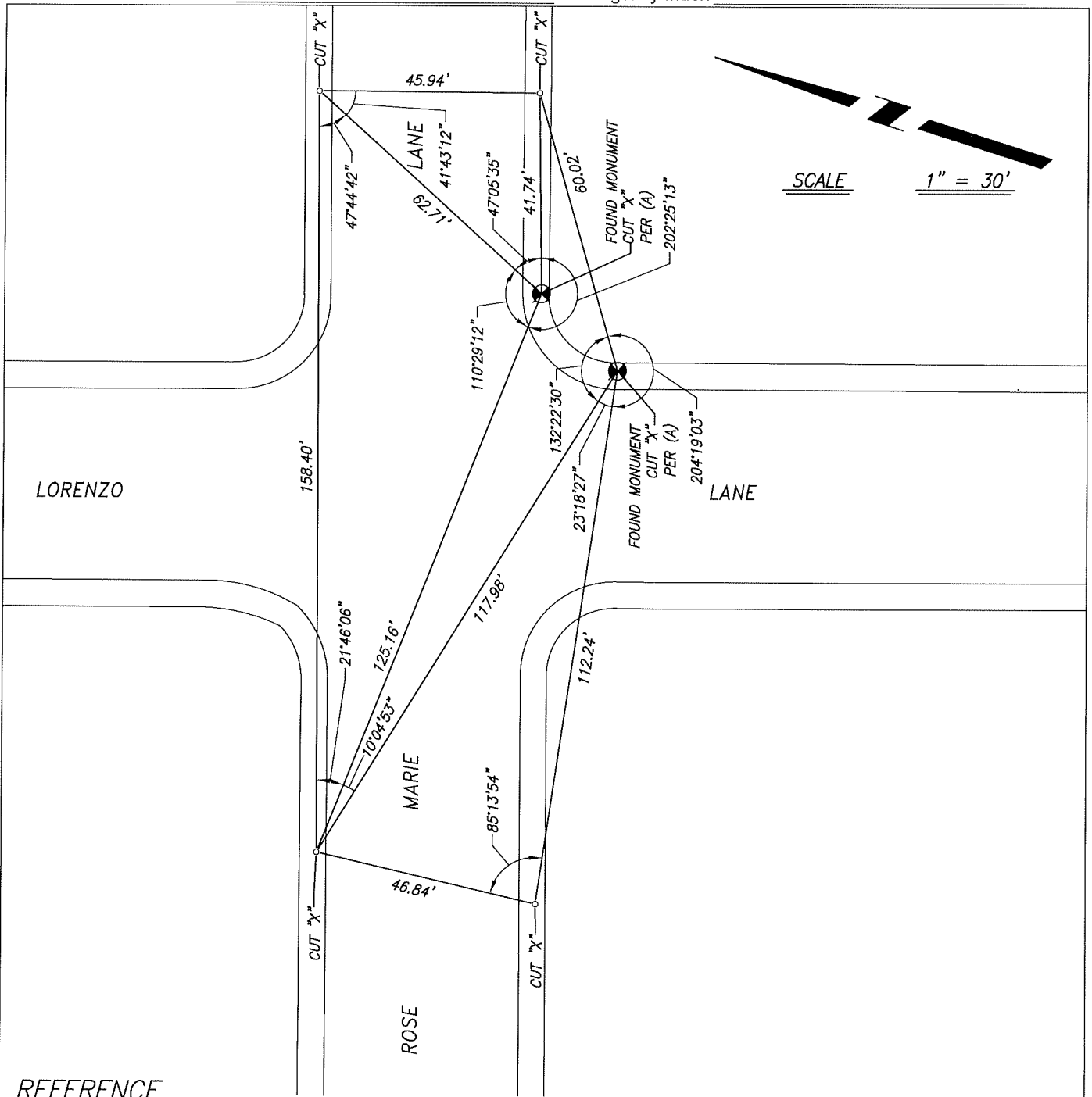
COUNTY SURVEYOR'S STATEMENT

This Corner Record was received June 13, 2022 and examined and filed June 30, 2022

Signed James E Hart P.L.S. or R.C.E. No. 8657
Title County Surveyor

County Surveyor's Comment





REFERENCE

(A) MAP OF VENETIAN BRIDGES, UNIT NO. 1, IN THE CITY OF STOCKTON, FILED ON APRIL 25, 1978, IN VOLUME 23 OF MAPS AND PLATS, PAGE 50, SAN JOAQUIN COUNTY RECORDS.

LEGEND

- ⊗ FOUND MONUMENT, CUT "X" ON CONCRETE SIDEWALK
- SET CUT "X" ON CONCRETE SIDEWALK AS REFERENCE POINT

NOTES

1. ALL REFERENCES ARE SAN JOAQUIN COUNTY RECORDS