

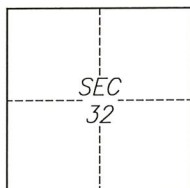
# CORNER RECORD

Agency Index CR-22-165  
Document Number \_\_\_\_\_

City of Stockton

County of San Joaquin, California

Brief Legal Description Southwest corner of Intersection of Rose Marie Lane and Lorenzo Lane.



T2N/R6E

### CORNER TYPE

- Government Corner     Control  
 Meander                     Property  
 Rancho                          Other

Date of Survey 2022-03-09

### COORDINATES (Optional)

- N. \_\_\_\_\_ E. \_\_\_\_\_  
 Elevation \_\_\_\_\_  
 Units     Metric         U.S. Survey Foot  
 Horizontal Datum \_\_\_\_\_  
 Zone \_\_\_\_\_ Epoch Date \_\_\_\_\_  
 Vertical Datum \_\_\_\_\_  
 Complies with Public Resources Code §§8801-8819  
 Complies with Public Resources Code §§8890-8902

- PLS Act Ref.:     8765(d)                     8771                     8773                     Other:  
 Corner/  
 Monument:     Left as found                     Established                     Rebuilt                     Pre-Construction  
                    Found and tagged                     Reestablished                     Referenced                     Post-Construction

Narrative of corner identified and monument as found, set, reset, replaced, or removed:

See sheet #2 for description(s):

### SURVEYOR'S STATEMENT

This Corner Record was prepared by me or under my direction in conformance with

the Professional Land Surveyors' Act on June 7, 2022

Signed [Signature] P.L.S. or R.G.E. No. 8040



### COUNTY SURVEYOR'S STATEMENT

This Corner Record was received June 13, 2022

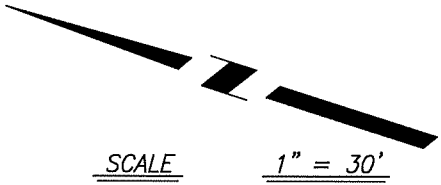
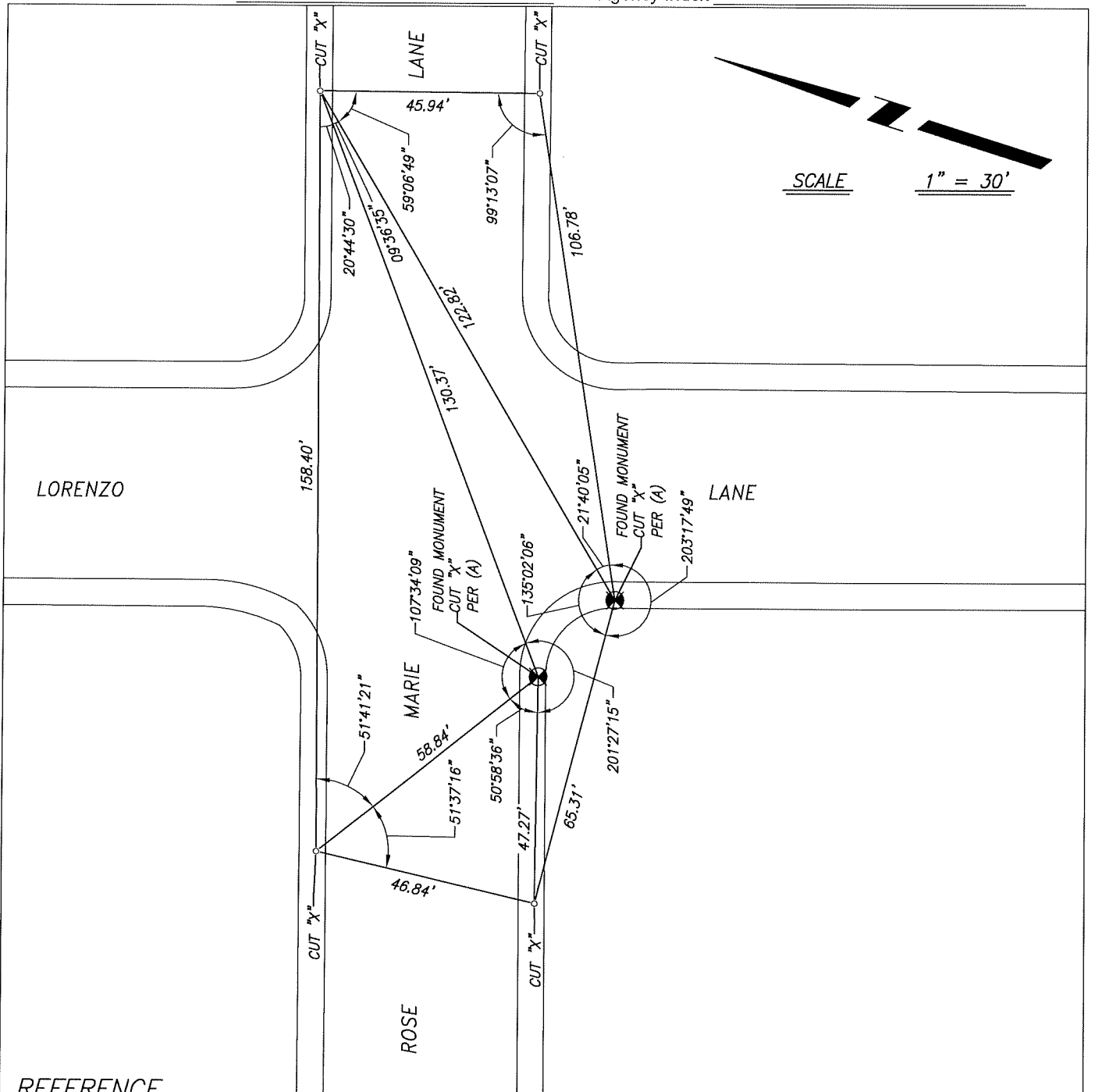
and examined and filed June 30, 2022

Signed James E Hart P.L.S. or R.G.E. No. 8657

Title County Surveyor

County Surveyor's Comment





REFERENCE

(A) MAP OF VENETIAN BRIDGES, UNIT NO. 1, IN THE CITY OF STOCKTON, FILED ON APRIL 25, 1978, IN VOLUME 23 OF MAPS AND PLATS, PAGE 50, SAN JOAQUIN COUNTY RECORDS.

LEGEND

- ⊗ FOUND MONUMENT, CUT "X" ON CONCRETE SIDEWALK
- SET CUT "X" ON CONCRETE SIDEWALK AS REFERENCE POINT

NOTES

1. ALL REFERENCES ARE SAN JOAQUIN COUNTY RECORDS