

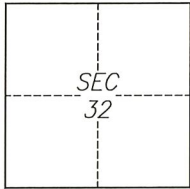
# CORNER RECORD

Agency Index CR-22-163  
Document Number \_\_\_\_\_

City of Stockton

County of San Joaquin, California

Brief Legal Description Eastern Intersection of Rose Marie Lane and Piccardo Circle.



T2N/R6E

### CORNER TYPE

- Government Corner     Control  
 Meander                     Property  
 Rancho                          Other

Date of Survey 2022-03-09

### COORDINATES (Optional)

- N. \_\_\_\_\_ E. \_\_\_\_\_  
 Elevation \_\_\_\_\_  
 Units     Metric             U.S. Survey Foot  
 Horizontal Datum \_\_\_\_\_  
 Zone \_\_\_\_\_ Epoch Date \_\_\_\_\_  
 Vertical Datum \_\_\_\_\_  
 Complies with Public Resources Code §§8801-8819  
 Complies with Public Resources Code §§8890-8902

- PLS Act Ref.:     8765(d)             8771             8773             Other:  
 Corner/  
 Monument:     Left as found             Established             Rebuilt             Pre-Construction  
                    Found and tagged             Reestablished             Referenced             Post-Construction

Narrative of corner identified and monument as found, set, reset, replaced, or removed:

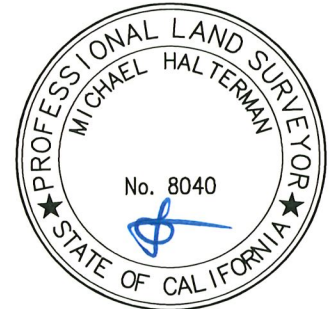
See sheet #2 for description(s):

### SURVEYOR'S STATEMENT

This Corner Record was prepared by me or under my direction in conformance with

the Professional Land Surveyors' Act on June 7, 2022

Signed [Signature] P.L.S. or R.C.E. No. 8040



### COUNTY SURVEYOR'S STATEMENT

This Corner Record was received June 13, 2022

and examined and filed June 30, 2022

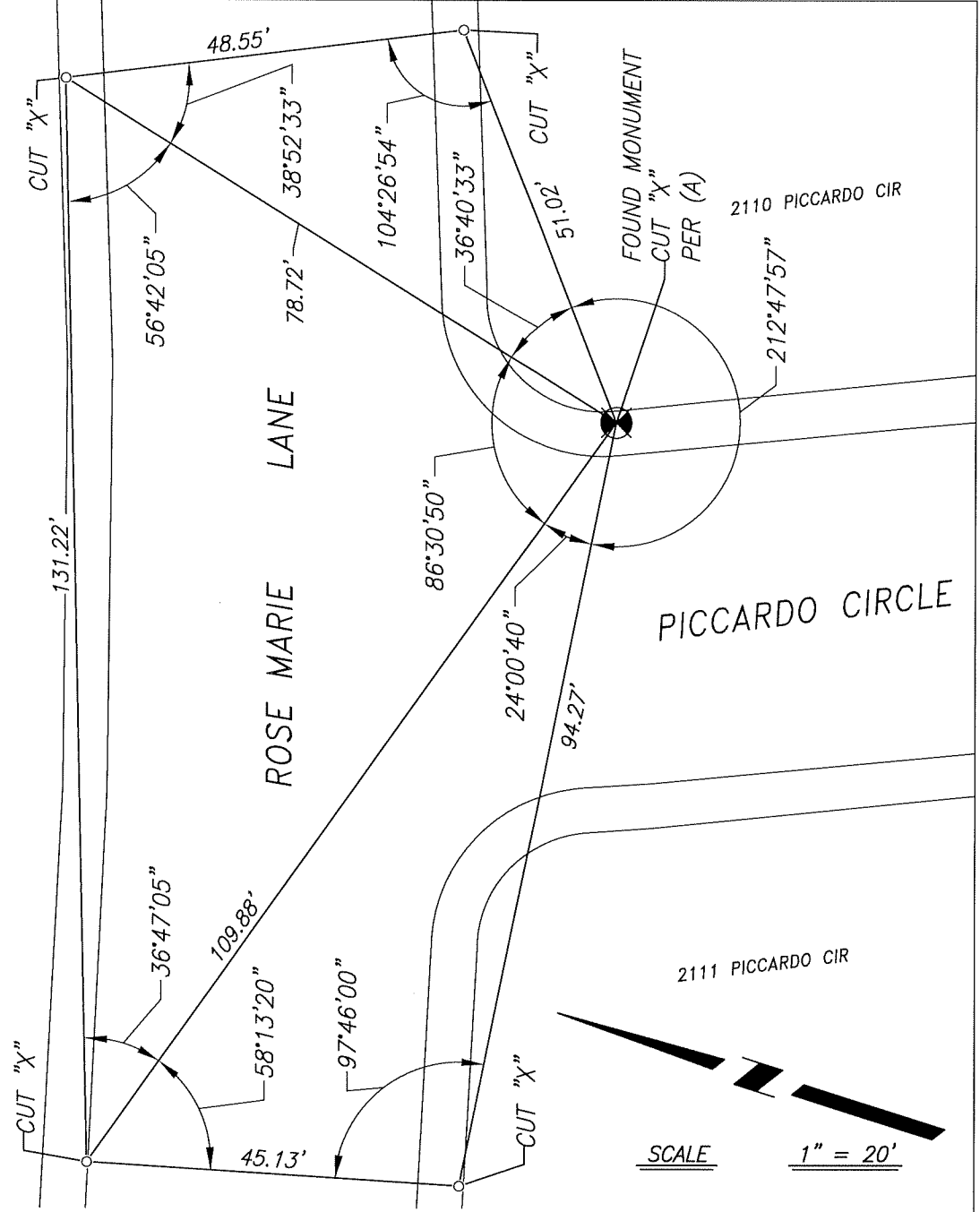
Signed James E. Hart P.L.S. or R.C.E. No. 8657

Title County Surveyor

County Surveyor's Comment



2101 ROSEMARIE LANE



**REFERENCE**

(A) MAP OF VENETIAN BRIDGES, UNIT NO. 2, IN THE CITY OF STOCKTON, FILED ON JUNE 12, 1979, IN VOLUME 24 OF MAPS AND PLATS, PAGE 72, SAN JOAQUIN COUNTY RECORDS.

**LEGEND**

- ⊗ FOUND MONUMENT, CUT "X" ON CONCRETE SIDEWALK
- SET CUT "X" ON CONCRETE SIDEWALK AS REFERENCE POINT

**NOTES**

1. ALL REFERENCES ARE SAN JOAQUIN COUNTY RECORDS