

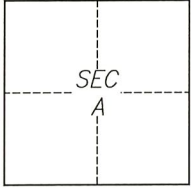
CORNER RECORD

Agency Index CR-22-161
Document Number _____

City of Stockton

County of San Joaquin, California

Brief Legal Description Intersection of Rose Marie Lane and Romano Drive.



C.M. WEBER GRANT

CORNER TYPE

- Government Corner
- Meander
- Rancho
- Control
- Property
- Other

Date of Survey 2022-03-09

COORDINATES (Optional)

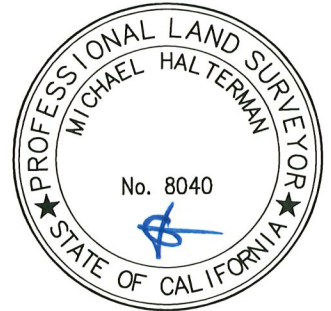
N. _____ E. _____
 Elevation _____
 Units Metric U.S. Survey Foot
 Horizontal Datum _____
 Zone _____ Epoch Date _____
 Vertical Datum _____
 Complies with Public Resources Code §§8801-8819
 Complies with Public Resources Code §§8890-8902

PLS Act Ref.: 8765(d) 8771 8773 Other:
 Corner/Monument: Left as found Established Rebuilt Pre-Construction
 Found and tagged Reestablished Referenced Post-Construction

Narrative of corner identified and monument as found, set, reset, replaced, or removed:
 See sheet #2 for description(s):

SURVEYOR'S STATEMENT

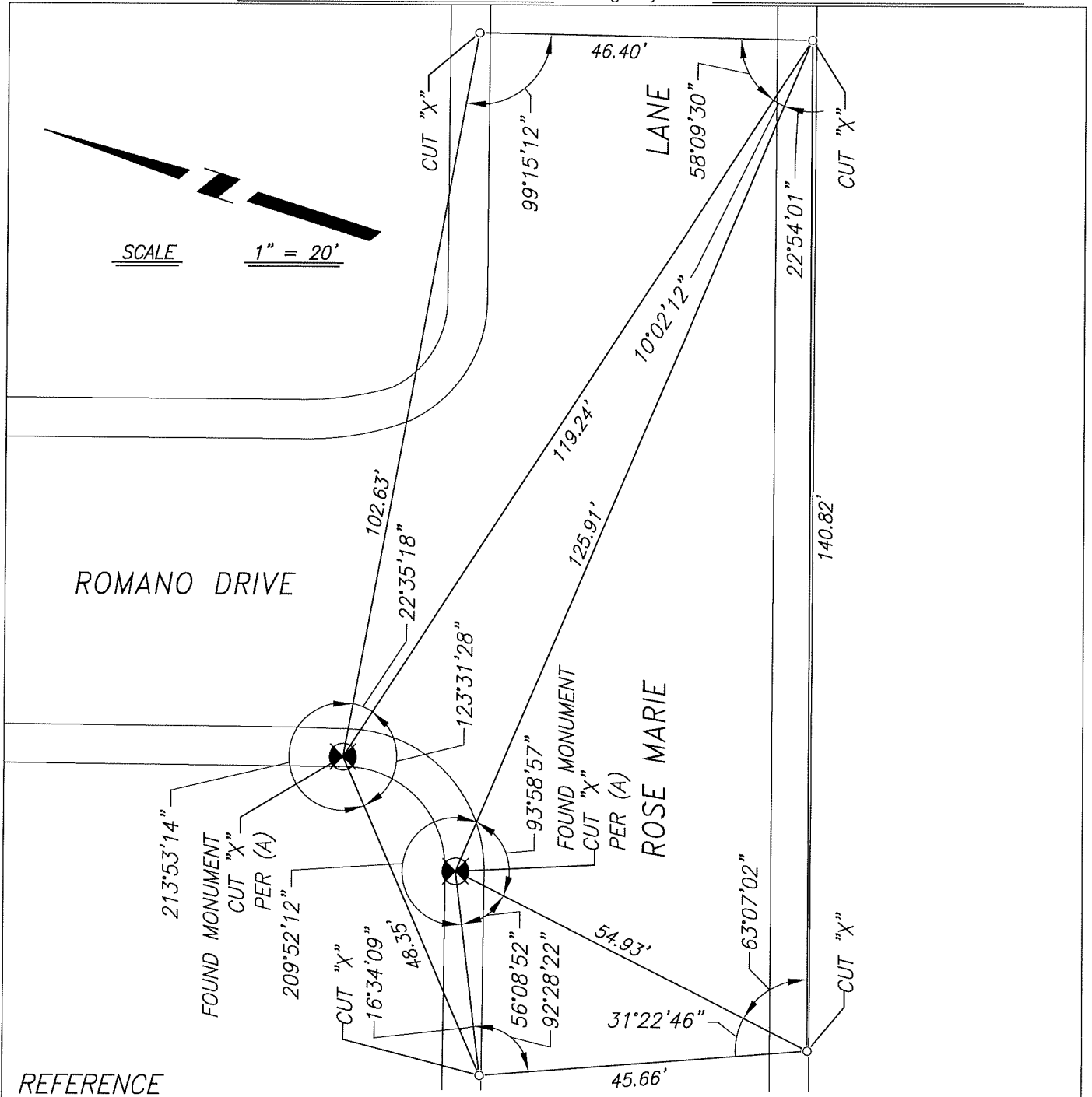
This Corner Record was prepared by me or under my direction in conformance with
 the Professional Land Surveyors' Act on June 7, 2022
 Signed [Signature] P.L.S. or R.C.E. No. 8040



COUNTY SURVEYOR'S STATEMENT

This Corner Record was received June 13, 2022
 and examined and filed June 30, 2022
 Signed James E. Hart P.L.S. or R.C.E. No. 8657
 Title County Surveyor
 County Surveyor's Comment _____





REFERENCE

(A) MAP OF VENETIAN BRIDGES, UNIT NO. 2, IN THE CITY OF STOCKTON, FILED ON JUNE 12, 1979, IN VOLUME 24 OF MAPS AND PLATS, PAGE 72, SAN JOAQUIN COUNTY RECORDS.

LEGEND

- ⊗ FOUND MONUMENT, CUT "X" ON CONCRETE SIDEWALK
- SET CUT "X" ON CONCRETE SIDEWALK AS REFERENCE POINT

NOTES

1. ALL REFERENCES ARE SAN JOAQUIN COUNTY RECORDS