

# CORNER RECORD

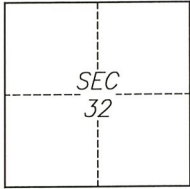
Agency Index CR-22-159  
 Document Number \_\_\_\_\_

City of Stockton County of San Joaquin, California

Brief Legal Description Intersection of Grand Canal Boulevard and Venezia Boulevard.

CORNER TYPE

COORDINATES (Optional)



T2N/R6E

- Government Corner     Control  
 Meander                     Property  
 Rancho                         Other

Date of Survey 2022-03-09

N. \_\_\_\_\_ E. \_\_\_\_\_  
 Elevation \_\_\_\_\_  
 Units     Metric         U.S. Survey Foot  
 Horizontal Datum \_\_\_\_\_  
 Zone \_\_\_\_\_ Epoch Date \_\_\_\_\_  
 Vertical Datum \_\_\_\_\_  
 Complies with Public Resources Code §§8801-8819  
 Complies with Public Resources Code §§8890-8902

PLS Act Ref.:     8765(d)                     8771                     8773                     Other:  
 Corner/  
 Monument:     Left as found                     Established                     Rebuilt                     Pre-Construction  
                    Found and tagged                     Reestablished                     Referenced                     Post-Construction

Narrative of corner identified and monument as found, set, reset, replaced, or removed:  
 See sheet #2 for description(s):

SURVEYOR'S STATEMENT

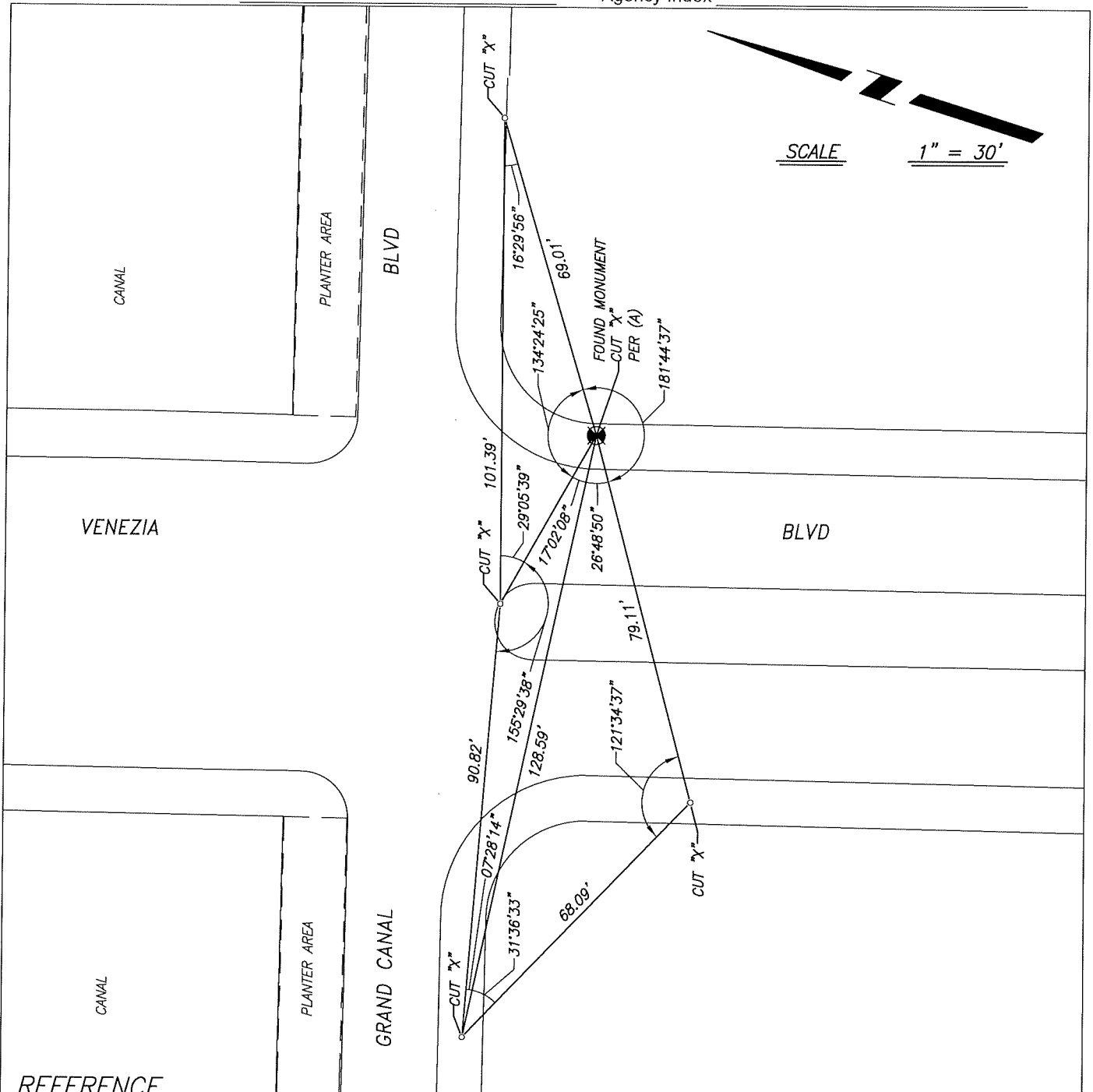
This Corner Record was prepared by me or under my direction in conformance with  
 the Professional Land Surveyors' Act on June 7, 2022  
 Signed *Michael Halterman* P.L.S. or R.C.E. No. 8040



COUNTY SURVEYOR'S STATEMENT

This Corner Record was received June 13, 2022  
 and examined and filed June 30, 2022  
 Signed *James E. Hart* P.L.S. or R.C.E. No. 8657  
 Title County Surveyor  
 County Surveyor's Comment \_\_\_\_\_





SCALE      1" = 30'

REFERENCE

(A) MAP OF VENETIAN BRIDGES, UNIT NO. 1, IN THE CITY OF STOCKTON, FILED ON APRIL 25, 1978, IN VOLUME 23 OF MAPS AND PLATS, PAGE 50, SAN JOAQUIN COUNTY RECORDS.

LEGEND

- ⊗ FOUND MONUMENT, CUT "X" ON CONCRETE SIDEWALK
- SET CUT "X" ON CONCRETE SIDEWALK AS REFERENCE POINT

NOTES

1. ALL REFERENCES ARE SAN JOAQUIN COUNTY RECORDS