

CORNER RECORD

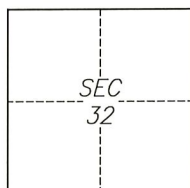
Agency Index CR-22-158
Document Number _____

City of Stockton County of San Joaquin, California

Brief Legal Description Grand Canal Boulevard at West End of Canal

CORNER TYPE

COORDINATES (Optional)



- ☐ Government Corner ☐ Control
☐ Meander ☒ Property
☐ Rancho ☐ Other

Date of Survey 2022-03-09

N. _____ E. _____

Elevation _____

Units ☐ Metric ☐ U.S. Survey Foot

Horizontal Datum _____

Zone _____ Epoch Date _____

Vertical Datum _____

☐ Complies with Public Resources Code §§8801-8819

☐ Complies with Public Resources Code §§8890-8902

PLS Act Ref.: ☐ 8765(d) ☒ 8771 ☐ 8773 ☐ Other:

Corner/ ☒ Left as found ☐ Established ☐ Rebuilt ☒ Pre-Construction

Monument: ☐ Found and tagged ☐ Reestablished ☒ Referenced ☐ Post-Construction

Narrative of corner identified and monument as found, set, reset, replaced, or removed:

☐ See sheet #2 for description(s):

SURVEYOR'S STATEMENT

This Corner Record was prepared by me or under my direction in conformance with

the Professional Land Surveyors' Act on June 7, 2022

Signed [Signature] P.L.S. or R.C.E. No. 8040



COUNTY SURVEYOR'S STATEMENT

This Corner Record was received June 13, 2022

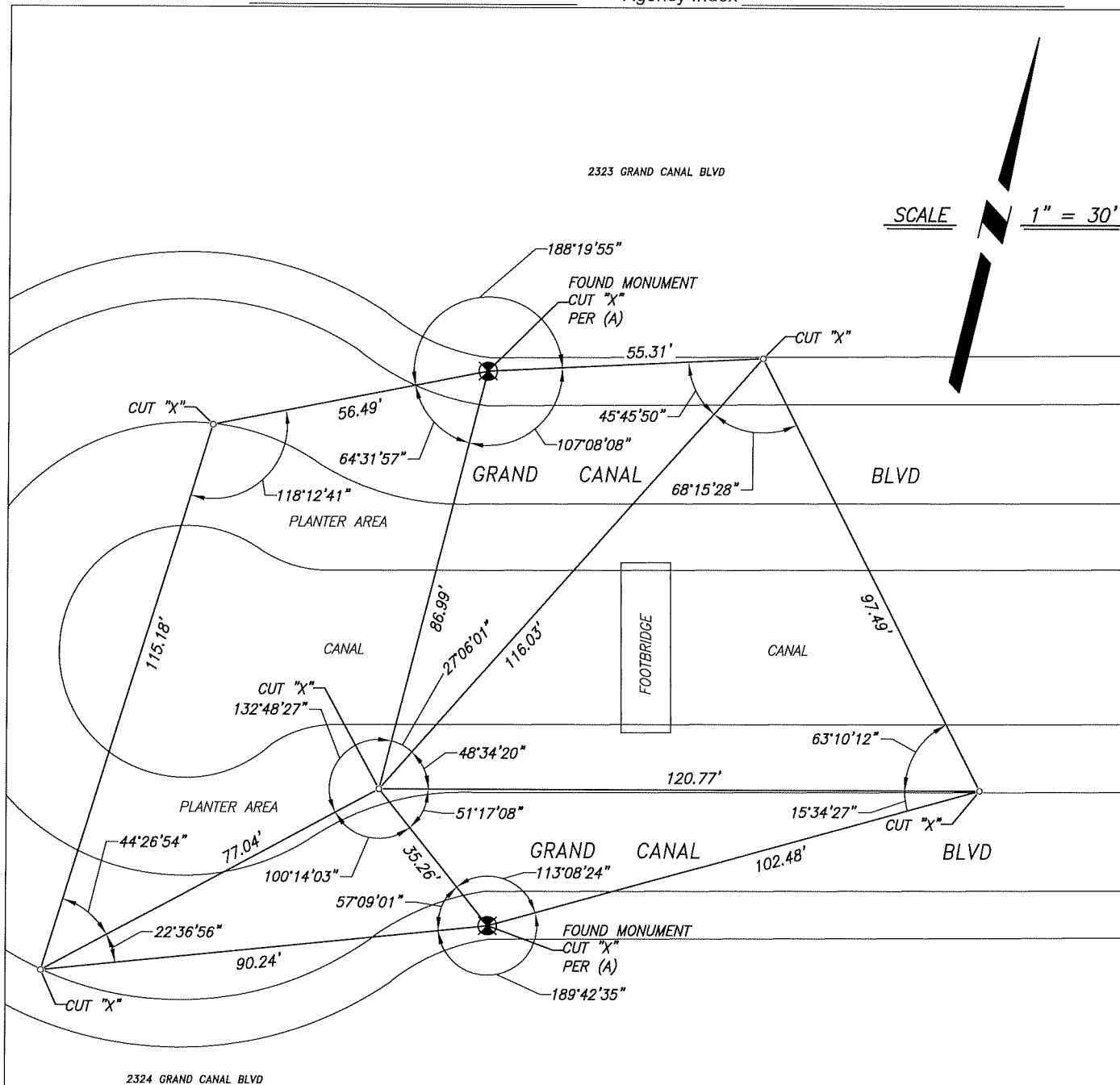
and examined and filed June 30, 2022

Signed James E. Hart P.L.S. or R.C.E. No. 8657

Title County Surveyor

County Surveyor's Comment





REFERENCE

(A) MAP OF VENETIAN BRIDGES, UNIT NO. 1, IN THE CITY OF STOCKTON,
FILED ON APRIL 25, 1978, IN VOLUME 23 OF MAPS AND PLATS, PAGE
50, SAN JOAQUIN COUNTY RECORDS.

LEGEND

- ⊗ FOUND MONUMENT, CUT "X" ON
CONCRETE SIDEWALK
- SET CUT "X" ON CONCRETE SIDEWALK
AS REFERENCE POINT

NOTES

1. ALL REFERENCES ARE SAN JOAQUIN COUNTY RECORDS