

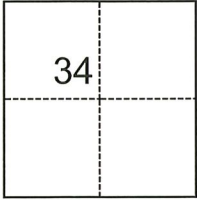
CORNER RECORD

Agency Index CR-22-151
Document Number _____

City of _____ County of SAN JOAQUIN, California
Brief Legal Description PARCEL "A", P.M. 15-89

CORNER TYPE

COORDINATES (Optional)



- Government Corner
- Meander
- Rancho
- Control
- Property
- Other

Date of Survey March 7, 2022

N. _____ E. _____
 Elevation _____
 Units Metric U.S. Survey Foot
 Horizontal Datum _____
 Zone _____ Epoch Date _____
 Vertical Datum _____
 Complies with Public Resources Code §§8801-8819
 Complies with Public Resources Code §§8890-8902

T.3N., R.7E., M.D.B.&M.

- PLS Act Ref.: 8765(d) 8771 8773 Other: _____
- Corner/Monument: Left as found Established Rebuilt Pre-Construction
 Found and tagged Reestablished Referenced Post-Construction

Narrative of corner identified and monument as found, set, reset, replaced, or removed:

See sheet #2 for description(s):

SURVEYOR'S STATEMENT

This Corner Record was prepared by me or under my direction in conformance with
 the Professional Land Surveyors' Act on April 11, 2022
 Signed Joe Murphy P.L.S. or R.C.E. No. 7269

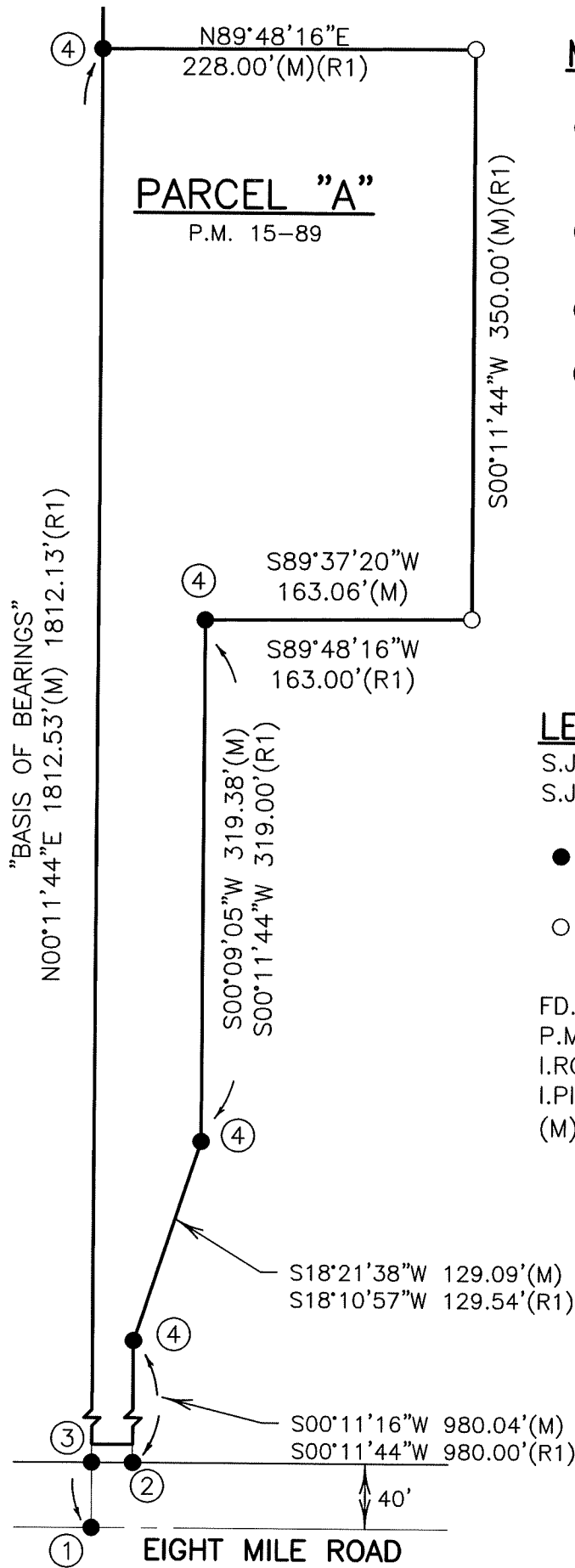


COUNTY SURVEYOR'S STATEMENT

This Corner Record was received April 12, 2022
 and examined and filed April 26, 2022
 Signed James E. Hart P.L.S. or R.C.E. No. 8657
 Title County Surveyor



County Surveyor's Comment



MONUMENTS

- ① FD. S.J.CO. BOLT&WASHER IN MONUMENT BOX @ SECTION CORNER(R1)
- ② FD. 3/4" I.ROD(NO TAG) (NO REFERENCE)
- ③ FD. 3/4" I.PIPE(R1)
- ④ FD. 3/4" I.ROD(R1) (NO TAG)

REFERENCE

(R1) P.M. 15-89, S.J.C.R.

LEGEND

- S.J.C.R. SAN JOAQUIN COUNTY RECORDS
- S.J.CO. SAN JOAQUIN COUNTY
- FD. MONUMENT AS NOTED
- SET 3/4" X 30" IRON ROD, CAPPED L.S. 7269
- FD. FOUND
- P.M. PARCEL MAP
- I.ROD IRON ROD
- I.PIPE IRON PIPE
- (M) MEASURED

