

CORNER RECORD

Agency Index CR-22-149

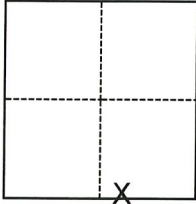
Document Number _____

City of Lodi County of San Joaquin, California

Brief Legal Description Property monuments at Lodi Avenue & Sunset Drive (M&P 11-34)

CORNER TYPE

COORDINATES (Optional)



- Government Corner
- Meander
- Rancho
- Control
- Property
- Other

N. _____ E. _____

Elevation _____

Units Metric U.S. Survey Foot

Horizontal Datum _____

Zone _____ Epoch Date _____

Vertical Datum _____

Complies with Public Resources Code §§8801-8819

Complies with Public Resources Code §§8890-8902

Date of Survey September 10, 2021

Section 2, T.3N., R.6E.
M.D.B.&M.

- PLS Act Ref.: 8765(d) 8771 8773 Other:
- Corner/Monument: Left as found Established Rebuilt Pre-Construction
- Found and tagged Reestablished Referenced Post-Construction

Narrative of corner identified and monument as found, set, reset, replaced, or removed:

See sheet #2 for description(s):

FOUND UNREFERENCED CHISELED CROSSES ON LOT LINE PROJECTION PER M&P 11-34. THE FOUND CHISELED CROSSES THAT WERE REMOVED DURING CONSTRUCTION WERE RESET AT THEIR ESTABLISHED LOCATION AFTER CONSTRUCTION. NO BOUNDARY ANALYSIS WAS PERFORMED.

SURVEYOR'S STATEMENT

This Corner Record was prepared by me or under my direction in conformance with

the Professional Land Surveyors' Act on 3/30/22

Signed [Signature] P.L.S. or R.C.E. No. 9478



COUNTY SURVEYOR'S STATEMENT

This Corner Record was received March 31, 2022

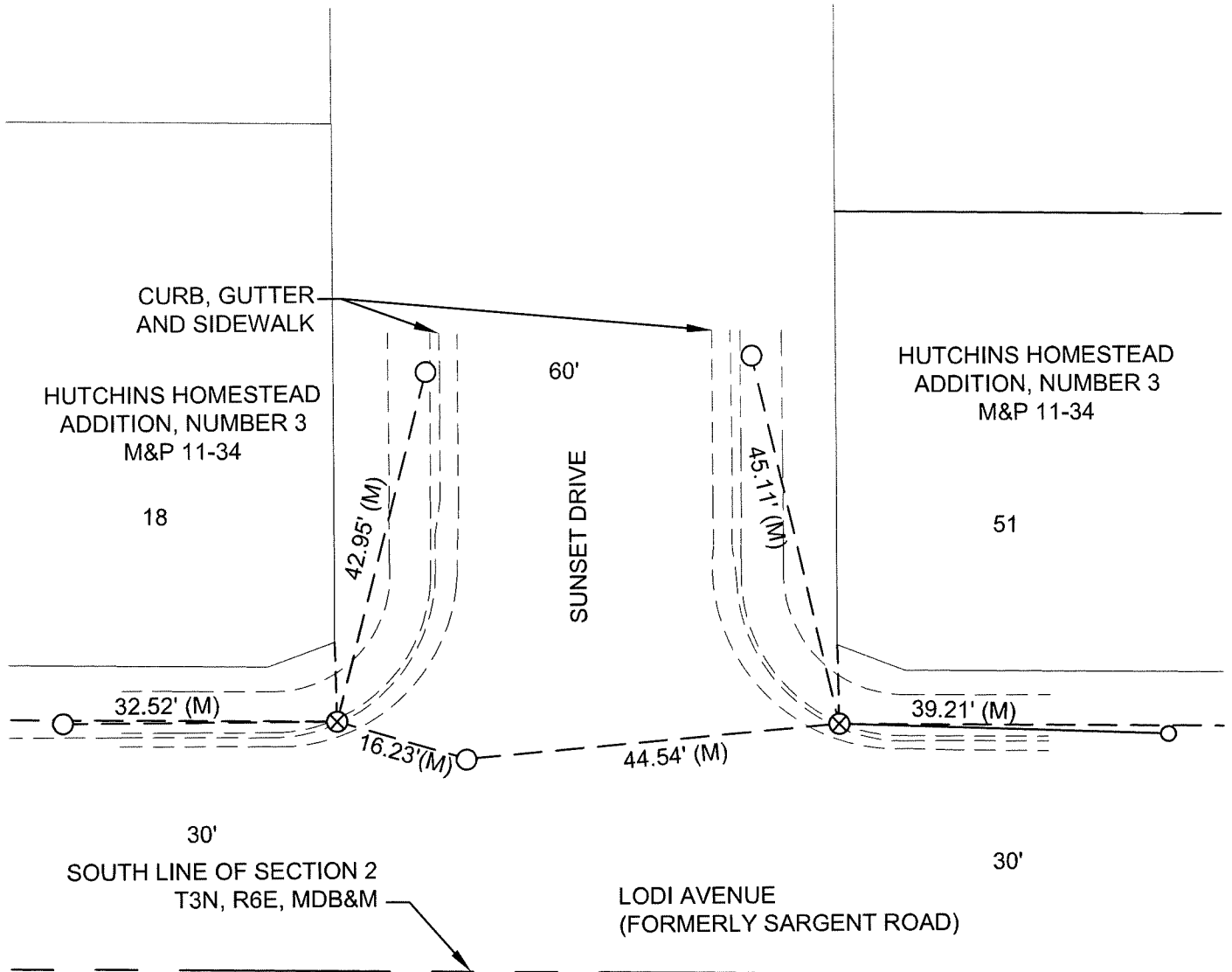
and examined and filed April 14, 2022

Signed James E. Hart P.L.S. or R.C.E. No. 8657

Title County Surveyor

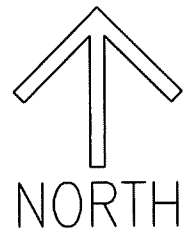
County Surveyor's Comment





LEGEND

- ⊗ SET CHISELED "X" WITH NAIL AND WASHER STAMPED "C.O.L. LS 9478"
- FOUND NAIL AND WASHER STAMPED "C.O.L. LS 9478"
- M&P MAPS & PLATS, VOLUME AND PAGE, SAN JOAQUIN COUNTY RECORDS
- (M) MEASURED ON THIS SURVEY
- MDB&M MOUNT DIABLO BASE & MERIDIAN



SCALE: 1"=20'