

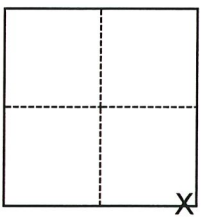
CORNER RECORD

Agency Index CR-22-144
Document Number _____

City of Lodi County of San Joaquin, California
Brief Legal Description Property monuments at Lodi Avenue (Hutchins Street-California Street)

CORNER TYPE

COORDINATES (Optional)



- Government Corner
- Meander
- Rancho
- Control
- Property
- Other

N. _____ E. _____
 Elevation _____
 Units Metric U.S. Survey Foot
 Horizontal Datum _____
 Zone _____ Epoch Date _____
 Vertical Datum _____
 Complies with Public Resources Code §§8801-8819
 Complies with Public Resources Code §§8890-8902

Date of Survey November 29, 2021

Section 2, T.3N.,R.6E. M.D.B.&M.

- PLS Act Ref.: 8765(d) 8771 8773 Other:
- Corner/Monument: Left as found Established Rebuilt Pre-Construction
 Found and tagged Reestablished Referenced Post-Construction

Narrative of corner identified and monument as found, set, reset, replaced, or removed:
 See sheet #2 for description(s):

FOUND SECTION CORNER, CHISELED PROPERTY CORNERS PER RS 5-125 AND RS 30-140 AND UNREFERENCED MONUMENTS NEAR LOT LINE PROJECTIONS. TWO BENCHMARKS AND PK-NAIL "D", OF NO RECORD, WERE REMOVED BY CONSTRUCTION AND WERE NOT REPLACED. NO BOUNDARY ANALYSIS WAS PERFORMED.

SURVEYOR'S STATEMENT

This Corner Record was prepared by me or under my direction in conformance with the Professional Land Surveyors' Act on 3/30/22.

Signed [Signature] P.L.S. or R.C.E. No. 9478



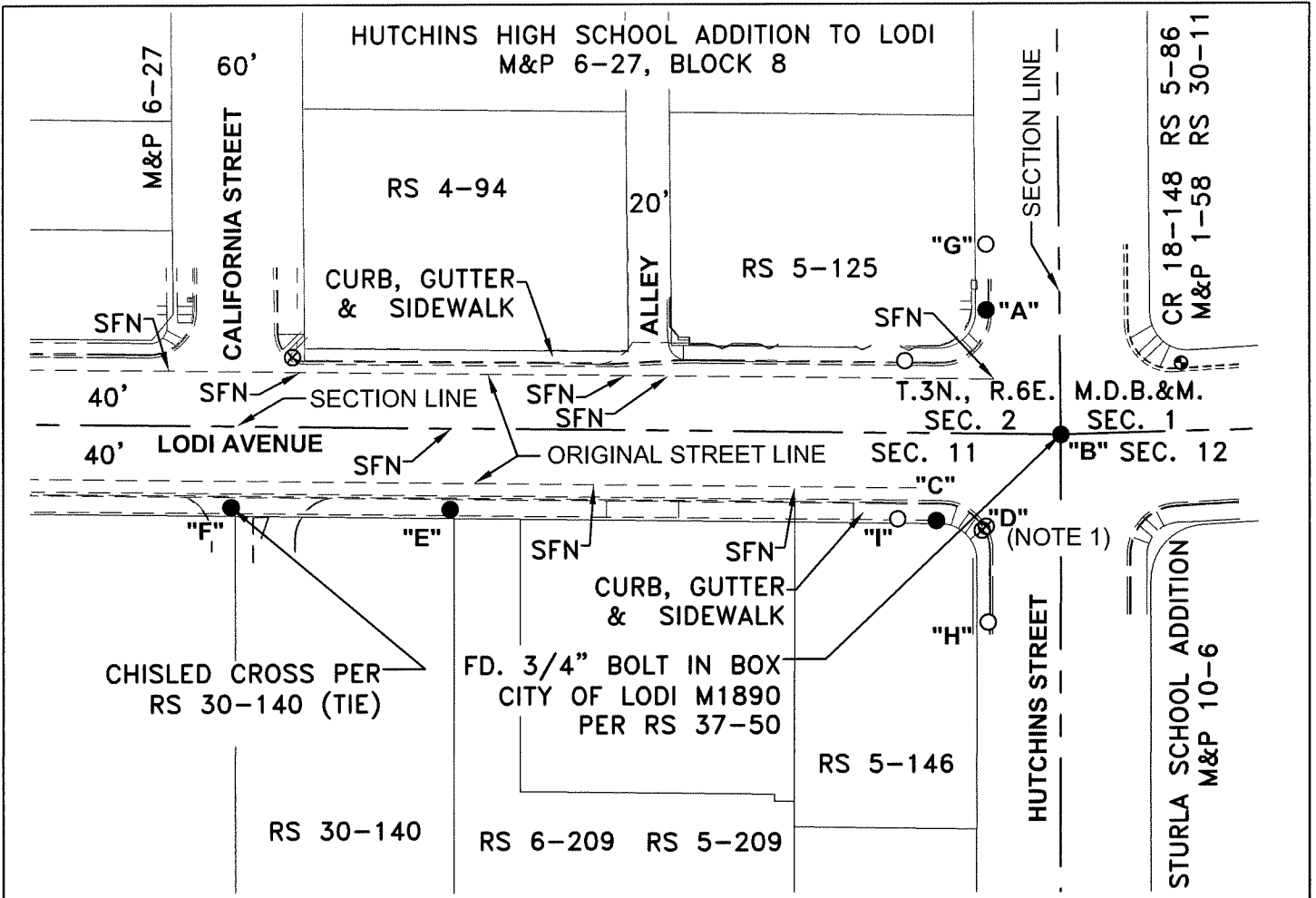
COUNTY SURVEYOR'S STATEMENT

This Corner Record was received March 31, 2022 and examined and filed April 14, 2022.

Signed James E. Hart P.L.S. or R.C.E. No. 8657
 Title County Surveyor



County Surveyor's Comment



| DISTANCE (M) TABLE | | | | | | | | | |
|--------------------|--------------------------|------|----------|-------|-----------|-------|-----------|-------|-----------|
| | FD. MONUMENT | FROM | DISTANCE | FROM2 | DISTANCE2 | FROM3 | DISTANCE3 | FROM4 | DISTANCE4 |
| "A" | CHIS. "+", NT, NR | "F" | 358.61' | "G" | 30.04' | "H" | 142.74' | "I" | 103.62' |
| "B" | SEE MAP ABOVE | "F" | 382.95' | "G" | 93.54' | "H" | 92.06' | "I" | 84.19' |
| "C" | IRON ROD, NT, NR | "F" | 324.48' | "G" | 128.21' | "H" | 52.31' | "I" | 17.81' |
| "D" | PK NAIL, NT, NR | "F" | 347.38' | "G" | 128.88' | "H" | 43.91' | "I" | 40.78' |
| "E" | CHIS. "+", NT, RS 30-140 | "F" | 100.70' | "G" | 274.43' | "H" | 252.89' | "I" | 205.99' |

LEGEND

- ⊗ MONUMENT REMOVED BY CONSTRUCTION AND NOT RE-SET
- FOUND MONUMENT AS NOTED
- FOUND NAIL & WASHER STAMPED "C.O.L. LS 9478" PER CR-21-100
- ⊙ FOUND CITY OF LODI BENCHMARK
- FD. FOUND ON THIS SURVEY
- CHIS. "+" CHISELED CROSS
- M&P MAPS & PLATS, VOLUME AND PAGE, S.J.C.R.
- RS RECORD OF SURVEY, BOOK AND PAGE, S.J.C.R.
- PM PARCEL MAP, BOOK AND PAGE, S.J.C.R.
- CR CORNER RECORD, SAN JOAQUIN COUNTY SURVEYOR'S RECORDS
- S.J.C.R. SAN JOAQUIN COUNTY RECORDS
- (M) MEASURED ON THIS SURVEY
- (NT, NR) NO TAG, NO RECORD (AS NOTED)
- SFN SEARCHED, FOUND NOTHING



NOTES

1. TWO MONUMENTS WERE REMOVED BY CONSTRUCTION AND NOT RESET: MONUMENT "D" AND A CITY OF LODI BENCHMARK.