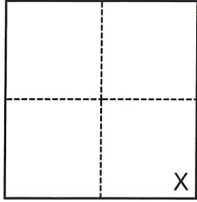


CORNER RECORD

Agency Index CR-22-140

Document Number _____

City of Lodi County of San Joaquin, CaliforniaBrief Legal Description Property corner along southerly line of Oak St., Lodi. (PM 23-173 & PM 25-83)**CORNER TYPE****COORDINATES (Optional)**

- Government Corner Control
 Meander Property
 Rancho Other

N. _____ E. _____

Elevation _____

Units Metric U.S. Survey Foot

Horizontal Datum _____

Zone _____ Epoch Date _____

Vertical Datum _____

 Complies with Public Resources Code §§8801-8819 Complies with Public Resources Code §§8890-8902Date of Survey December 9, 2021

Section 1, T.3N.,R.6E., M.D.B.&M

PLS Act Ref.:

 8765(d) 8771 8773 Other:Corner/
Monument: Left as found Established Rebuilt Pre-Construction Found and tagged Reestablished Referenced Post-Construction

Narrative of corner identified and monument as found, set, reset, replaced, or removed:

 See sheet #2 for description(s):

Found an untagged 3/4" iron pipe along south line of Oak Street as located on referenced maps. No attempt was made to verify the monument.

SURVEYOR'S STATEMENT

This Corner Record was prepared by me or under my direction in conformance with

the Professional Land Surveyors' Act on

2/20/22

Signed

P.L.S. or R.C.E. No.

9478**COUNTY SURVEYOR'S STATEMENT**

This Corner Record was received

March 31, 2022

and examined and filed

April 14, 2022

Signed

P.L.S. or R.C.E. No.

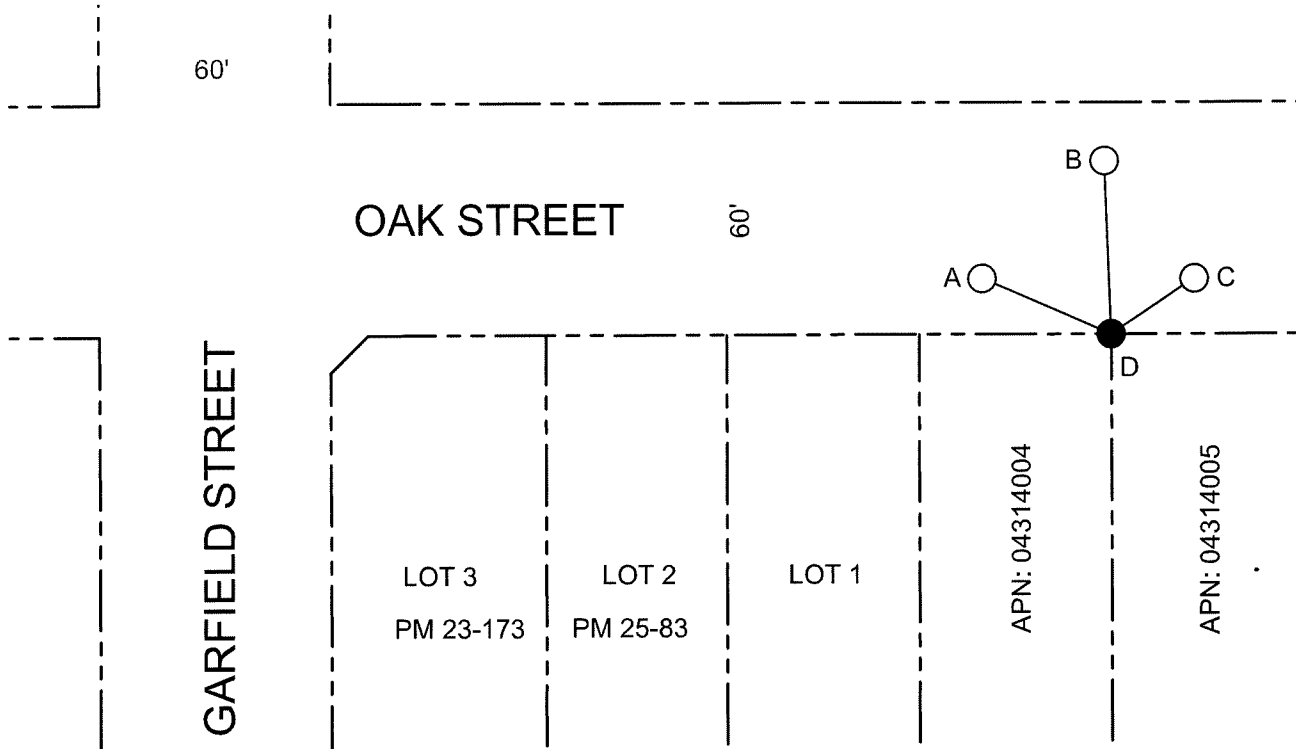
8657

Title

County Surveyor

County Surveyor's Comment





DISTANCE (M) TABLE			
	FND. MONUMENT	FROM	DISTANCE
"A"	NAIL & WASHER TAGGED "C.O.L. LS 9478"	\overline{AD}	36.59'
"B"	NAIL & WASHER TAGGED "C.O.L. LS 9478"	\overline{BD}	44.85'
"C"	NAIL & WASHER TAGGED "C.O.L. LS 9478"	\overline{CD}	25.93'
"D"	3/4" IRON PIPE, NT, (A)(B)		

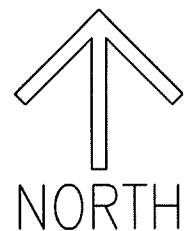
LEGEND

- FOUND MONUMENT AS NOTED
- SET NAIL & WASHER STAMPED "C.O.L. LS 9478"
- FND FOUND ON THIS SURVEY
- PM PARCEL MAP, BOOK AND PAGE, S.J.C.R.
- M&P MAP & PLATS, VOLUME AND PAGE, S.J.C.R.
- S.J.C.R. SAN JOAQUIN COUNTY RECORDS
- (M) MEASURED ON THIS SURVEY
- NT NO TAG

FOUND MONUMENT AS NOTED
 SET NAIL & WASHER STAMPED "C.O.L. LS 9478"
 FOUND ON THIS SURVEY
 PARCEL MAP, BOOK AND PAGE, S.J.C.R.
 MAP & PLATS, VOLUME AND PAGE, S.J.C.R.
 SAN JOAQUIN COUNTY RECORDS
 MEASURED ON THIS SURVEY
 NO TAG

REFERENCES

- (A) PM 23-173
- (B) PM 25-83



SCALE: 1"=50'
 021A012.DWG