

CORNER RECORD

Agency Index

CR-22-137

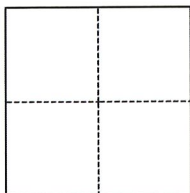
Document Number

City of STOCKTON

County of SAN JOAQUIN

, California

Brief Legal Description CUT "X" MONUMENT AT NW CORNER MINER AVE AND STANISLAUS ST.

CORNER TYPE

- | | |
|--|--|
| <input type="checkbox"/> Government Corner | <input type="checkbox"/> Control |
| <input type="checkbox"/> Meander | <input checked="" type="checkbox"/> Property |
| <input type="checkbox"/> Rancho | <input type="checkbox"/> Other |

Date of Survey 02/01/2022

COORDINATES (Optional)

N. _____ E. _____

Elevation _____

Units

☐ Metric☐ U.S. Survey Foot

Horizontal Datum _____

Zone _____

Epoch Date _____

Vertical Datum _____

☐ Complies with Public Resources Code §§8801-8819☐ Complies with Public Resources Code §§8890-8902

PLS Act Ref.:

☐ 8765(d)☒ 8771☐ 8773☐ Other:Corner/
Monument:☐ Left as found☐ Established☐ Rebuilt☐ Pre-Construction☐ Found and tagged☒ Reestablished☒ Referenced☒ Post-Construction

Narrative of corner identified and monument as found, set, reset, replaced, or removed:

☒ See sheet #2 for description(s):

SET A CUT CROSS IN THE CONCRETE SIDEWALK OF NORTHWEST CURB RETURN AT THE INTERSECTION OF MINER AVE AND STANISLAUS ST. OLD MONUMENT WAS REMOVED DURING CONSTRUCTION AND WAS RESET AT ITS ESTABLISHED LOCATION AFTER CONSTRUCTION USING THE FOUND FOUR (4) REFERENCE POINTS PER CR22-044 AS NOTED ON THE REVERSE.

SURVEYOR'S STATEMENT

This Corner Record was prepared by me or under my direction in conformance with

the Professional Land Surveyors' Act on MARCH 31, 2022

Signed

P.L.S. or R.C.E. No. 5837

**COUNTY SURVEYOR'S STATEMENT**

This Corner Record was received

April 4, 2022

and examined and filed

April 14, 2022

Signed

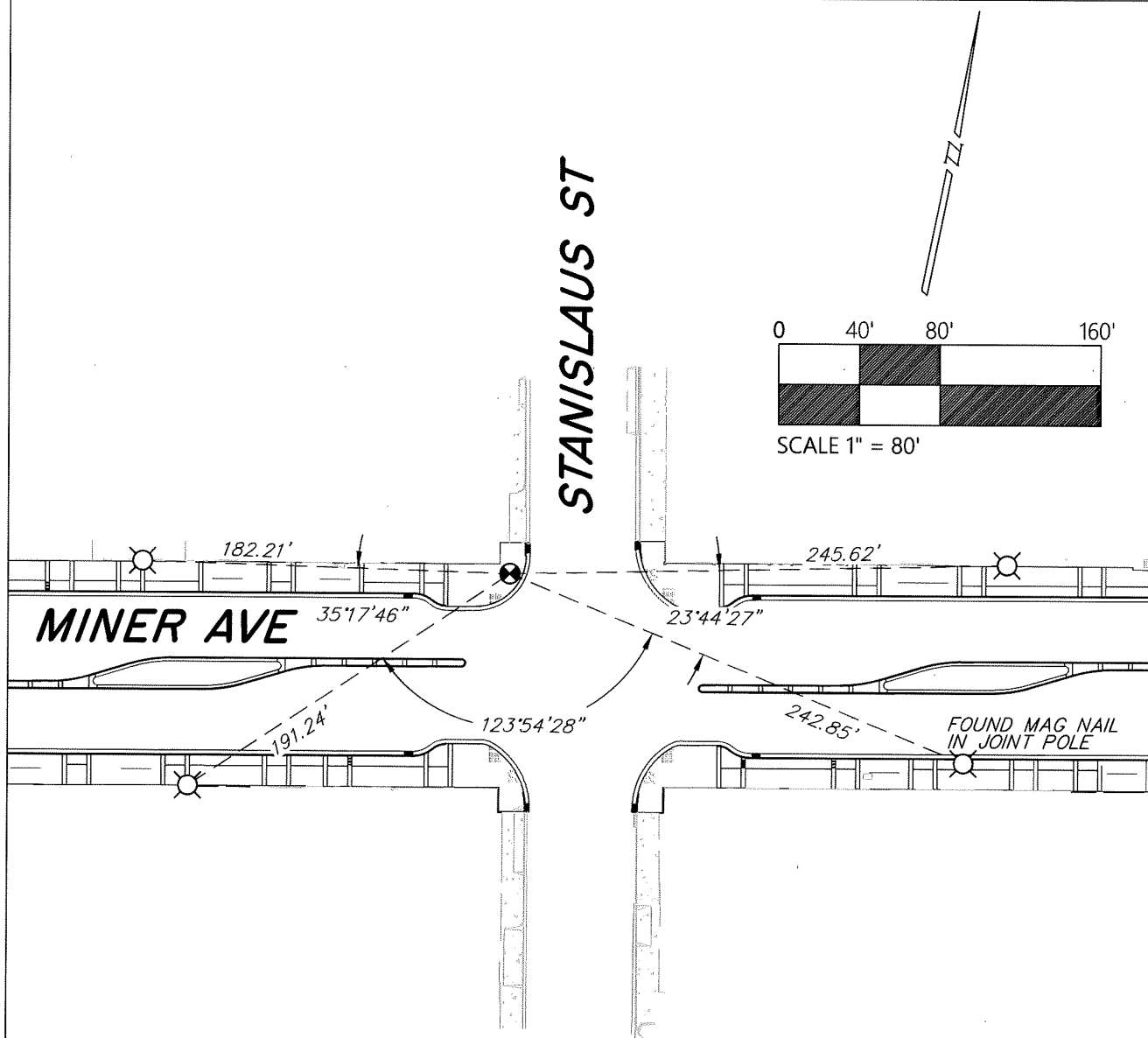
P.L.S. or R.C.E. No. 8657

Title

County Surveyor

County Surveyor's Comment





LEGEND

- ⊗ SET CUT "X" IN CONCRETE WALK
- ⊗ FOUND REFERENCE POINT, CUT "X" IN CONCRETE WALK UNLESS OTHERWISE NOTED.

NOTES

1. ALL DISTANCES AND ANGLES SHOWN ABOVE ARE BOTH MEASURED AND RECORD PER CR 22-044.
2. NOTE THAT BEARINGS SHOWN ARE FOR ANGULAR CONTROL FROM LOCAL CONSTRUCTION SURVEY DATA.