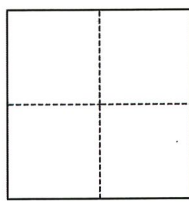


CORNER RECORD

Agency Index CR-22-133
Document Number _____

City of STOCKTON County of SAN JOAQUIN, California
Brief Legal Description CUT "X" MONUMENT AT NW CORNER MINER AVE AND HUNTER ST.



- CORNER TYPE**
- Government Corner Control
 Meander Property
 Rancho Other

Date of Survey 02/01/2022

- COORDINATES (Optional)**
- N. _____ E. _____
Elevation _____
Units Metric U.S. Survey Foot
Horizontal Datum _____
Zone _____ Epoch Date _____
Vertical Datum _____
 Complies with Public Resources Code §§8801-8819
 Complies with Public Resources Code §§8890-8902

- PLS Act Ref.: 8765(d) 8771 8773 Other:
- Corner/
Monument: Left as found Established Rebuilt Pre-Construction
 Found and tagged Reestablished Referenced Post-Construction

Narrative of corner identified and monument as found, set, reset, replaced, or removed:
 See sheet #2 for description(s):
SET A CUT CROSS IN THE CONCRETE SIDEWALK OF THE NORTHWEST CURB RETURN AT THE INTERSECTION OF MINER AVE AND HUNTER ST. OLD MONUMENT WAS REMOVED DURING CONSTRUCTION AND WAS RESET AT ITS ESTABLISHED LOCATION AFTER CONSTRUCTION USING THE FOUND FOUR (4) REFERENCE POINTS PER CR22-040 AS NOTED ON THE REVERSE.

SURVEYOR'S STATEMENT

This Corner Record was prepared by me or under my direction in conformance with
the Professional Land Surveyors' Act on MARCH 31, 2022
Signed *James N. Landrum* P.L.S. or R.C.E. No. 5837

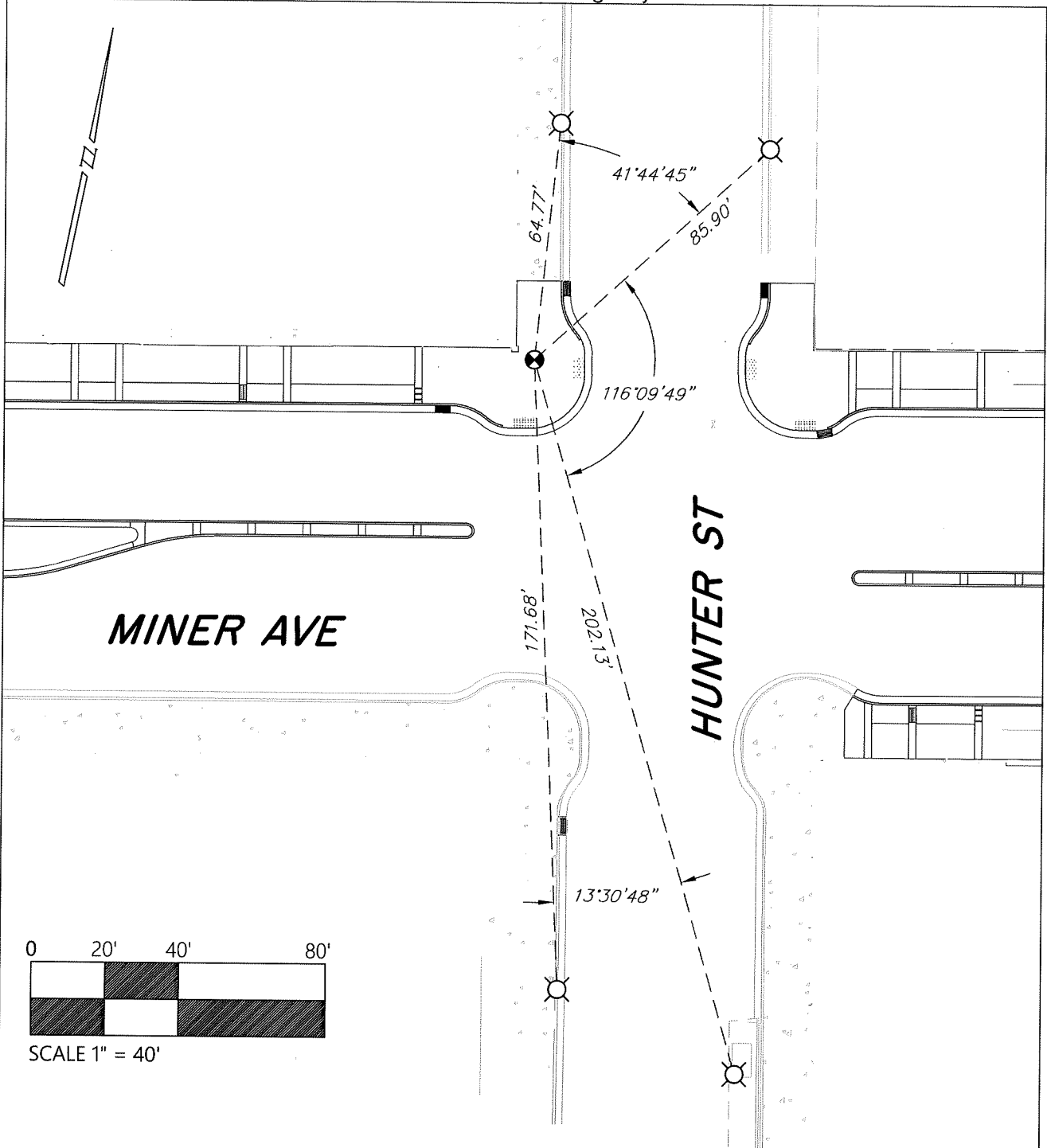


COUNTY SURVEYOR'S STATEMENT

This Corner Record was received April 4, 2022
and examined and filed April 14, 2022
Signed *James E. Hart* P.L.S. or R.C.E. No. 8657
Title County Surveyor



County Surveyor's Comment



LEGEND

- ⊗ SET CUT "X" IN CONCRETE WALK
- ⊗ FOUND REFERENCE POINT, CUT "X" IN CONCRETE CURB UNLESS OTHERWISE NOTED.

NOTES

1. ALL DISTANCES AND ANGLES SHOWN ABOVE ARE BOTH MEASURED AND RECORD PER CR 22-040.
2. NOTE THAT BEARINGS SHOWN ARE FOR ANGULAR CONTROL FROM LOCAL CONSTRUCTION SURVEY DATA.