

CORNER RECORD

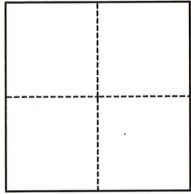
Agency Index CR-22-129
Document Number _____

City of STOCKTON County of SAN JOAQUIN, California

Brief Legal Description CUT "X" MONUMENT AT NW CORNER MINER AVE AND GRANT ST.

CORNER TYPE

COORDINATES (Optional)



- Government Corner
- Meander
- Rancho
- Control
- Property
- Other

Date of Survey 02/01/2022

N. _____ E. _____
 Elevation _____
 Units Metric U.S. Survey Foot
 Horizontal Datum _____
 Zone _____ Epoch Date _____
 Vertical Datum _____
 Complies with Public Resources Code §§8801-8819
 Complies with Public Resources Code §§8890-8902

PLS Act Ref.: 8765(d) 8771 8773 Other:
 Corner/Monument: Left as found Established Rebuilt Pre-Construction
 Found and tagged Reestablished Referenced Post-Construction

Narrative of corner identified and monument as found, set, reset, replaced, or removed:

See sheet #2 for description(s):

SET A CUT CROSS ON THE DRAIN COLLAR OF THE NORTHWEST CURB RETURN AT THE INTERSECTION OF MINER AVE AND GRANT ST. OLD MONUMENT WAS REMOVED DURING CONSTRUCTION AND WAS RESET AT ITS ESTABLISHED LOCATION AFTER CONSTRUCTION USING THE FOUND FOUR (4) REFERENCE POINTS PER CR22-036 AS NOTED ON THE REVERSE.

SURVEYOR'S STATEMENT

This Corner Record was prepared by me or under my direction in conformance with
 the Professional Land Surveyors' Act on MARCH 31, 2022
 Signed *James N. Landrum* P.L.S. or R.C.E. No. 5837

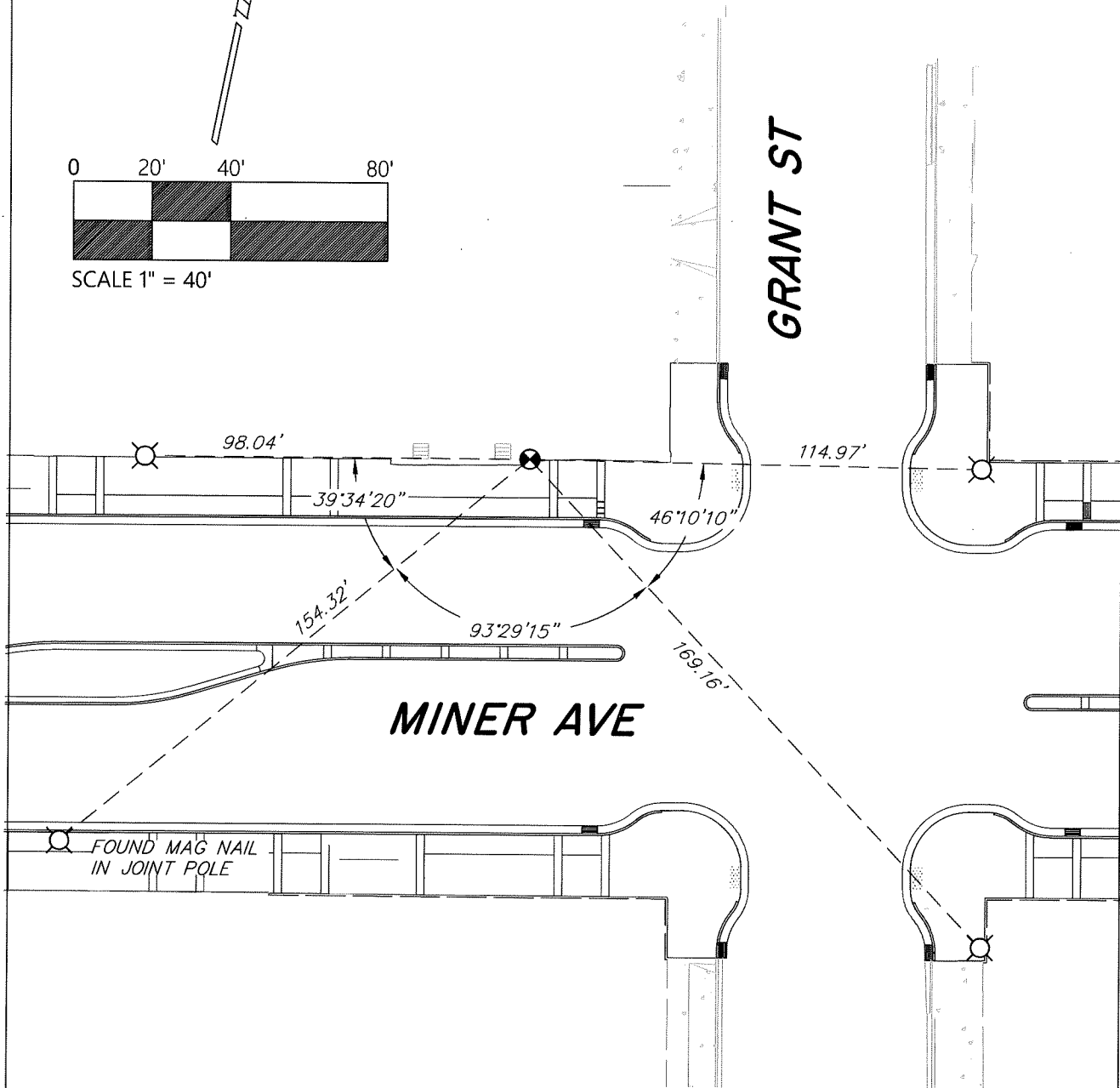
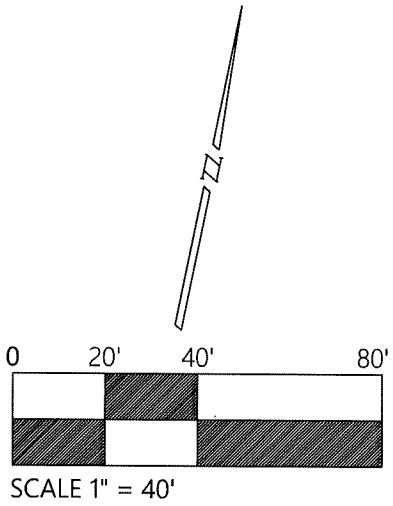


COUNTY SURVEYOR'S STATEMENT

This Corner Record was received April 4, 2022
 and examined and filed April 14, 2022
 Signed *James E. Hart* P.L.S. or R.C.E. No. 8657
 Title County Surveyor



County Surveyor's Comment



LEGEND

- SET CUT "X" ON DRAIN COLLAR
- ⊗ FOUND REFERENCE POINT, CUT "X" IN CONCRETE WALK UNLESS OTHERWISE NOTED.

NOTES

1. ALL DISTANCES AND ANGLES SHOWN ABOVE ARE BOTH MEASURED AND RECORD PER CR 22-036.
2. NOTE THAT BEARINGS SHOWN ARE FOR ANGULAR CONTROL FROM LOCAL CONSTRUCTION SURVEY DATA.