

CORNER RECORD

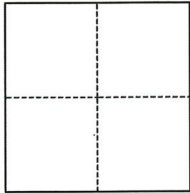
Agency Index CR-22-127
Document Number _____

City of STOCKTON County of SAN JOAQUIN, California

Brief Legal Description CUT "X" MONUMENT AT NW CORNER AT MINER AVE AND EL DORADO ST

CORNER TYPE

COORDINATES (Optional)



- Government Corner
- Meander
- Rancho
- Control
- Property
- Other

Date of Survey 02/01/2022

N. _____ E. _____

Elevation _____

Units Metric U.S. Survey Foot

Horizontal Datum _____

Zone _____ Epoch Date _____

Vertical Datum _____

Complies with Public Resources Code §§8801-8819

Complies with Public Resources Code §§8890-8902

PLS Act Ref.: 8765(d) 8771 8773 Other:

Corner/Monument: Left as found Established Rebuilt Pre-Construction

Found and tagged Reestablished Referenced Post-Construction

Narrative of corner identified and monument as found, set, reset, replaced, or removed:

See sheet #2 for description(s):

SET A CUT CROSS IN THE CONCRETE SIDEWALK OF THE NORTHWEST CURB RETURN AT THE INTERSECTION OF MINER AVE AND EL DORADO ST. OLD MONUMENT WAS REMOVED DURING CONSTRUCTION AND WAS RESET AT ITS ESTABLISHED LOCATION AFTER CONSTRUCTION USING THE FOUND FOUR (4) REFERENCE POINTS PER CR22-034 AS NOTED ON THE REVERSE.

SURVEYOR'S STATEMENT

This Corner Record was prepared by me or under my direction in conformance with the Professional Land Surveyors' Act on MARCH 31, 2022

Signed *James N. Landrum* P.L.S. or R.C.E. No. 5837



COUNTY SURVEYOR'S STATEMENT

This Corner Record was received April 4, 2022

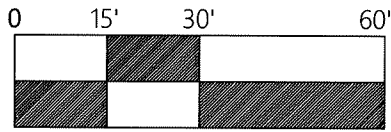
and examined and filed April 14, 2022

Signed *James E. Hart* P.L.S. or R.C.E. No. 8657

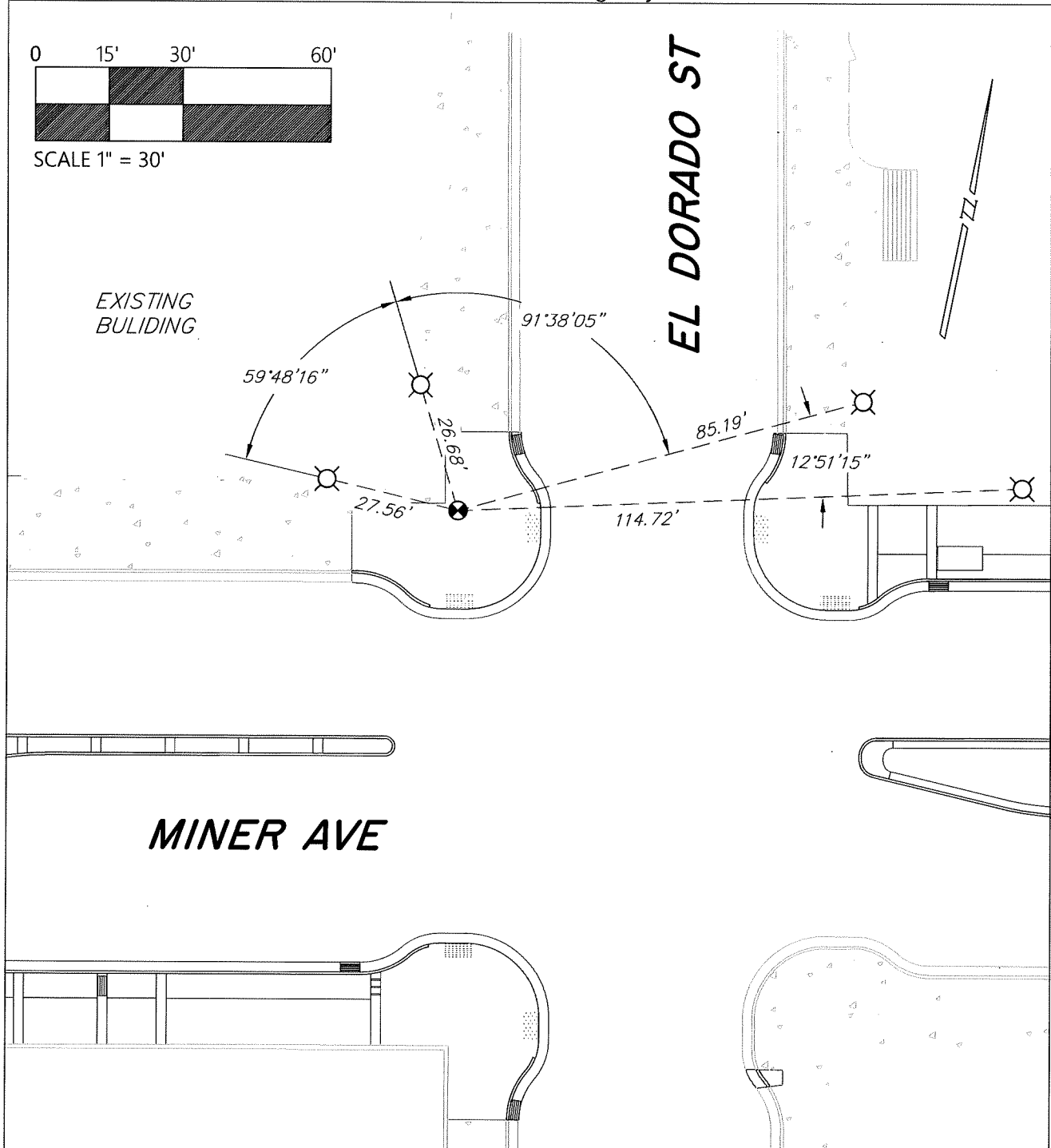
Title County Surveyor

County Surveyor's Comment







SCALE 1" = 30'



LEGEND

-  SET CUT "X" IN CONCRETE WALK
-  FOUND REFERENCE POINT, CUT "X" IN CONCRETE WALK UNLESS OTHERWISE NOTED.

NOTES

1. ALL DISTANCES AND ANGLES SHOWN ABOVE ARE BOTH MEASURED AND RECORD PER CR 22-034.
2. NOTE THAT BEARINGS SHOWN ARE FOR ANGULAR CONTROL FROM LOCAL CONSTRUCTION SURVEY DATA.