

# CORNER RECORD

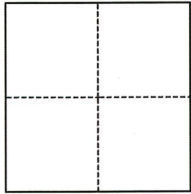
Agency Index

CR-22-126

Document Number

City of STOCKTONCounty of SAN JOAQUIN

, California

Brief Legal Description BRASS DISK AT NE CORNER MINER AVE AND AMERICAN ST**CORNER TYPE****COORDINATES (Optional)**

- |  |  |
|--|--|
| <input type="checkbox"/> Government Corner | <input type="checkbox"/> Control             |
| <input type="checkbox"/> Meander           | <input checked="" type="checkbox"/> Property |
| <input type="checkbox"/> Rancho            | <input type="checkbox"/> Other               |

Date of Survey 12/21/2021

N. \_\_\_\_\_ E. \_\_\_\_\_

Elevation \_\_\_\_\_

Units ☐ Metric ☐ U.S. Survey Foot

Horizontal Datum \_\_\_\_\_

Zone \_\_\_\_\_ Epoch Date \_\_\_\_\_

Vertical Datum \_\_\_\_\_

☐ Complies with Public Resources Code §§8801-8819☐ Complies with Public Resources Code §§8890-8902

PLS Act Ref.:

☐ 8765(d)☒ 8771☐ 8773☐ Other:Corner/  
Monument:☐ Left as found☐ Established☐ Rebuilt☐ Pre-Construction☐ Found and tagged☒ Reestablished☒ Referenced☒ Post-Construction

Narrative of corner identified and monument as found, set, reset, replaced, or removed:

☒ See sheet #2 for description(s):

SET A TWO INCH BRASS DISK WITH PUNCH IN MONUMENT WELL AT THE INTERSECTION OF MINER AVE AND CALIFORNIA ST. OLD MONUMENT WAS REMOVED DURING CONSTRUCTION AND WAS RESET AT ITS ESTABLISHED LOCATION AFTER CONSTRUCTION USING THE FOUND FOUR (4) REFERENCE POINTS PER CR22-033 AS NOTED ON THE REVERSE.

**SURVEYOR'S STATEMENT**

This Corner Record was prepared by me or under my direction in conformance with

the Professional Land Surveyors' Act on MARCH 31, 2022Signed James N. Landrum P.L.S. or R.C.E. No. 5837**COUNTY SURVEYOR'S STATEMENT**

This Corner Record was received

April 4, 2022

and examined and filed

April 14, 2022

Signed

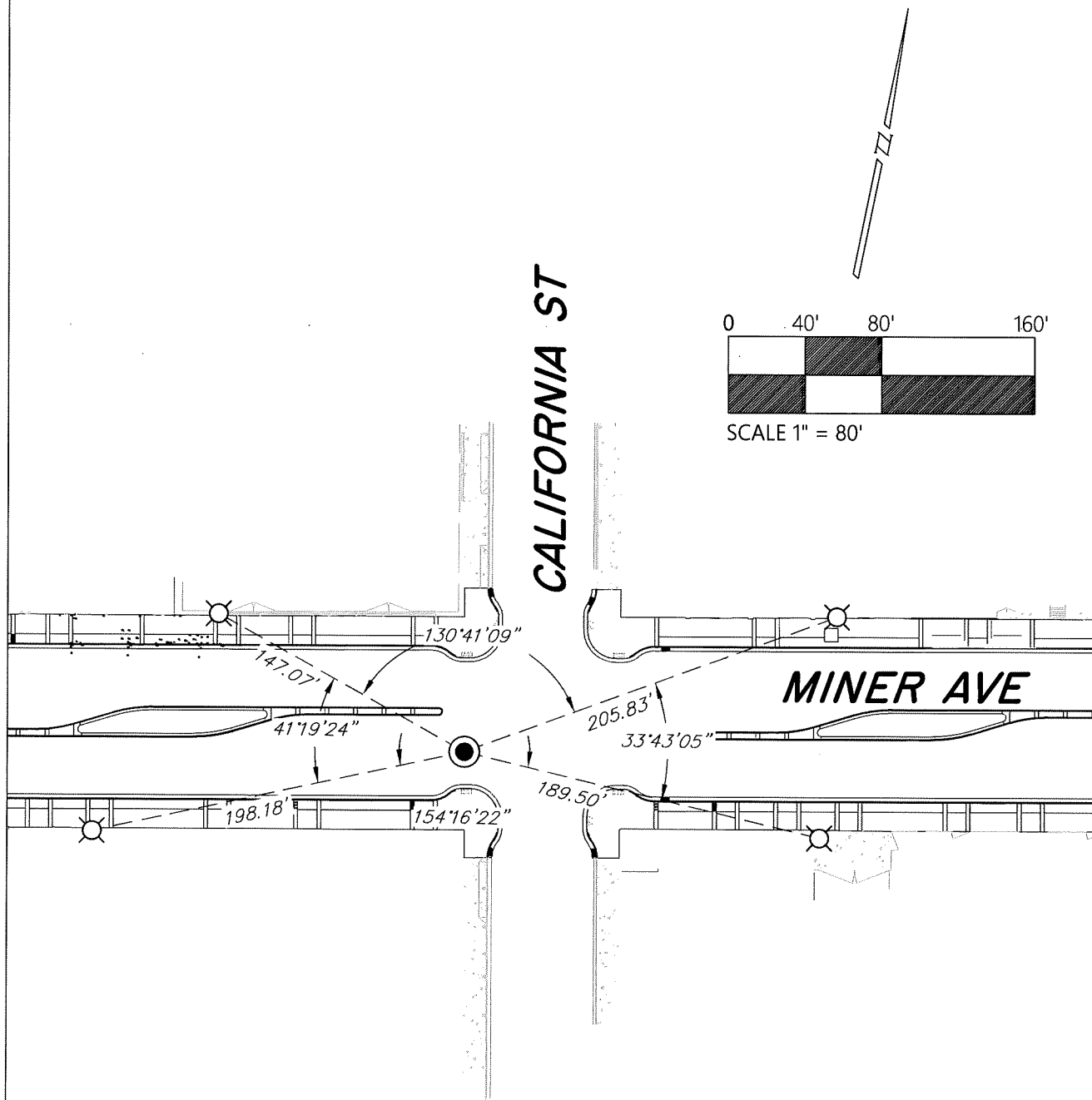
James E. HartP.L.S. or R.C.E. No. 8657

Title

County Surveyor

County Surveyor's Comment





## LEGEND

- SET 2" BRASS DISK IN MON WELL
- ⊗ FOUND REFERENCE POINT,  
CUT "X" IN CONCRETE WALK  
UNLESS OTHERWISE NOTED.

## NOTES

1. ALL DISTANCES AND ANGLES SHOWN ABOVE ARE BOTH MEASURED AND RECORD PER CR 22-033.
2. NOTE THAT BEARINGS SHOWN ARE FOR ANGULAR CONTROL FROM LOCAL CONSTRUCTION SURVEY DATA.