

# CORNER RECORD

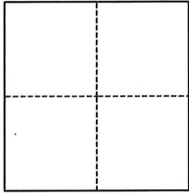
Agency Index CR-22-123  
Document Number \_\_\_\_\_

City of STOCKTON County of SAN JOAQUIN, California

Brief Legal Description CUT "X" MONUMENT AT NE CORNER MINER AVE AND AMERICAN ST

### CORNER TYPE

### COORDINATES (Optional)



- Government Corner
- Meander
- Rancho
- Control
- Property
- Other

Date of Survey 02/01/2022

N. \_\_\_\_\_ E. \_\_\_\_\_

Elevation \_\_\_\_\_

Units  Metric  U.S. Survey Foot

Horizontal Datum \_\_\_\_\_

Zone \_\_\_\_\_ Epoch Date \_\_\_\_\_

Vertical Datum \_\_\_\_\_

Complies with Public Resources Code §§8801-8819

Complies with Public Resources Code §§8890-8902

PLS Act Ref.:  8765(d)  8771  8773  Other:

Corner/Monument:  Left as found  Established  Rebuilt  Pre-Construction

Found and tagged  Reestablished  Referenced  Post-Construction

Narrative of corner identified and monument as found, set, reset, replaced, or removed:

See sheet #2 for description(s):

*SET A CUT CROSS IN THE SIDEWALK OF NORTHEAST CURB RETURN AT THE INTERSECTION OF MINER AVE AND AMERICAN ST. OLD MONUMENT WAS REMOVED DURING CONSTRUCTION AND WAS RESET AT ITS ESTABLISHED LOCATION AFTER CONSTRUCTION USING THE FOUND FOUR (4) REFERENCE POINTS PER CR22-030 AS NOTED ON THE REVERSE.*

### SURVEYOR'S STATEMENT

This Corner Record was prepared by me or under my direction in conformance with

the Professional Land Surveyors' Act on MARCH 31, 2022

Signed *James N. Landrum* P.L.S. or R.C.E. No. 5837



### COUNTY SURVEYOR'S STATEMENT

This Corner Record was received April 4, 2022

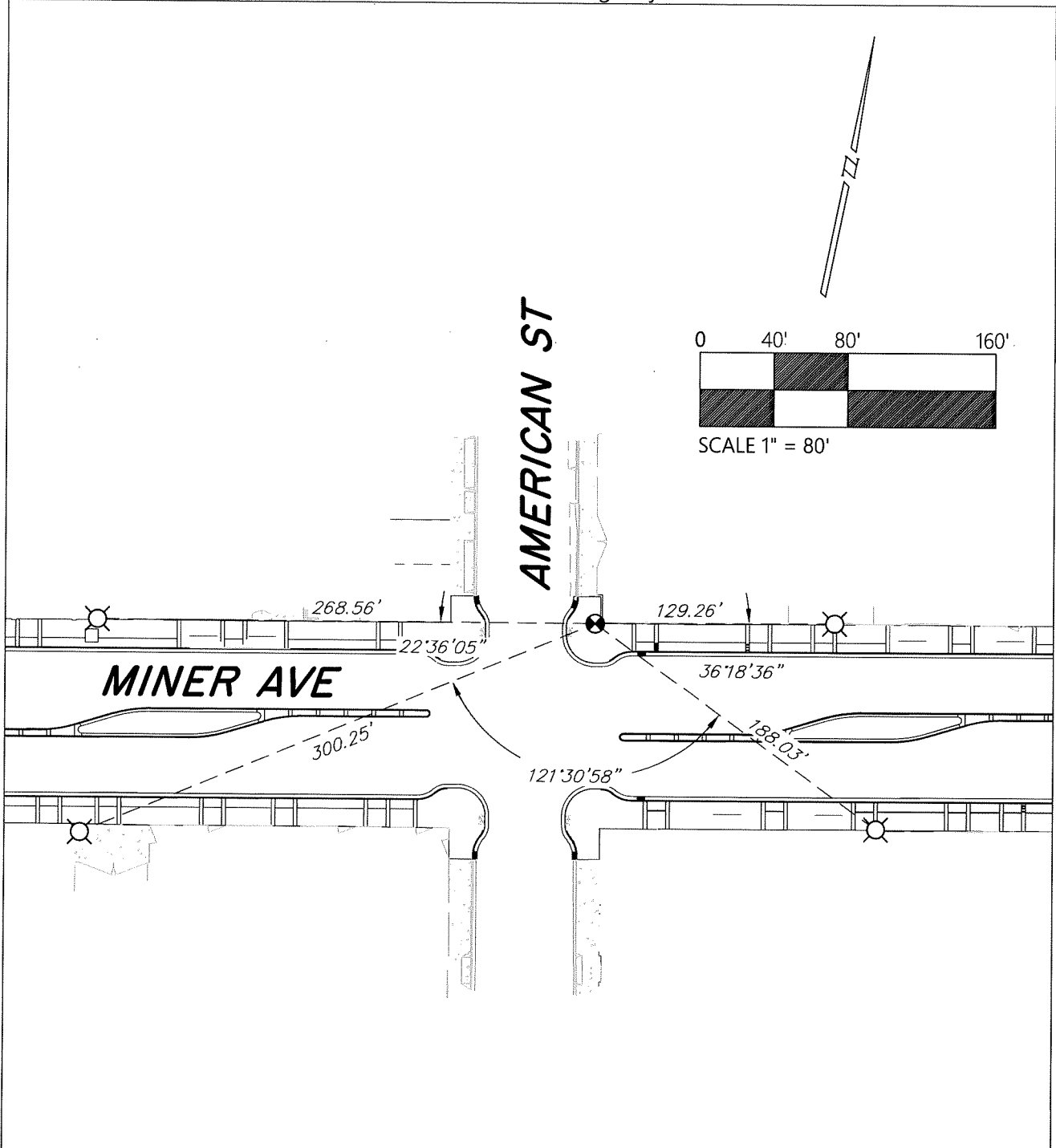
and examined and filed April 14, 2022

Signed *James E. Hart* P.L.S. or R.C.E. No. 8657

Title County Surveyor

County Surveyor's Comment





**LEGEND**

- ⊗ SET CUT "X" IN CONCRETE WALK
- ⊗ FOUND REFERENCE POINT, CUT "X" IN CONCRETE WALK UNLESS OTHERWISE NOTED.

**NOTES**

1. ALL DISTANCES AND ANGLES SHOWN ABOVE ARE BOTH MEASURED AND RECORD PER CR 22-030.
2. NOTE THAT BEARINGS SHOWN ARE FOR ANGULAR CONTROL FROM LOCAL CONSTRUCTION SURVEY DATA.