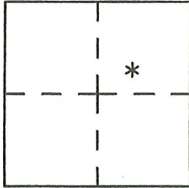


CORNER RECORD

Agency Index CR-22-117

Document Number _____

City of Ripon County of San Joaquin, CaliforniaBrief Legal Description Front corners of parcel I.N. 92062308 (39 R.S. 11)**CORNER TYPE****COORDINATES (Optional)**
 Government Corner Control
 Meander Property
 Rancho Other

N. _____ E. _____

Elevation. _____

Units Metric U.S. Survey Foot

Horizontal Datum _____

Zone _____ Epoch Date _____

Date of Survey April 8, 2020

Vertical Datum _____

 Complies with Public Resources Code §§8801-8819 Complies with Public Resources Code §§8890-8902S.30 T.2S.,R8E
M.D.M.PLS Act Ref.: 8765(d) 8771 8773 Other:Corner/Monument: Left as found Established Rebuilt Pre-Construction Found and tagged Reestablished Referenced Post-Construction

Narrative of corner identified and monument as found, set, reset, replaced, or removed:

 See sheet #2 for description(s):

I reset two corners that were found on Record of Survey Filed in Book 39, Page 11. One of the corners fell 0.15 feet into the exterior foundation of a building. A witness corner was set at right angle to the true location.

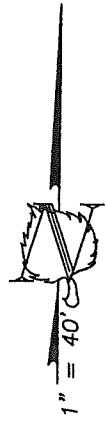
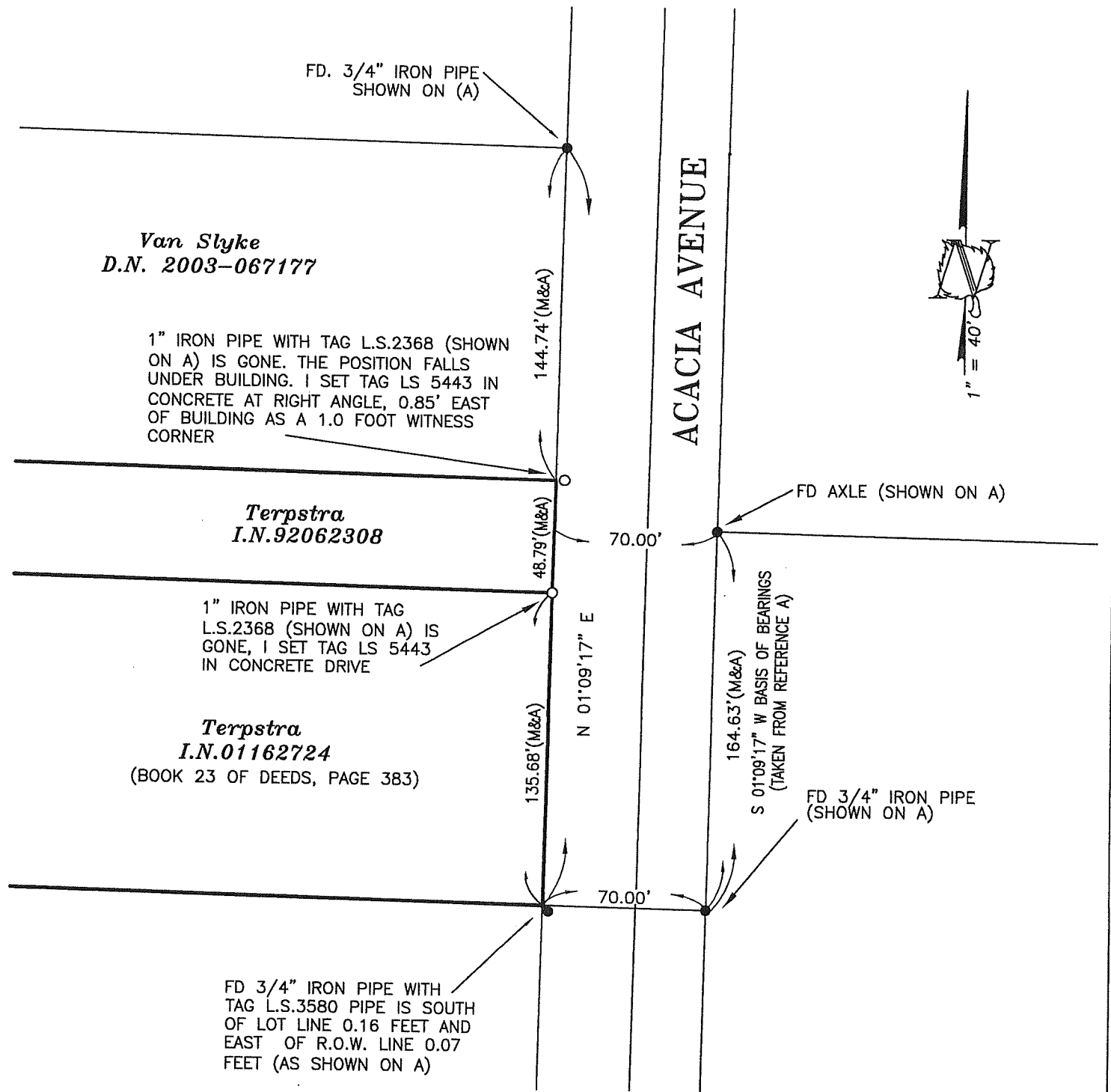
SURVEYOR'S STATEMENT

This Corner Record was prepared by me or under my direction in conformance with

the Professional Land Surveyor's Act on April 13, 2020Signed Del L. Harris P.L.S. or R.C.E. No. PLS 5443**COUNTY SURVEYOR'S STATEMENT**This Corner Record was received March 16, 2022and examined and filed April 4, 2022Signed James E. Hart P.L.S. or R.C.E. No. 8657Title County Surveyor

County Surveyor's Comment _____





THE PURPOSE OF THIS CORNER RECORD IS TO RESET TWO CORNERS PREVIOUSLY FOUND ON 39 RS 11, THAT WERE ACCIDENTLY REMOVED DURING SITE IMPROVEMENTS. I USED INFORMATION FROM MY PREVIOUS RECORD OF SURVEY FILED IN BOOK 39 OF SURVEYS, PAGE 11, SAN JOAQUIN COUNTY RECORDS, TO RESET THE TWO POSITIONS, ONE BY WITNESS CORNER.

(A) BOOK 39 OF RECORD OF SURVEYS, PAGE 11 (BOB) BASIS OF BEARINGS PER REF.(A)
 ALL REFERENCES ARE SAN JOAQUIN COUNTY RESORDS

- FOUND MONUMENT AS NOTED ON (A)
- SET CONCRETE NAIL AND METAL TAG L.S.5443