

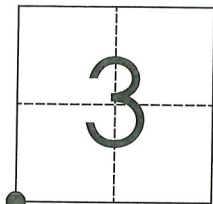
CORNER RECORD

Agency Index CR-22-113
 Document Number _____

City of _____ County of San Joaquin, California
 Brief Legal Description Holt Road @ McDonald Road

CORNER TYPE

COORDINATES (Optional)



T1N R5E
 MDB&M

Government Corner Control
 Meander Property
 Rancho Other

N. _____ E. _____

Elevation. _____

Units Metric U.S. Survey Foot

Horizontal Datum _____

Zone _____ Epoch Date _____

Date of Survey February 24, 2021

Vertical Datum _____

Complies with Public Resources Code §§8801-8819

Complies with Public Resources Code §§8890-8902

PLS Act Ref.: 8765(d) 8771 8773 Other:

Corner/Monument: Left as found Established Rebuilt Pre-Construction

Found and tagged Reestablished Referenced Post-Construction

Narrative of corner identified and monument as found, set, reset, replaced, or removed:

See sheet #2 for description(s):

SURVEYOR'S STATEMENT

This Corner Record was prepared by me or under my direction in conformance with
 the Professional Land Surveyor's Act on March 10, 2021

Signed James E. Hart P.L.S. or R.C.E. No. 8657



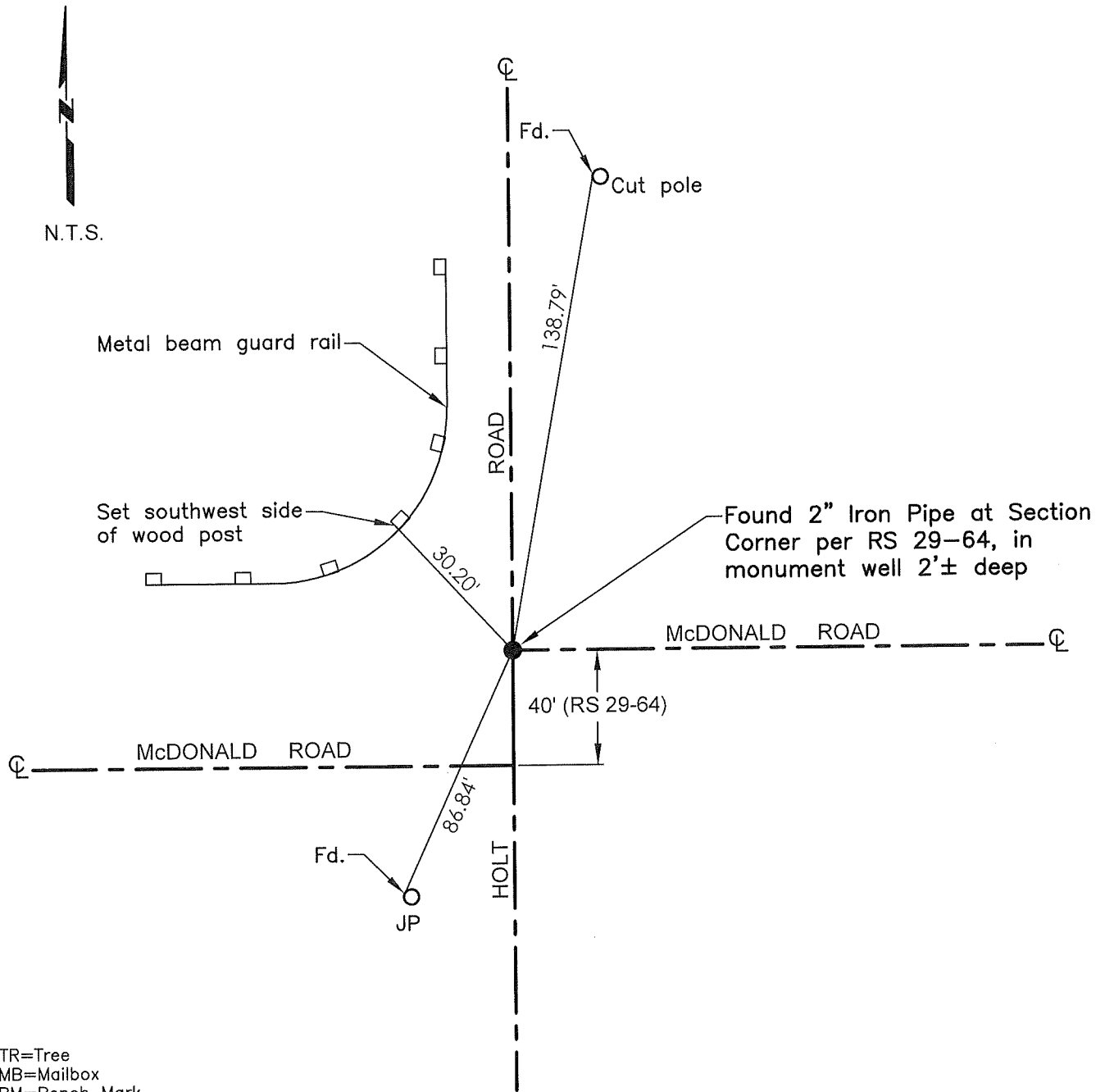
COUNTY SURVEYOR'S STATEMENT

This Corner Record was received February 2, 2022
 and examined and filed March 1, 2022

Signed James E. Hart P.L.S. or R.C.E. No. 8657
 Title County Surveyor

County Surveyor's Comment





N.T.S.

Metal beam guard rail

Set southwest side of wood post

30.20'

ROAD

HOLT

McDONALD ROAD

McDONALD ROAD

40' (RS 29-64)

Found 2" Iron Pipe at Section Corner per RS 29-64, in monument well 2'± deep

⊕

⊕

⊕

⊕

⊕

⊕

⊕

⊕

⊕

- TR=Tree
- MB=Mailbox
- BM=Bench Mark
- EP=Edge of Pavement
- YL=Yellow Line
- FH=Fire Hydrant
- CR=Corner Record
- FP=Fence Post
- JP=Joint Pole
- LP=Light Pole
- PP=Power Pole
- GP=Guy Pole
- SP=Service Pole
- TP=Telephone Pole
- S.F.N.=Searched Found Nothing
- N.T.S.=Not To Scale
- M&P=Maps & Plats
- PM=Parcel Map
- RS=Record of Survey
- FB=Field Book
- N=North
- SDI=Storm Drain Inlet
- TOC=Top of Curb
- PCC=Portland Cement Concrete

Set=Conc. Nail with Brass Washer stamped "S.J. Co.", unless otherwise noted
 Fd.=Found Conc. Nail with Brass Washer stamped "S.J. Co.", unless otherwise noted
 Note: Found Monuments are not tagged unless otherwise noted.

"No attempt was made to verify the Monument(s)"