

# CORNER RECORD

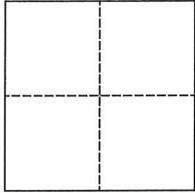
Agency Index CR-22-088  
 Document Number \_\_\_\_\_

City of \_\_\_\_\_ County of San Joaquin, California

Brief Legal Description Sargent Road 576'± west of Davis Road  
on the south line of Section 5, T3N, R6E, Mount Diablo Base & Meridian

**CORNER TYPE**

**COORDINATES (Optional)**



Government Corner  Control   
 Meander  Property   
 Rancho  Other

N. \_\_\_\_\_ E. \_\_\_\_\_

Elevation. \_\_\_\_\_

Units Metric  U.S. Survey Foot

Horizontal Datum \_\_\_\_\_

Zone \_\_\_\_\_ Epoch Date \_\_\_\_\_

Date of Survey October 22, 2021

Vertical Datum \_\_\_\_\_

Complies with Public Resources Code §§8801-8819

Complies with Public Resources Code §§8890-8902

PLS Act Ref.:  8765(d)  8771  8773  Other:

Corner/Monument:  Left as found  Established  Rebuilt  Pre-Construction

Found and tagged  Reestablished  Referenced  Post-Construction

Narrative of corner identified and monument as found, set, reset, replaced, or removed:

See sheet #2 for description(s):

**SURVEYOR'S STATEMENT**

This Corner Record was prepared by me or under my direction in conformance with  
 the Professional Land Surveyor's Act on November 29, 2021

Signed James E. Hart P.L.S. or R.C.E. No. 8657



**COUNTY SURVEYOR'S STATEMENT**

This Corner Record was received January 4, 2022

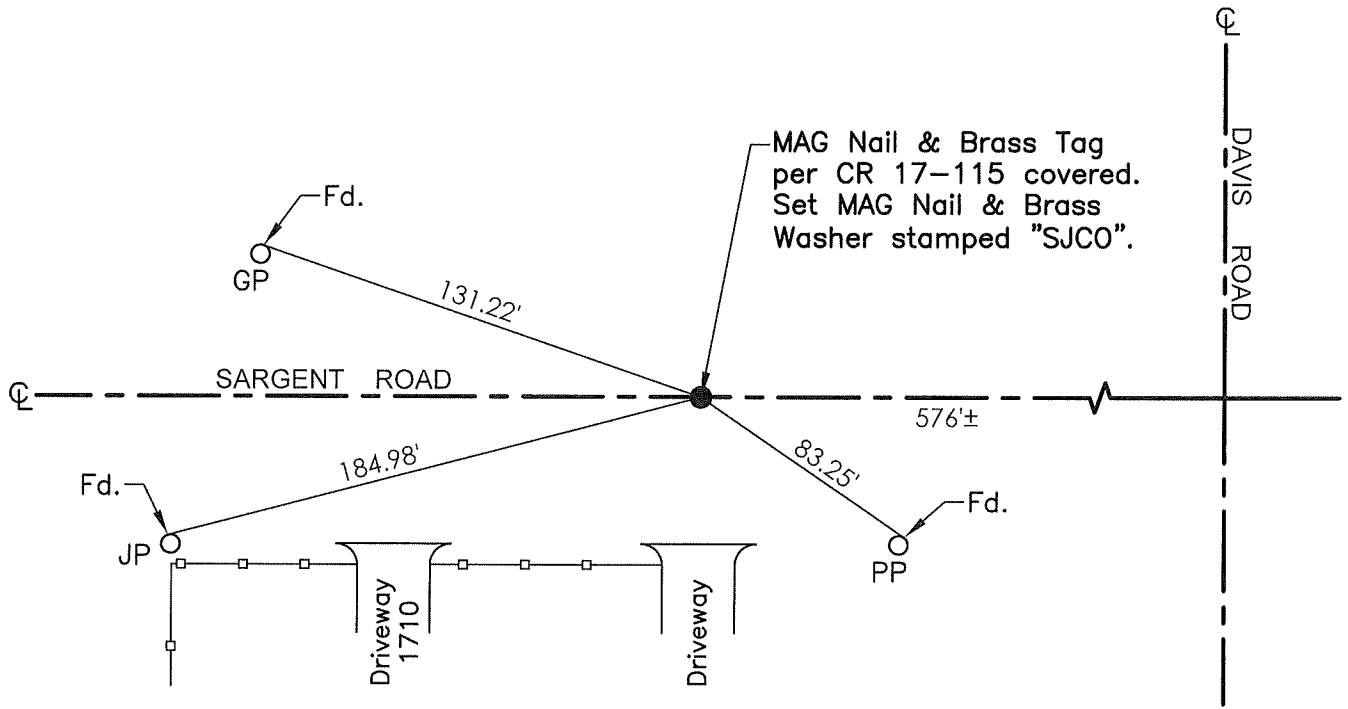
and examined and filed January 27, 2022

Signed James E. Hart P.L.S. or R.C.E. No. 8657

Title \_\_\_\_\_ County Surveyor

County Surveyor's Comment





- TR=Tree
- MB=Mailbox
- BM=Bench Mark
- EP=Edge of Pavement
- YL=Yellow Line
- FH=Fire Hydrant
- CR=Corner Record
- FP=Fence Post
- JP=Joint Pole
- LP=Light Pole
- PP=Power Pole
- GP=Guy Pole
- SP=Service Pole
- TP=Telephone Pole
- S.F.N.=Searched Found Nothing
- N.T.S.=Not To Scale
- M&P=Maps & Plats
- PM=Parcel Map
- RS=Record of Survey
- FB=Field Book
- N=North
- SDI=Storm Drain Inlet
- TOC=Top of Curb
- PCC=Portland Cement Concrete

Set=Conc. Nail with Brass Washer stamped "S.J. Co.", unless otherwise noted  
 Fd.=Found Conc. Nail with Brass Washer stamped "S.J. Co.", unless otherwise noted  
 Note: Found Monuments are not tagged unless otherwise noted.

"No attempt was made to verify the Monument(s)"