

CORNER RECORD

Agency Index

CR-22-085

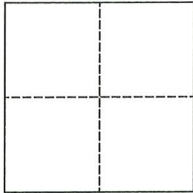
Document Number

City of _____ County of San Joaquin, CaliforniaBrief Legal Description Sargent Road 1909'± west of Davis Road

On the south line of Section 5, T3N, R6E, Mount Diablo Base & Meridian

CORNER TYPE

COORDINATES (Optional)



Government Corner ☐ Control ☐
Meander ☐ Property ☐
Rancho ☐ Other ☒

N. _____ E. _____
Elevation. _____Units Metric ☐ U.S. Survey Foot ☒

Horizontal Datum _____

Zone _____ Epoch Date _____

Date of Survey August 3, 2021

Vertical Datum _____

☐ Complies with Public Resources Code §§8801-8819☐ Complies with Public Resources Code §§8890-8902

PLS Act Ref.:

☐ 8765(d)☒ 8771☐ 8773☐ Other:Corner/
Monument:☒ Left as found☐ Established☐ Rebuilt☒ Pre-Construction☐ Found and tagged☐ Reestablished☐ Referenced☐ Post-Construction

Narrative of corner identified and monument as found, set, reset, replaced, or removed:

☒ See sheet #2 for description(s):

SURVEYOR'S STATEMENT

This Corner Record was prepared by me or under my direction in conformance with

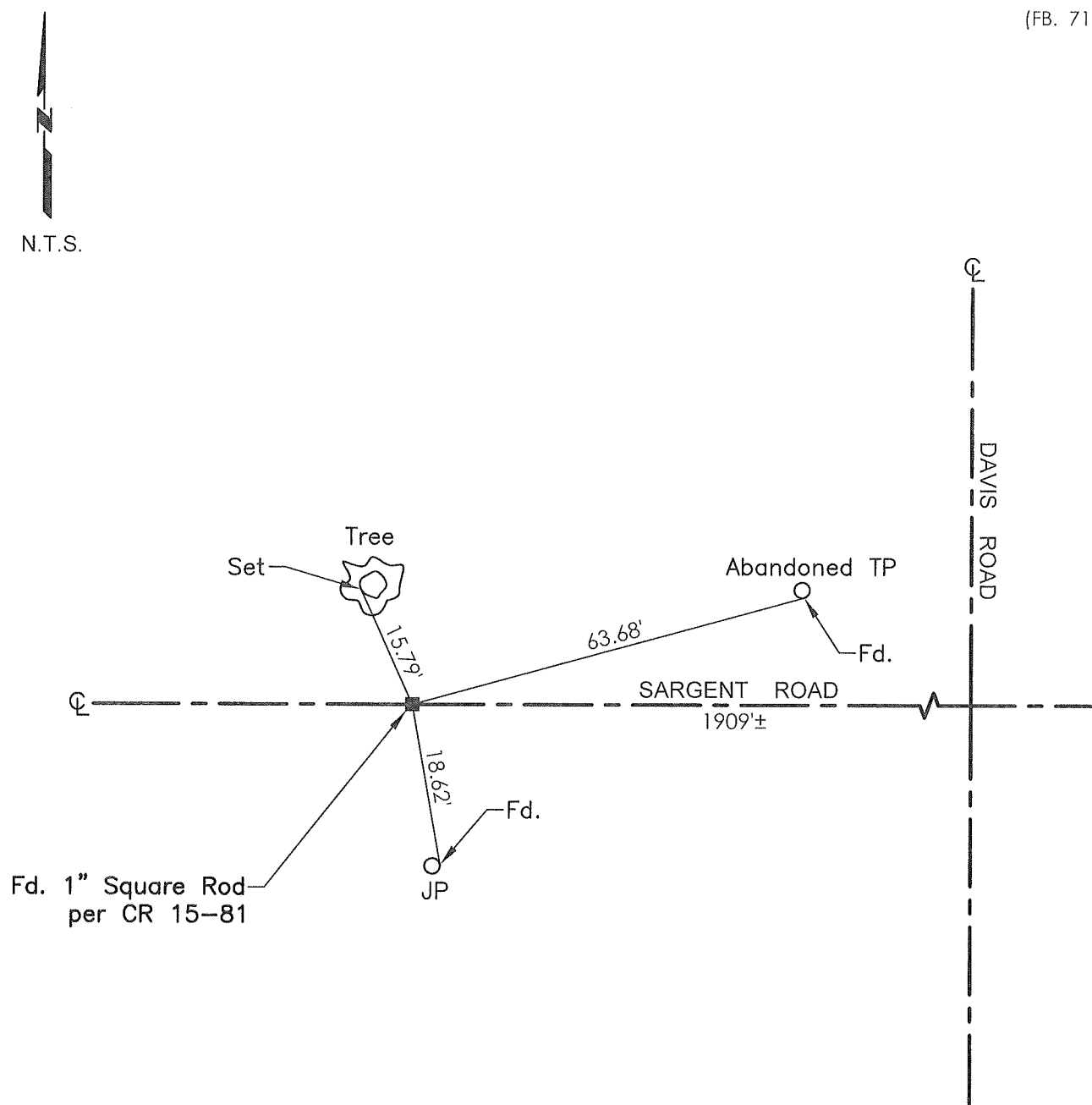
the Professional Land Surveyor's Act on October 10, 2021Signed James E. Hart P.L.S. or R.C.E. No. 8657

COUNTY SURVEYOR'S STATEMENT

This Corner Record was received January 4, 2022and examined and filed January 27, 2022Signed James E. Hart P.L.S. or R.C.E. No. 8657Title County Surveyor

County Surveyor's Comment





TR=Tree
MB=Mailbox
BM=Bench Mark
EP=Edge of Pavement
YL=Yellow Line
FH=Fire Hydrant
CR=Corner Record
FP=Fence Post
JP=Joint Pole
LP=Light Pole
PP=Power Pole
GP=Guy Pole
SP=Service Pole
TP=Telephone Pole
S.F.N.=Searched Found Nothing
N.T.S.=Not To Scale
M&P=Maps & Plats
PM=Parcel Map
RS=Record of Survey
FB=Field Book
N=North
SDI=Storm Drain Inlet
TOC=Top of Curb
PCC=Portland Cement Concrete

Set=Conc. Nail with Brass Washer stamped
 "S.J. Co.", unless otherwise noted
 Fd.=Found Conc. Nail with Brass Washer stamped
 "S.J. Co.", unless otherwise noted
 Note: Found Monuments are not tagged unless
 otherwise noted.

"No attempt was made to verify the Monument(s)"