

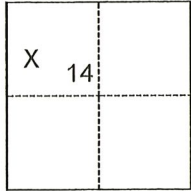
# CORNER RECORD

Agency Index CR-22-074  
Document Number \_\_\_\_\_

City of \_\_\_\_\_ County of San Joaquin, California  
Brief Legal Description APN - 091-290-11

### CORNER TYPE

### COORDINATES (Optional)



- Government Corner
- Meander
- Rancho
- Control
- Property
- Other

N. \_\_\_\_\_ E. \_\_\_\_\_  
 Elevation \_\_\_\_\_  
 Units  Metric  U.S. Survey Foot  
 Horizontal Datum \_\_\_\_\_  
 Zone \_\_\_\_\_ Epoch Date \_\_\_\_\_  
 Vertical Datum \_\_\_\_\_  
 Complies with Public Resources Code §§8801-8819  
 Complies with Public Resources Code §§8890-8902

Date of Survey January 31, 2022

T.2N., R.8E., M.D.B.&M.

PLS Act Ref.:  8765(d)  8771  8773  Other:  
 Corner/Monument:  Left as found  Established  Rebuilt  Pre-Construction  
 Found and tagged  Reestablished  Referenced  Post-Construction

Narrative of corner identified and monument as found, set, reset, replaced, or removed:

See sheet #2 for description(s):

### SURVEYOR'S STATEMENT

This Corner Record was prepared by me or under my direction in conformance with  
 the Professional Land Surveyors' Act on March 3, 2022  
 Signed Joe Murphy (P.L.S.) or R.C.E. No. 7269



### COUNTY SURVEYOR'S STATEMENT

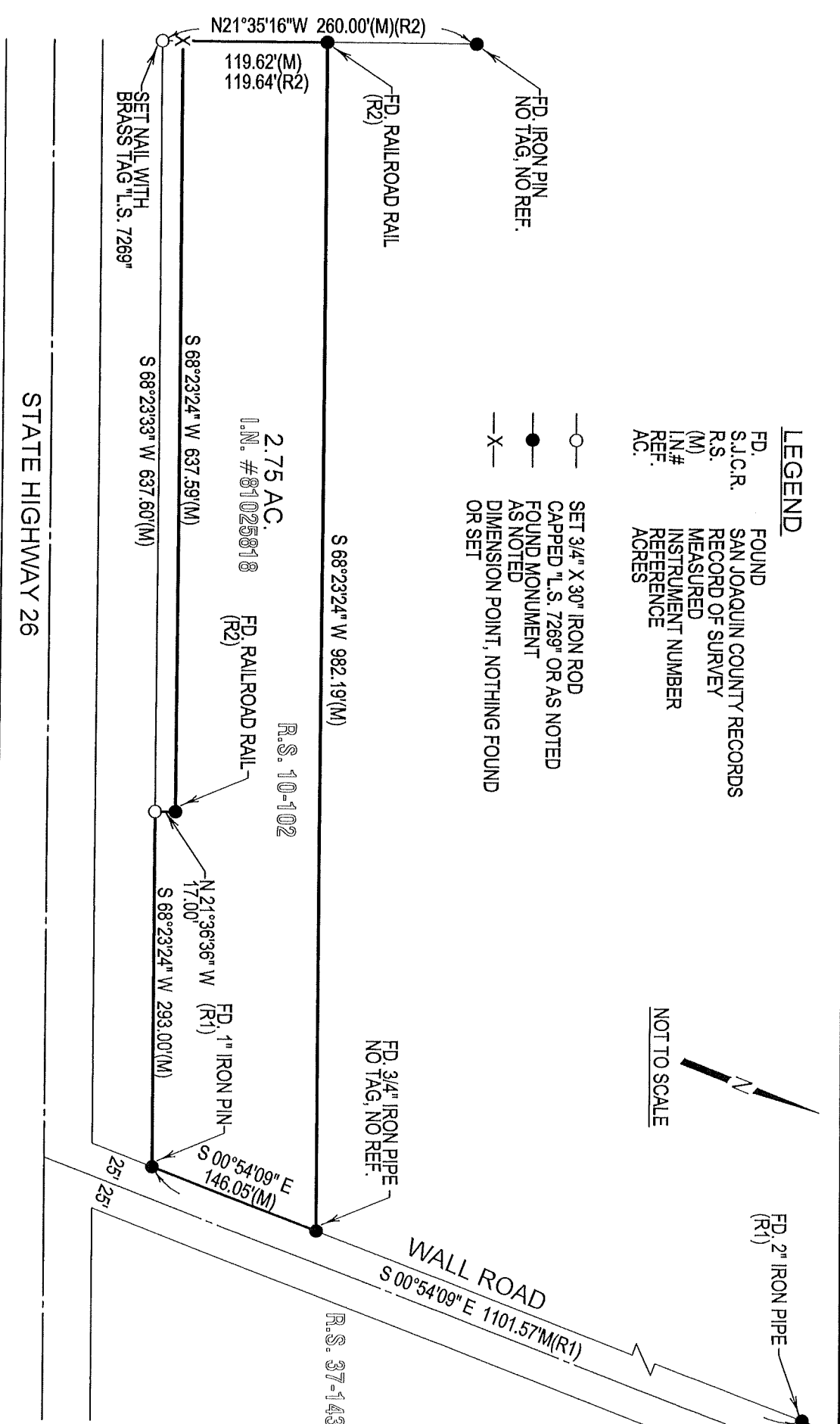
This Corner Record was received March 7, 2022  
 and examined and filed March 24, 2022  
 Signed James E. Hart P.L.S. or R.C.E. No. 8657  
 Title County Surveyor  
 County Surveyor's Comment \_\_\_\_\_



**LEGEND**

FD.	FOUND
S.J.C.R.	SAN JOAQUIN COUNTY RECORDS
R.S.	RECORD OF SURVEY
(M)	MEASURED
I.N.#	INSTRUMENT NUMBER
REF.	REFERENCE
AC.	ACRES

○	SET 3/4" X 30" IRON ROD
●	CAPPED "L.S. 7269" OR AS NOTED
—●—	FOUND MONUMENT
—X—	AS NOTED
	DIMENSION POINT, NOTHING FOUND
	OR SET



**REFERENCES**

(R1)	R.S. 37-143, S.J.C.R.
(R2)	R.S. 10-102, S.J.C.R.