

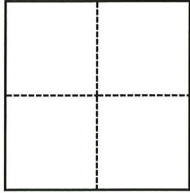
# CORNER RECORD

Agency Index CR-22-072  
Document Number \_\_\_\_\_

City of Stockton County of San Joaquin, California  
Brief Legal Description Arch Airport Road & "B" Street in Section 36 of the C.M. Weber Grant

### CORNER TYPE

### COORDINATES (Optional)



- Government Corner
- Meander
- Rancho
- Control
- Property
- Other

Date of Survey December 2, 2021

N. \_\_\_\_\_ E. \_\_\_\_\_  
 Elevation \_\_\_\_\_  
 Units  Metric  U.S. Survey Foot  
 Horizontal Datum \_\_\_\_\_  
 Zone \_\_\_\_\_ Epoch Date \_\_\_\_\_  
 Vertical Datum \_\_\_\_\_  
 Complies with Public Resources Code §§8801-8819  
 Complies with Public Resources Code §§8890-8902

- PLS Act Ref.:  8765(d)  8771  8773  Other:
- Corner/Monument:  Left as found  Established  Rebuilt  Pre-Construction  
 Found and tagged  Reestablished  Referenced  Post-Construction

Narrative of corner identified and monument as found, set, reset, replaced, or removed:  
 See sheet #2 for description(s):

### SURVEYOR'S STATEMENT

This Corner Record was prepared by me or under my direction in conformance with  
 the Professional Land Surveyors' Act on March 1, 2022  
 Signed Douglas F. Banks P.L.S. or R.C.E. No. 8159



### COUNTY SURVEYOR'S STATEMENT

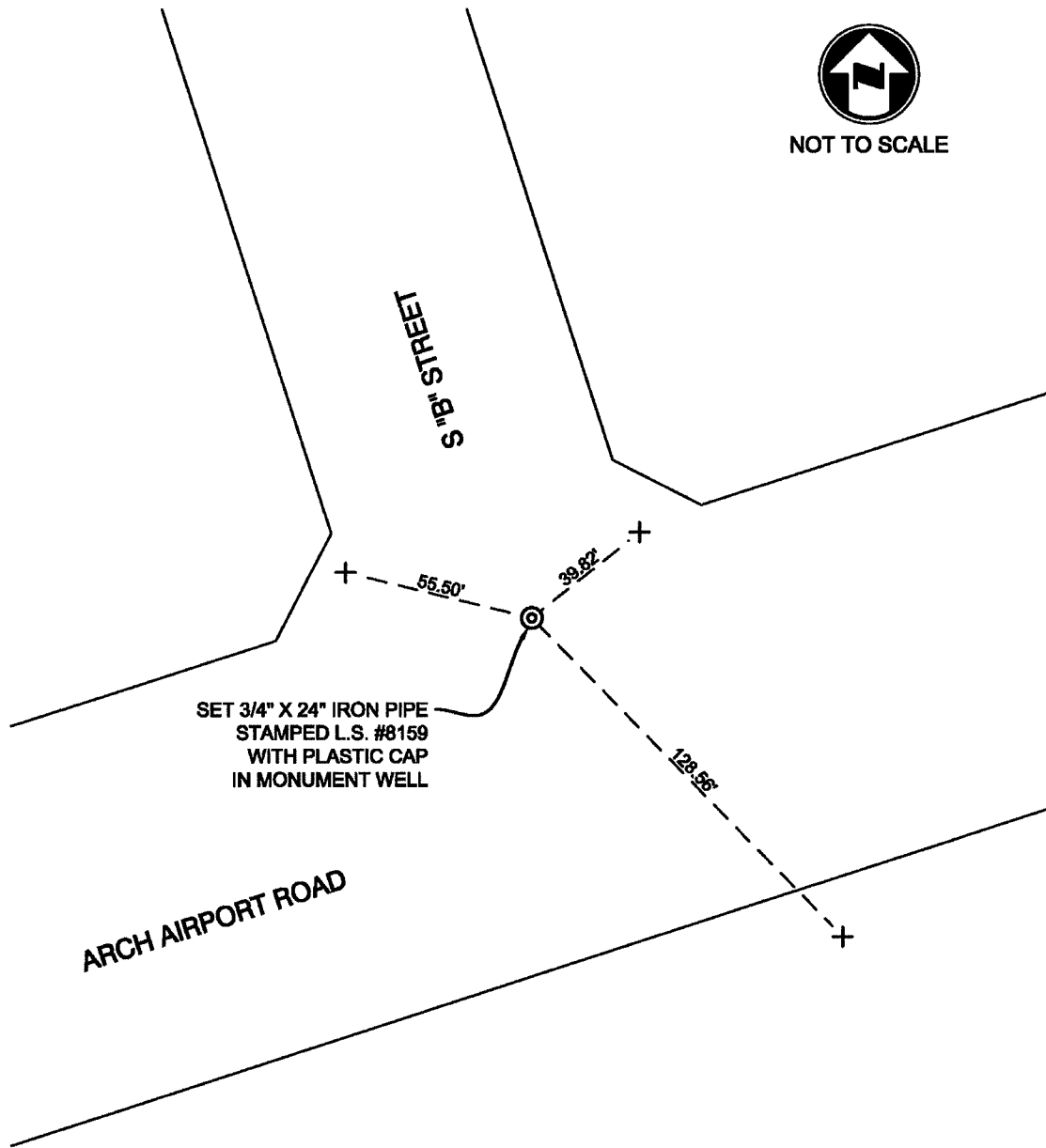
This Corner Record was received March 2, 2022  
 and examined and filed March 17, 2022  
 Signed James E. Hart P.L.S. or R.C.E. No. 8657  
 Title County Surveyor



County Surveyor's Comment



NOT TO SCALE



**NOTES:**

- ⊙ SET MONUMENT AS NOTED.
- + FOUND SAW CUT "+" IN CONCRETE ON TOP OF CURB, PER CORNER RECORD 22-047, UNLESS OTHERWISE NOTED.