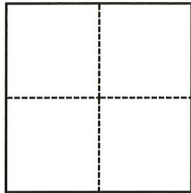


CORNER RECORD

Agency Index CR-22-069

Document Number _____

City of Manteca County of San Joaquin, CaliforniaBrief Legal Description North half (N 1/2) Section 31, T.1S., R.7E., M.D.B. & M.**CORNER TYPE****COORDINATES (Optional)**

- Government Corner Control
 Meander Property
 Rancho Other

N. _____ E. _____

Elevation _____

Units Metric U.S. Survey Foot

Horizontal Datum _____

Zone _____ Epoch Date _____

Vertical Datum _____

 Complies with Public Resources Code §§8801-8819 Complies with Public Resources Code §§8890-8902

PLS Act Ref.:

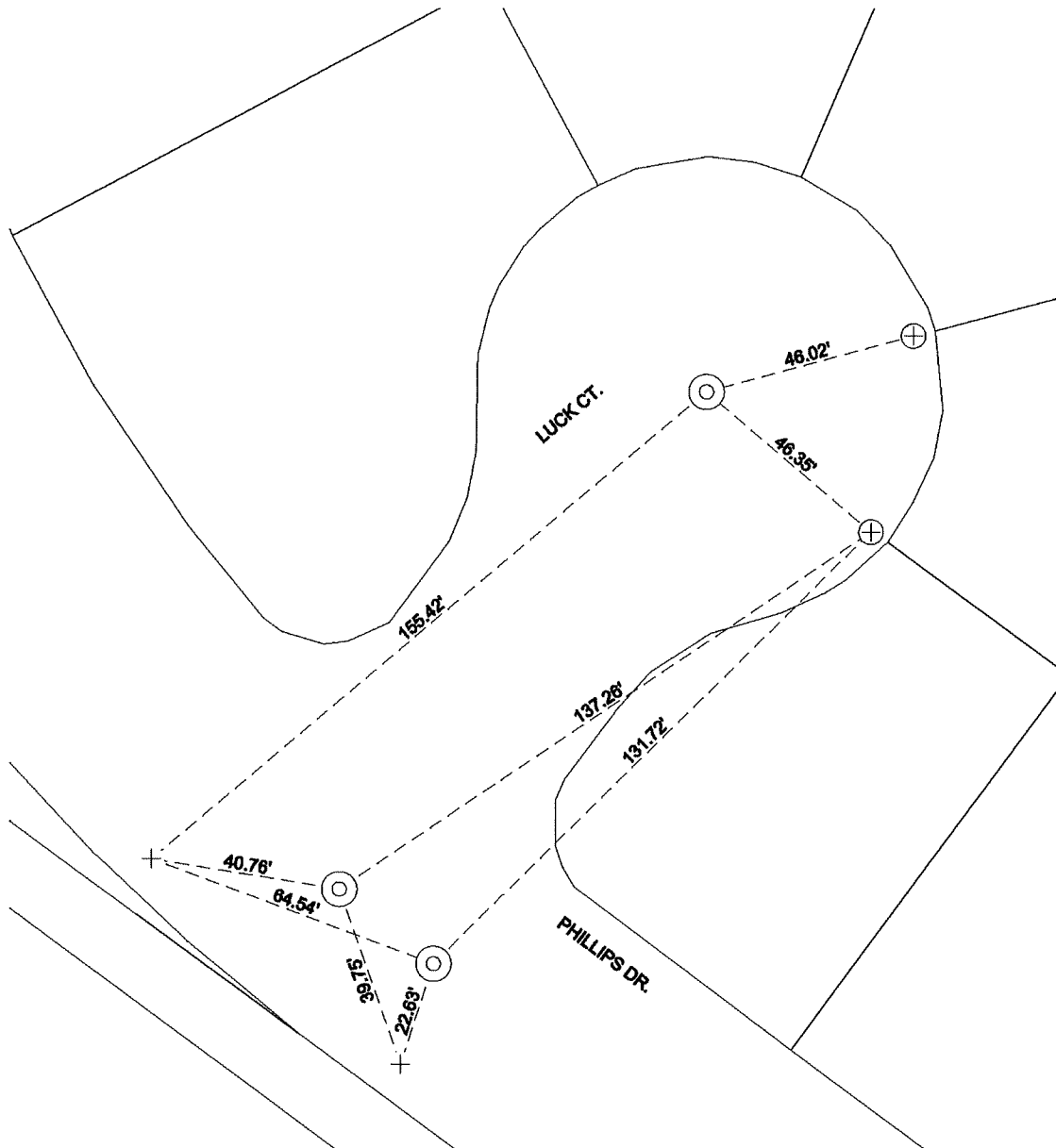
 8765(d) 8771 8773 Other:Corner/
Monument: Left as found Established Rebuilt Pre-Construction Found and tagged Reestablished Referenced Post-Construction

Narrative of corner identified and monument as found, set, reset, replaced, or removed:

 See sheet #2 for description(s):**SURVEYOR'S STATEMENT**

This Corner Record was prepared by me or under my direction in conformance with

the Professional Land Surveyors' Act on January 11, 2022Signed *Douglas F. Banks* P.L.S. or R.C.E. No. 8159**COUNTY SURVEYOR'S STATEMENT**This Corner Record was received February 10, 2022and examined and filed February 24, 2022Signed *James E. Hart* P.L.S. or R.C.E. No. 8657Title County Surveyor**County Surveyor's Comment**



NOTES:

- ⊙ SET MONUMENT: 3/4" X 24" IRON PIPE STAMPED L.S. #8159 WITH PLASTIC CAP IN MONUMENT WELL.
- + FOUND SAWCUT "+" IN CONCRETE ON TOP OF CURB PER CR 21-170
- ⊕ FOUND SAWCUT "+" ON SIDEWALK PER CR 21-170
- CR CORNER RECORD, SAN JOAQUIN COUNTY SURVEYOR'S RECORDS



NOT TO SCALE