

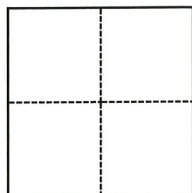
# CORNER RECORD

Agency Index CR-22-067  
Document Number \_\_\_\_\_

City of Manteca County of San Joaquin, California  
Brief Legal Description North half (N 1/2) Section 31, T.1S., R.7E., M.D.B. & M.

## CORNER TYPE

## COORDINATES (Optional)



☐ Government Corner ☐ Control  
☐ Meander ☒ Property  
☐ Rancho ☐ Other

Date of Survey November 19, 2021

N. \_\_\_\_\_ E. \_\_\_\_\_

Elevation \_\_\_\_\_

Units ☐ Metric ☒ U.S. Survey Foot

Horizontal Datum \_\_\_\_\_

Zone \_\_\_\_\_ Epoch Date \_\_\_\_\_

Vertical Datum \_\_\_\_\_

☐ Complies with Public Resources Code §§8801-8819

☐ Complies with Public Resources Code §§8890-8902

PLS Act Ref.:

☐ 8765(d)

☒ 8771

☐ 8773

☐ Other:

Corner/  
Monument:

☐ Left as found

☐ Established

☐ Rebuilt

☐ Pre-Construction

☐ Found and tagged

☒ Reestablished

☒ Referenced

☒ Post-Construction

Narrative of corner identified and monument as found, set, reset, replaced, or removed:

☒ See sheet #2 for description(s):

## SURVEYOR'S STATEMENT

This Corner Record was prepared by me or under my direction in conformance with

the Professional Land Surveyors' Act on January 11, 2022

Signed Douglas F. Banks P.L.S. or R.C.E. No. 8159



## COUNTY SURVEYOR'S STATEMENT

This Corner Record was received February 10, 2022

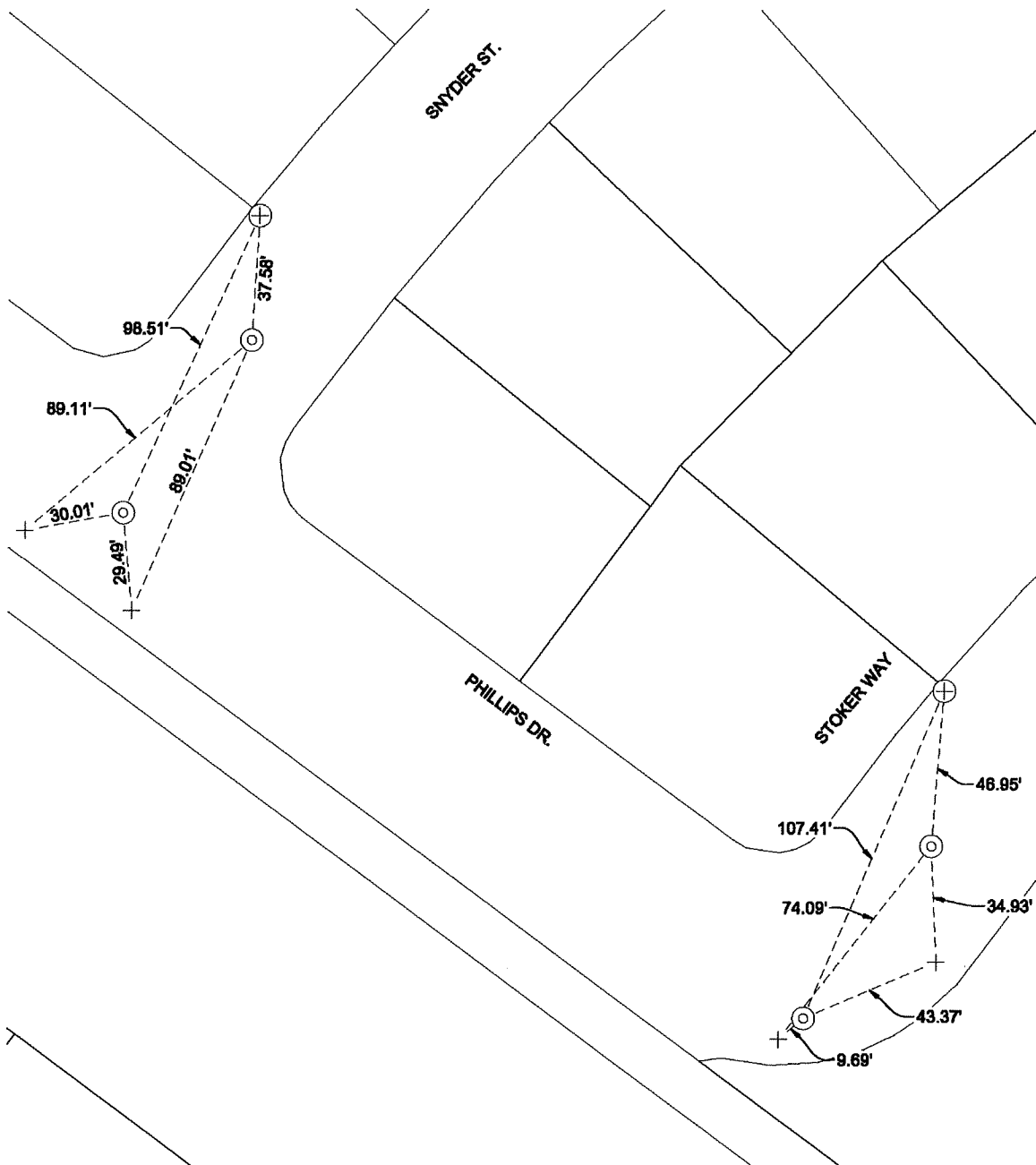
and examined and filed February 24, 2022

Signed James E. Hart P.L.S. or R.C.E. No. 8657

Title County Surveyor

County Surveyor's Comment





## NOTES:

- ⊙ SET MONUMENT: 3/4" X 24" IRON PIPE STAMPED L.S. #8159 WITH PLASTIC CAP IN MONUMENT WELL.
- + FOUND SAWCUT "+" IN CONCRETE ON TOP OF CURB PER CR 21-171
- ⊕ FOUND SAWCUT "+" ON SIDEWALK PER CR 21-171
- CR CORNER RECORD, SAN JOAQUIN COUNTY SURVEYOR'S RECORDS



NOT TO SCALE