

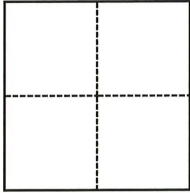
CORNER RECORD

Agency Index CR-22-066
Document Number _____

City of Manteca County of San Joaquin, California
Brief Legal Description North half (N 1/2) Section 31, T.1S., R.7E., M.D.B.& M.

CORNER TYPE

COORDINATES (Optional)



- Government Corner
- Meander
- Rancho
- Control
- Property
- Other

Date of Survey November 19, 2021

N. _____ E. _____
 Elevation _____
 Units Metric U.S. Survey Foot
 Horizontal Datum _____
 Zone _____ Epoch Date _____
 Vertical Datum _____
 Complies with Public Resources Code §§8801-8819
 Complies with Public Resources Code §§8890-8902

- PLS Act Ref.: 8765(d) 8771 8773 Other:
- Corner/
Monument: Left as found Established Rebuilt Pre-Construction
 Found and tagged Reestablished Referenced Post-Construction

Narrative of corner identified and monument as found, set, reset, replaced, or removed:
 See sheet #2 for description(s):

SURVEYOR'S STATEMENT

This Corner Record was prepared by me or under my direction in conformance with
 the Professional Land Surveyors' Act on January 11, 2022
 Signed Douglas F. Banks P.L.S. or R.C.E. No. 8159

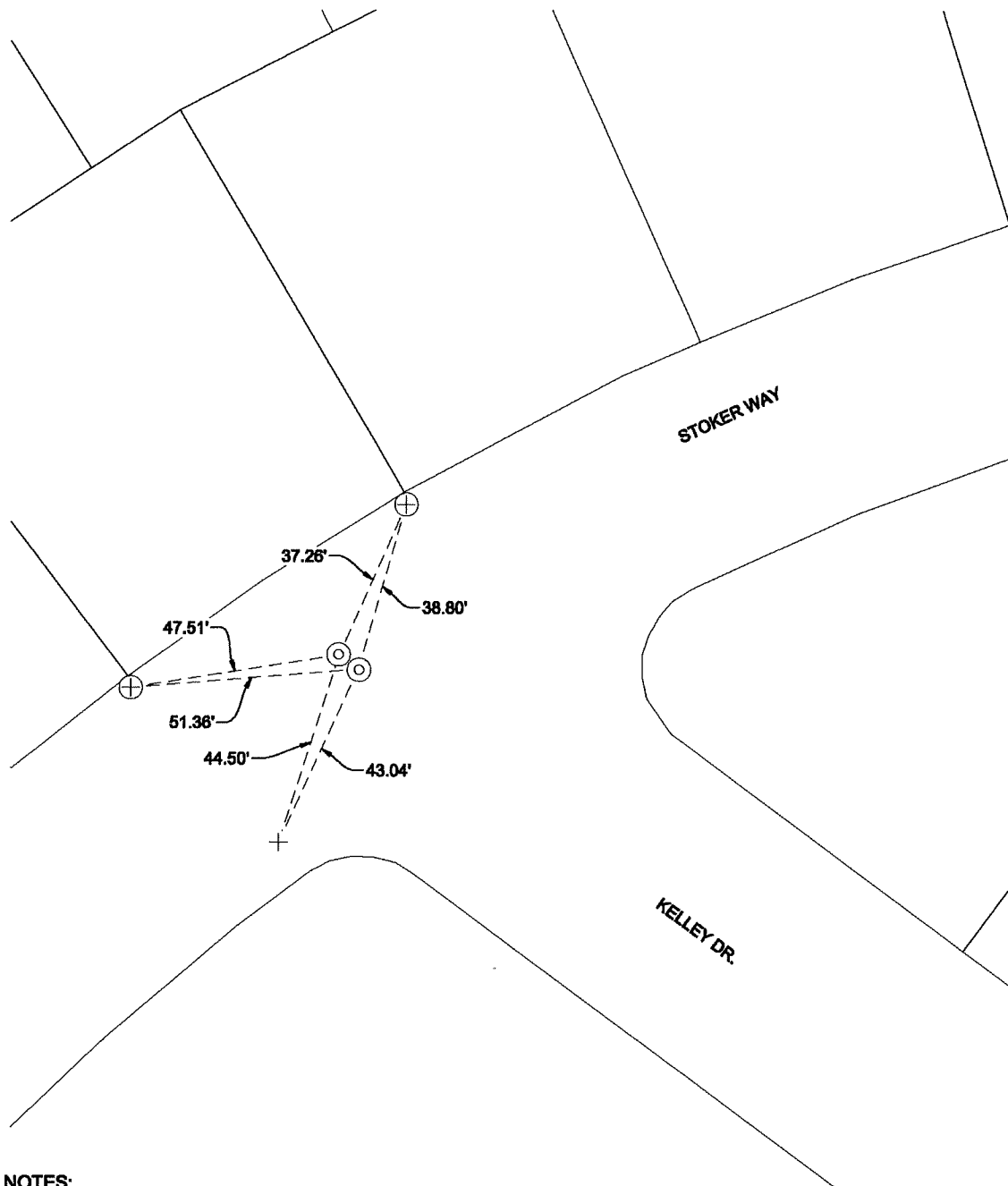


COUNTY SURVEYOR'S STATEMENT

This Corner Record was received February 10, 2022
 and examined and filed February 24, 2022
 Signed James E. Hart P.L.S. or R.C.E. No. 8657
 Title County Surveyor



County Surveyor's Comment



NOTES:

- ⊙ SET MONUMENT: 3/4" X 24" IRON PIPE STAMPED L.S. #8159 WITH PLASTIC CAP IN MONUMENT WELL.
- + FOUND SAWCUT "+" IN CONCRETE ON TOP OF CURB PER CR 21-172
- ⊕ FOUND SAWCUT "+" ON SIDEWALK PER CR 21-172
- CR CORNER RECORD, SAN JOAQUIN COUNTY SURVEYOR'S RECORDS



NOT TO SCALE