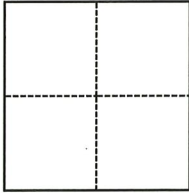


CORNER RECORD

Agency Index CR-22-062

Document Number _____

City of Manteca County of San Joaquin, CaliforniaBrief Legal Description North half (N 1/2) Section 31, T.1S., R.7E., M.D.B.& M.**CORNER TYPE****COORDINATES (Optional)**

- Government Corner Control
 Meander Property
 Rancho Other

Date of Survey November 19, 2021

N. _____ E. _____

Elevation _____

Units Metric U.S. Survey Foot

Horizontal Datum _____

Zone _____ Epoch Date _____

Vertical Datum _____

 Complies with Public Resources Code §§8801-8819 Complies with Public Resources Code §§8890-8902

PLS Act Ref.:

 8765(d) 8771 8773 Other:Corner/
Monument: Left as found Established Rebuilt Pre-Construction Found and tagged Reestablished Referenced Post-Construction

Narrative of corner identified and monument as found, set, reset, replaced, or removed:

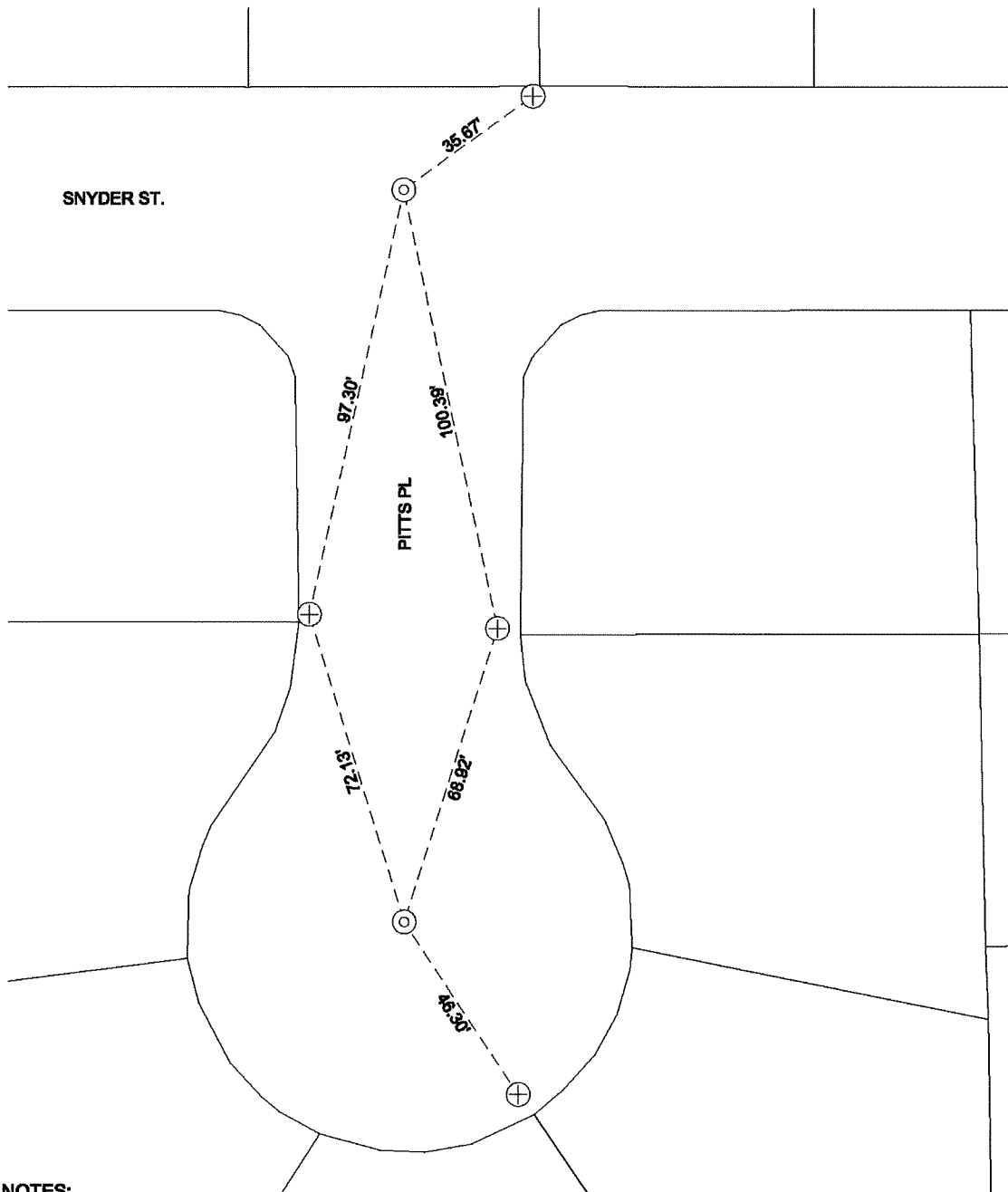
 See sheet #2 for description(s):**SURVEYOR'S STATEMENT**

This Corner Record was prepared by me or under my direction in conformance with

the Professional Land Surveyors' Act on January 11, 2022.Signed Douglas F. Banks P.L.S. or R.C.E. No. 8159**COUNTY SURVEYOR'S STATEMENT**This Corner Record was received February 10, 2022and examined and filed February 24, 2022.Signed James E. Hart P.L.S. or R.C.E. No. 8657Title County Surveyor

County Surveyor's Comment _____





NOTES:

- ⊙ SET MONUMENT: 3/4" X 24" IRON PIPE STAMPED L.S. #8159 WITH PLASTIC CAP IN MONUMENT WELL.
- + FOUND SAWCUT "+" IN CONCRETE ON TOP OF CURB PER CR 21-176
- ⊕ FOUND SAWCUT "+" ON SIDEWALK PER CR 21-176
- CR CORNER RECORD, SAN JOAQUIN COUNTY SURVEYOR'S RECORDS



NOT TO SCALE