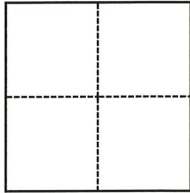


# CORNER RECORD

Agency Index

CR-22-056

Document Number

City of Manteca County of San Joaquin, CaliforniaBrief Legal Description North half (N 1/2) Section 31, T.1S., R.7E., M.D.B. & M.**CORNER TYPE****COORDINATES (Optional)**

- ☐ Government Corner ☐ Control  
☐ Meander ☒ Property  
☐ Rancho ☐ Other

Date of Survey November 19, 2021

N. \_\_\_\_\_ E. \_\_\_\_\_

Elevation \_\_\_\_\_

Units ☐ Metric ☒ U.S. Survey Foot

Horizontal Datum \_\_\_\_\_

Zone \_\_\_\_\_ Epoch Date \_\_\_\_\_

Vertical Datum \_\_\_\_\_

☐ Complies with Public Resources Code §§8801-8819☐ Complies with Public Resources Code §§8890-8902

PLS Act Ref.:

☐ 8765(d)☒ 8771☐ 8773☐ Other:Corner/  
Monument:☐ Left as found☐ Established☐ Rebuilt☐ Pre-Construction☐ Found and tagged☒ Reestablished☒ Referenced☒ Post-Construction

Narrative of corner identified and monument as found, set, reset, replaced, or removed:

☒ See sheet #2 for description(s):**SURVEYOR'S STATEMENT**

This Corner Record was prepared by me or under my direction in conformance with

the Professional Land Surveyors' Act on January 11, 2022

Signed

Douglas F. Banks

P.L.S. or R.C.E. No.

8159**COUNTY SURVEYOR'S STATEMENT**

This Corner Record was received

February 10, 2022

and examined and filed

February 24, 2022

Signed

James E. Hart

P.L.S. or R.C.E. No.

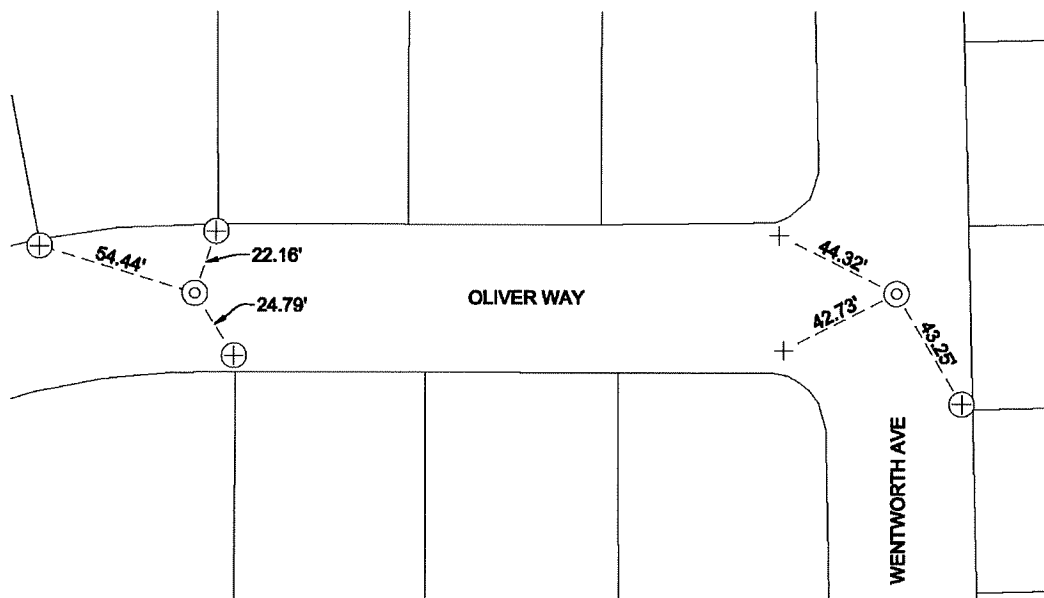
8657

Title

County Surveyor

County Surveyor's Comment



**NOTES:**

- ⊙ SET MONUMENT: 3/4" X 24" IRON PIPE STAMPED L.S. #8159 WITH PLASTIC CAP IN MONUMENT WELL.
- + FOUND SAWCUT "+" IN CONCRETE ON TOP OF CURB PER CR 21-183
- ⊕ FOUND SAWCUT "+" ON SIDEWALK PER CR 21-183
- CR CORNER RECORD, SAN JOAQUIN COUNTY SURVEYOR'S RECORDS

**NOT TO SCALE**