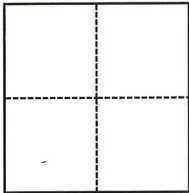


CORNER RECORD

Agency Index CR-22-051
Document Number _____

City of Manteca County of San Joaquin, California
Brief Legal Description North half (N 1/2) Section 31, T.1S., R.7E., M.D.B. & M.

CORNER TYPE



☐ Government Corner ☐ Control
☐ Meander ☒ Property
☐ Rancho ☐ Other

Date of Survey November 19, 2021

COORDINATES (Optional)

N. _____ E. _____

Elevation _____

Units ☐ Metric ☒ U.S. Survey Foot

Horizontal Datum _____

Zone _____ Epoch Date _____

Vertical Datum _____

☐ Complies with Public Resources Code §§8801-8819

☐ Complies with Public Resources Code §§8890-8902

PLS Act Ref.:

☐ 8765(d)

☒ 8771

☐ 8773

☐ Other:

Corner/
Monument:

☐ Left as found

☐ Established

☐ Rebuilt

☐ Pre-Construction

☐ Found and tagged

☒ Reestablished

☒ Referenced

☒ Post-Construction

Narrative of corner identified and monument as found, set, reset, replaced, or removed:

☒ See sheet #2 for description(s):

SURVEYOR'S STATEMENT

This Corner Record was prepared by me or under my direction in conformance with

the Professional Land Surveyors' Act on January 11, 2022

Signed Douglas F. Banks P.L.S. or R.C.E. No. 8159



COUNTY SURVEYOR'S STATEMENT

This Corner Record was received February 10, 2022

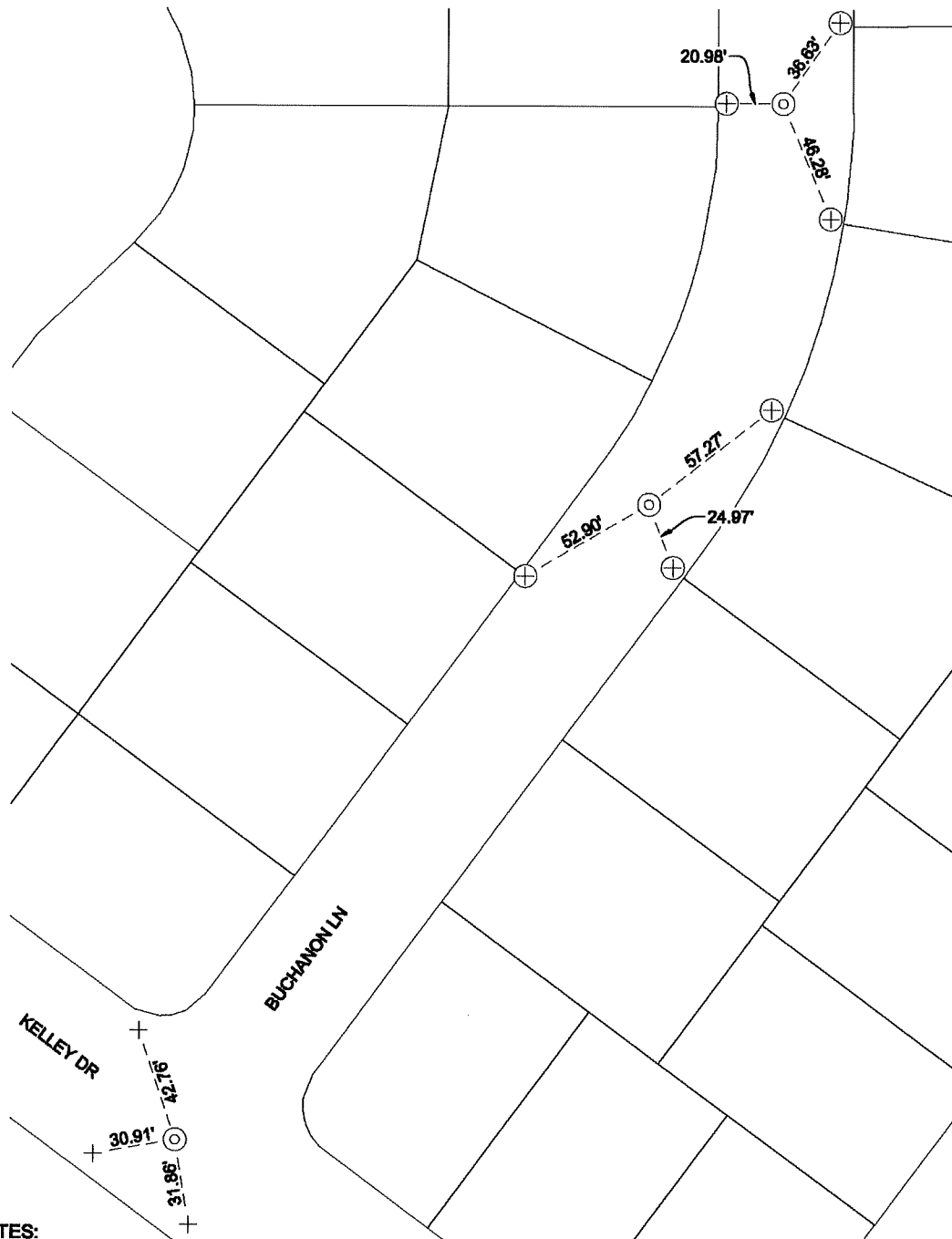
and examined and filed February 24, 2022

Signed James E. Hart P.L.S. or R.C.E. No. 8657

Title County Surveyor

County Surveyor's Comment





NOTES:

- ⊙ SET MONUMENT: 3/4" X 24" IRON PIPE STAMPED L.S. #8159 WITH PLASTIC CAP IN MONUMENT WELL.
- + FOUND SAWCUT "+" IN CONCRETE ON TOP OF CURB PER CR 21-188
- ⊕ FOUND SAWCUT "+" ON SIDEWALK PER CR 21-188
- CR CORNER RECORD, SAN JOAQUIN COUNTY SURVEYOR'S RECORDS



NOT TO SCALE