

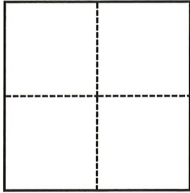
CORNER RECORD

Agency Index CR-22-049
Document Number _____

City of Stockton County of San Joaquin, California
Brief Legal Description Arch Airport Road & So. Airport Way in Section 36 of the C.M. Weber Grant

CORNER TYPE

COORDINATES (Optional)



- Government Corner
- Meander
- Rancho
- Control
- Property
- Other

Date of Survey October 4, 2021

N. _____ E. _____
 Elevation _____
 Units Metric U.S. Survey Foot
 Horizontal Datum _____
 Zone _____ Epoch Date _____
 Vertical Datum _____
 Complies with Public Resources Code §§8801-8819
 Complies with Public Resources Code §§8890-8902

- PLS Act Ref.: 8765(d) 8771 8773 Other:
- Corner/Monument: Left as found Established Rebuilt Pre-Construction
 Found and tagged Reestablished Referenced Post-Construction

Narrative of corner identified and monument as found, set, reset, replaced, or removed:
 See sheet #2 for description(s):

SURVEYOR'S STATEMENT

This Corner Record was prepared by me or under my direction in conformance with
 the Professional Land Surveyors' Act on January 5, 2022
 Signed Douglas F. Banks P.L.S. or R.C.E. No. 8159

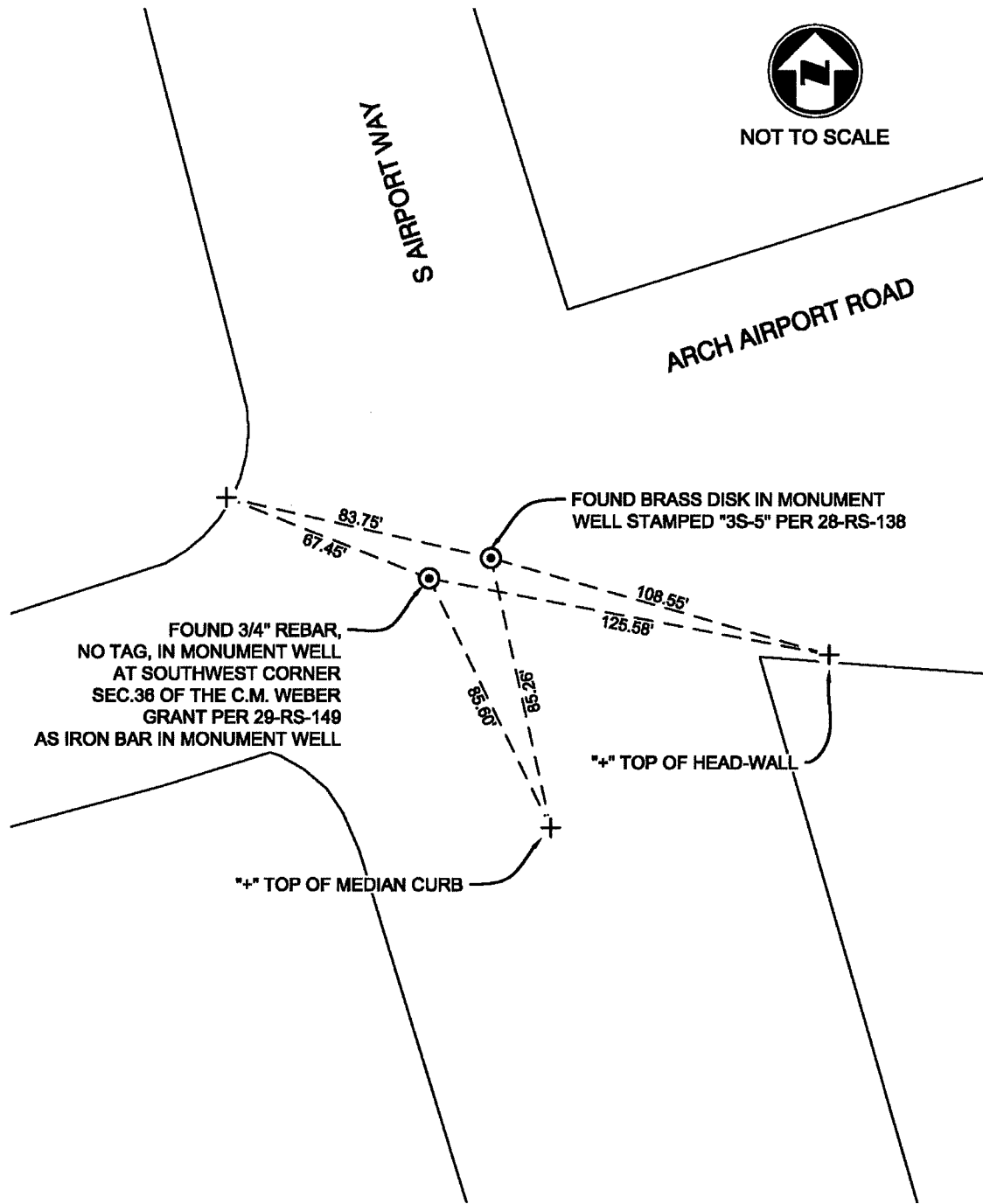


COUNTY SURVEYOR'S STATEMENT

This Corner Record was received February 10, 2022
 and examined and filed February 24, 2022
 Signed James E. Hart P.L.S. or R.C.E. No. 8657
 Title County Surveyor



County Surveyor's Comment



NOTES:

- ⊙ FOUND MONUMENT AS NOTED.
- + SET SAW CUT "+" IN CONCRETE ON TOP OF CURB, UNLESS OTHERWISE NOTED.
- RS- BOOK, PAGE, RECORD OF SURVEY, SAN JOAQUIN COUNTY RECORDS