

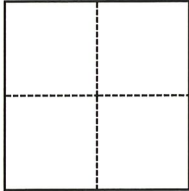
# CORNER RECORD

Agency Index CR-22-048  
Document Number \_\_\_\_\_

City of Stockton County of San Joaquin, California  
Brief Legal Description Arch Airport Road & Alitalia Avenue in Section 36 of the C.M. Weber Grant

### CORNER TYPE

### COORDINATES (Optional)



- Government Corner
- Meander
- Rancho
- Control
- Property
- Other

Date of Survey October 4, 2021

N. \_\_\_\_\_ E. \_\_\_\_\_  
 Elevation \_\_\_\_\_  
 Units  Metric  U.S. Survey Foot  
 Horizontal Datum \_\_\_\_\_  
 Zone \_\_\_\_\_ Epoch Date \_\_\_\_\_  
 Vertical Datum \_\_\_\_\_  
 Complies with Public Resources Code §§8801-8819  
 Complies with Public Resources Code §§8890-8902

- PLS Act Ref.:  8765(d)  8771  8773  Other:
- Corner/Monument:  Left as found  Established  Rebuilt  Pre-Construction  
 Found and tagged  Reestablished  Referenced  Post-Construction

Narrative of corner identified and monument as found, set, reset, replaced, or removed:  
 See sheet #2 for description(s):

### SURVEYOR'S STATEMENT

This Corner Record was prepared by me or under my direction in conformance with  
 the Professional Land Surveyors' Act on January 5, 2022  
 Signed Douglas F. Banks P.L.S. or R.C.E. No. 8159



### COUNTY SURVEYOR'S STATEMENT

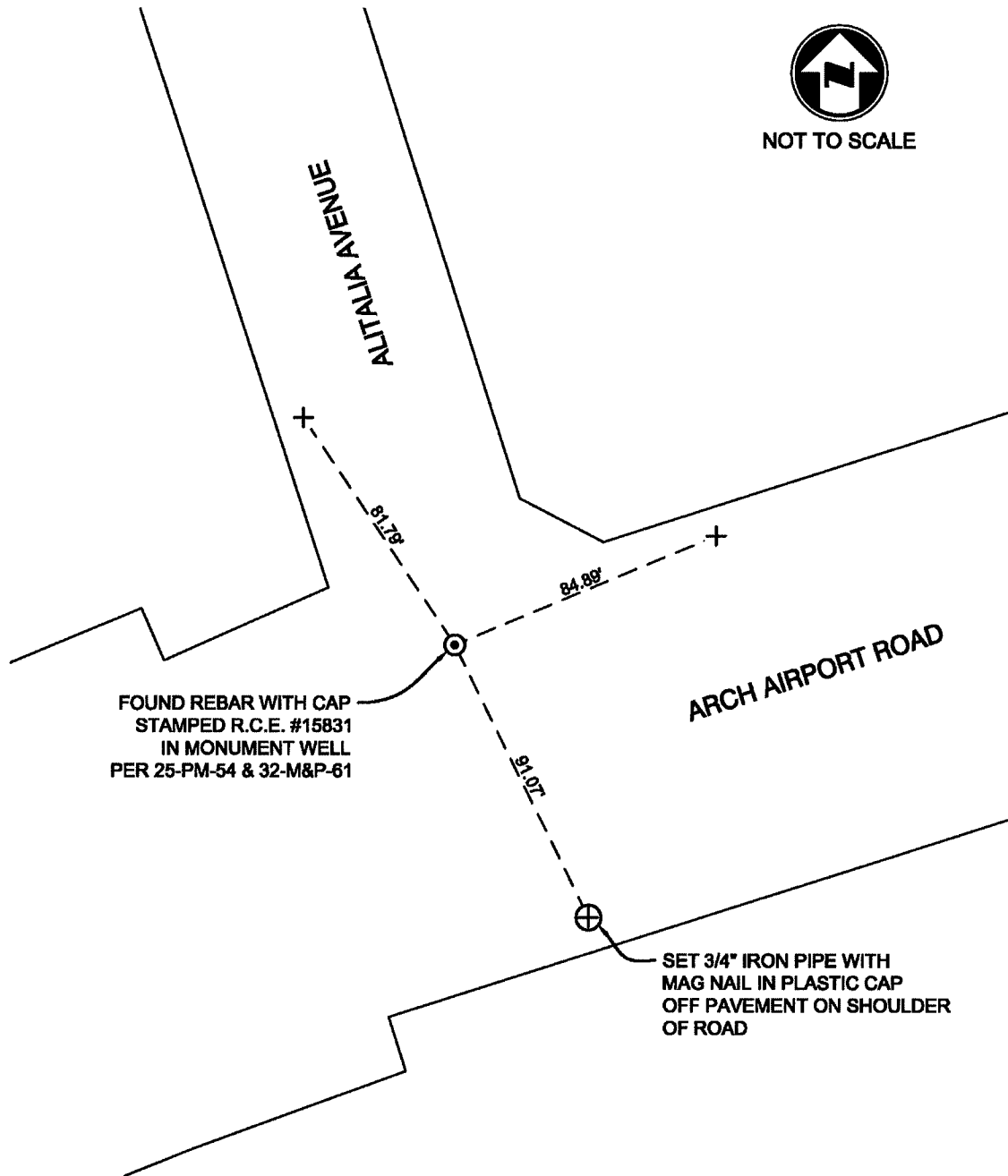
This Corner Record was received February 10, 2022  
 and examined and filed February 24, 2022  
 Signed James E. Hart P.L.S. or R.C.E. No. 8657  
 Title County Surveyor



County Surveyor's Comment



NOT TO SCALE



FOUND REBAR WITH CAP  
 STAMPED R.C.E. #15831  
 IN MONUMENT WELL  
 PER 25-PM-54 & 32-M&P-61

SET 3/4" IRON PIPE WITH  
 MAG NAIL IN PLASTIC CAP  
 OFF PAVEMENT ON SHOULDER  
 OF ROAD

**NOTES:**

- ⊙ FOUND MONUMENT AS NOTED.
- + SET SAW CUT "+" IN CONCRETE ON TOP OF CURB, UNLESS OTHERWISE NOTED.
- PM- BOOK, PAGE, PARCEL MAPS, SAN JOAQUIN COUNTY RECORDS
- M&P- BOOK, PAGE, MAPS AND PLATS, SAN JOAQUIN COUNTY RECORDS