

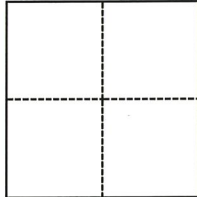
# CORNER RECORD

Agency Index CR-22-039  
Document Number \_\_\_\_\_

City of Stockton County of San Joaquin, California  
Brief Legal Description Found monument as noted, referenced and left as found.

### CORNER TYPE

### COORDINATES (Optional)



- Government Corner
- Meander
- Rancho
- Control
- Property
- Other

Date of Survey September 12, 2020

N. \_\_\_\_\_ E. \_\_\_\_\_  
 Elevation \_\_\_\_\_  
 Units  Metric  U.S. Survey Foot  
 Horizontal Datum \_\_\_\_\_  
 Zone \_\_\_\_\_ Epoch Date \_\_\_\_\_  
 Vertical Datum \_\_\_\_\_  
 Complies with Public Resources Code §§8801-8819  
 Complies with Public Resources Code §§8890-8902

- PLS Act Ref.:  8765(d)  8771  8773  Other:  
 Corner/Monument:  Left as found  Established  Rebuilt  Pre-Construction  
 Found and tagged  Reestablished  Referenced  Post-Construction

Narrative of corner identified and monument as found, set, reset, replaced, or removed:

See sheet #2 for description(s):

Found a cut cross in the northerly concrete sidewalk of Miner Ave, approximately 150' west of Hunter St. Set four (4) reference points, as noted on the reverse, outside of the construction limits.

### SURVEYOR'S STATEMENT

This Corner Record was prepared by me or under my direction in conformance with

the Professional Land Surveyors' Act on January 31, 2022

Signed James N. Landrum P.L.S. or R.C.E. No. 5837



### COUNTY SURVEYOR'S STATEMENT

This Corner Record was received February 1, 2022

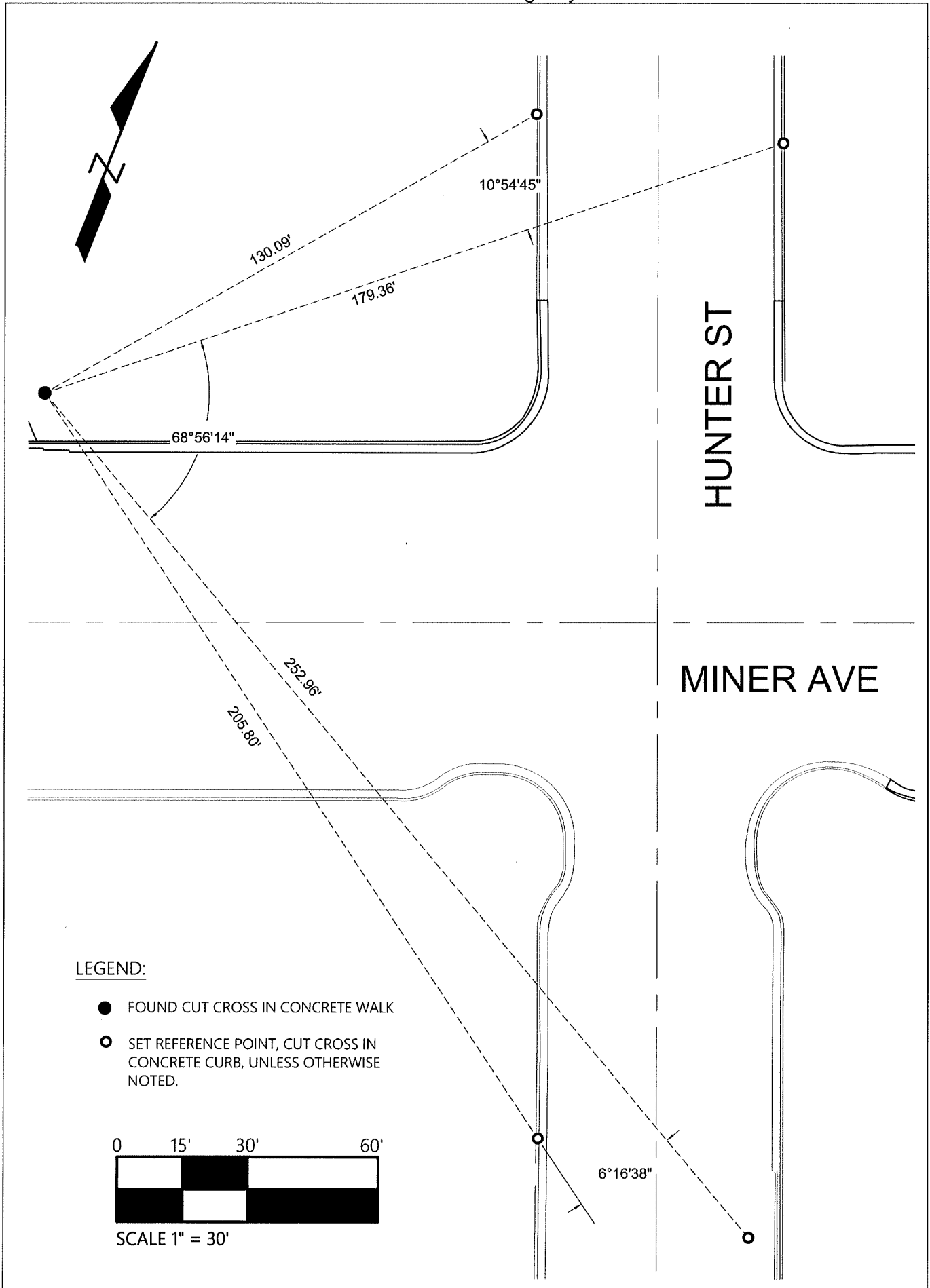
and examined and filed February 14, 2022

Signed James E. Hart P.L.S. or R.C.E. No. 8657

Title County Surveyor

County Surveyor's Comment





**LEGEND:**

- FOUND CUT CROSS IN CONCRETE WALK
- SET REFERENCE POINT, CUT CROSS IN CONCRETE CURB, UNLESS OTHERWISE NOTED.

